

4024Z05

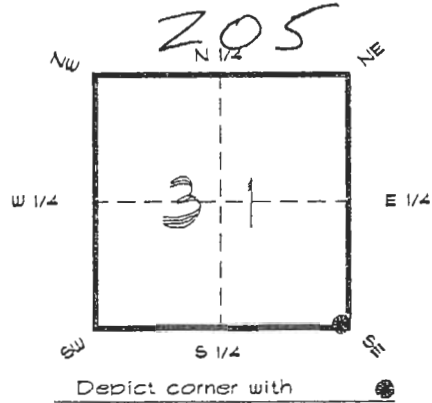
DOC. #

051085

**FLORIDA DEPARTMENT OF ENVIRONMENTAL PROTECTION**  
**CERTIFIED CORNER RECORD**

CORNER DESCRIPTION:

S. E. corner of Section 31,  
Twp 40 S., Rge 24 E.,  
Tallahassee Base Meridian,  
CHARLOTTE County(s), Florida.



MONUMENTATION DESCRIPTION:

Describe original monument and accessories, or subsequent restoration. Give sources of information. (If no attempt was made to search for the original monument and accessories, this information is not necessary.)

Description of corner evidence found:

80d NAIL ON SURFACE

State method(s) to determine corner location (lost corners only):

**RECORDED**  
**JAN 31 1995**  
**SURVEY & MAPPING**

HORIZONTAL POSITION INFORMATION (if determined):

Latitude 26°56'48.51767" N Longitude 81°56'24.84079" W  
Y(Northing) 289512.235 m X(Easting) 205934.552 m Zone FLW  
Convergence 0°01'37.502" Scale factor 0.99994161

Coordinate determination (circle one): Field traverse GPS

Horizontal datum (circle one): NAD27 NAD83(1986) NAD83(1990) other (explain)

Order of accuracy as defined in Standards and Specifications for Geodetic Control Networks published by the Federal Geodetic Control Committee (circle one):  
1st, 2nd, 3rd class

or Minimum Technical Standards (Chapter 6IG17, F.A.C.) ratio of closure for field data (example 1:10,000), \_\_\_\_\_ . This does not specify an order of accuracy.

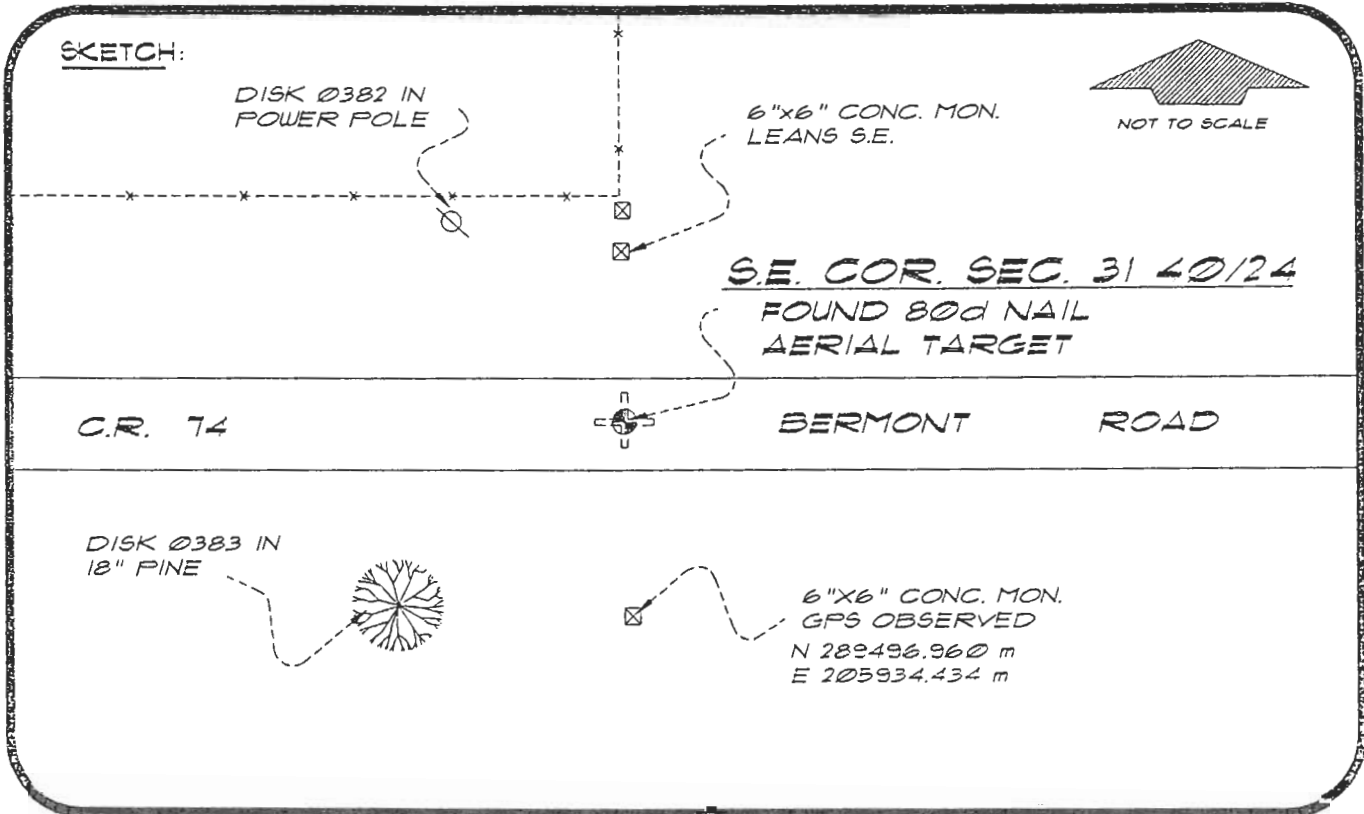
Control point(s) used for survey: CHARLOTTE COUNTY HORIZONTAL CONTROL NETWORK INCLUDES HAYOLINE 2, PLACIDA 2, W260, PUNTPORT, & FLGPS 58 AS B ORDER STATIONS.

Comments:

051085

4024Z05

DOC. #



BASIS OF BEARING SOLAR OBSERVATION REFER: FB 304/43

REFERENCE MEASUREMENTS

Description	Bearing	Distance
DISK 0383 IN 18" PINE	S 46°04'14" W	54.77'
DISK 0382 IN P. POLE	N 28°17'50" W	62.54'
6"X6" CONC. MON. LEANING	N 00°51'15" E	48.56'
6"X6" CONC. MON. (GPS OBSERVED)	S 00°28'14" W (S. 00°28'14" W GRID)	50.12'

SURVEYORS CERTIFICATE: I certify the monument and accessories indicated above were field located on FEBRUARY 16, 1994

*R. P. Ros*

PLS 4260

UPDATED JAN. 11, 1995

SIGNATURE

1/30/95

DATE

CHARLOTTE COUNTY SURVEY DEPT.

FIRM OR AGENCY

1000 FLORIDA STREET

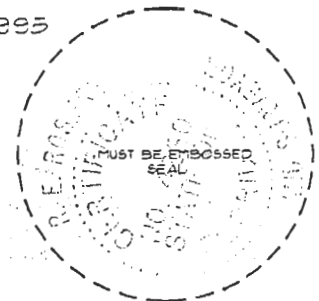
ADDRESS

FUNTA GORDA, FLORIDA 33950

CITY

STATE

508



Completeness checked by: *B. Linton*  
 Accepted and filed: *3-1-95* Date  
 S.L.M. - I.D. *00313200* DNR USE ONLY

SEND TO:

Department of Environmental Protection  
Bureau of Survey and Mapping  
3900 Commonwealth Boulevard  
Mail Station 105  
Tallahassee, Florida 32309