

4024Z21

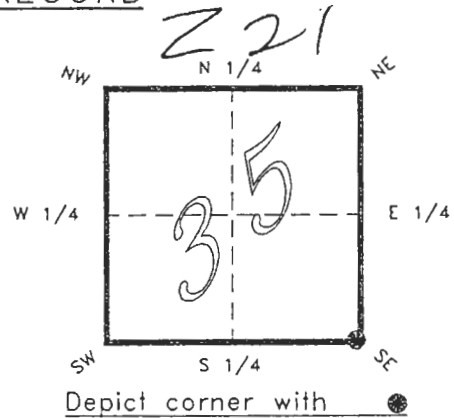
DOC. #

051089

FLORIDA DEPARTMENT OF ENVIRONMENTAL PROTECTION  
CERTIFIED CORNER RECORD

CORNER DESCRIPTION:

S.E. corner of Section 35 ,  
Twp 40 S. , Rge 24 E. ,  
Tallahassee Base Meridian,  
CHARLOTTE County(s), Florida.



MONUMENTATION DESCRIPTION:

Describe original monument and accessories, or subsequent restoration. Give sources of information. (If no attempt was made to search for the original monument and accessories, this information is not necessary.)

Description of corner evidence found:

*SET CAPPED IRON ROD L.S. 2776 ON LINE EXTENDED BY RECORD R.O.W. WIDTH*

State method(s) to determine corner location (lost corners only):

*RECEIVED*  
**JAN 31 1995**  
SURVEY & MAPPING

HORIZONTAL POSITION INFORMATION ( if determined ):

Latitude 26°56'47.42359" N Longitude 81°52'31.46657" W  
Y(Northing) 289483.256 m X(Easting) 212371.551 m Zone FLW  
Convergence 0°03'23.257" Scale factor 0.99994307

Coordinate determination (circle one): Field traverse GPS

Horizontal datum (circle one): NAD27 NAD83(1986) NAD83(1990) other (explain)

Order of accuracy as defined in "Standards and Specifications for Geodetic Control Networks" published by the Federal Geodetic Control Committee (circle one):  
1st, 2nd, 3rd, class 1 ,

or Minimum Technical Standards (Chapter 21HH-6, F.A.C.) ratio of closure for field data (example 1:10,000), \_\_\_\_\_ . This does not specify an order of accuracy.

Control point(s) used for survey: *CHARLOTTE COUNTY HORIZONTAL CONTROL NETWORK INCLUDES HAVOLINE 2, PLACIDA 2, W260, PUNTPORT, & FLGPS 58 AS B ORDER STATIONS.*

Comments:

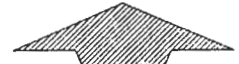
4024Z21

DOC. #

051089

SKETCH:

FD. TAPPED OCTAGONAL  
3" CONC. MONUMENT  
AT E. 1/4 CORNER



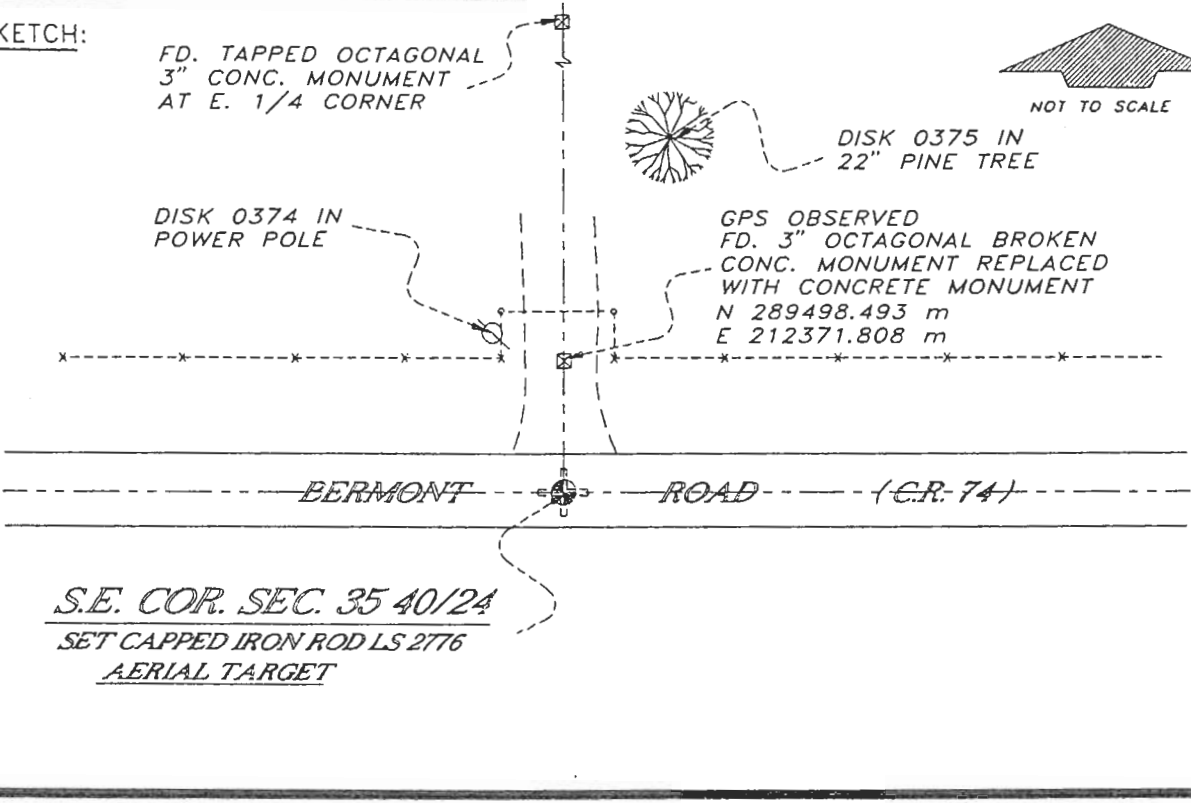
NOT TO SCALE



DISK 0375 IN  
22" PINE TREE

DISK 0374 IN  
POWER POLE

GPS OBSERVED  
FD. 3" OCTAGONAL BROKEN  
CONC. MONUMENT REPLACED  
WITH CONCRETE MONUMENT  
N 289498.493 m  
E 212371.808 m



S.E. COR. SEC. 35 40/24  
SET CAPPED IRON ROD LS 2776  
AERIAL TARGET

BASIS OF BEARING SOLAR OBSERVATION

REFER: FB 304/39

REFERENCE MEASUREMENTS

<u>Description</u>	<u>Bearing</u>	<u>Distance</u>
DISK 0374 IN P. POLE	N 10°36'21" W	62.61'
DISK 0375 IN 22" PINE	N 09°21'50" E	142.12'
E. 1/4 COR. SEC. 35	N 01°01'24" E	2637.35'
REPLACED CONC. MON.	N 01°01'24" E	50.00'
	( N 00°58'01" E GRID )	

SURVEYORS CERTIFICATE: I certify the monument and accessories indicated above were field located on FEBRUARY 14, 1994.

*R. Rose*  
SIGNATURE

PLS 4260

UPDATED JAN. 11, 1995

1/30/95  
DATE

CHARLOTTE COUNTY SURVEY DEPT.  
FIRM OR AGENCY

7000 FLORIDA STREET  
ADDRESS

PUNTA GORDA, FLA. 33950  
CITY STATE

508



Completeness checked by: *B. Hunter*

Accepted and filed: 3-1-95 Date

B.L.M. - I.D. 02359601 D.N.R. USE ONLY

SEND TO:

Department of Environmental Protection  
Bureau of Survey and Mapping  
3900 Commonwealth Boulevard  
Mail Station 105  
Tallahassee, Florida 32399