

4025A19

DOC. #

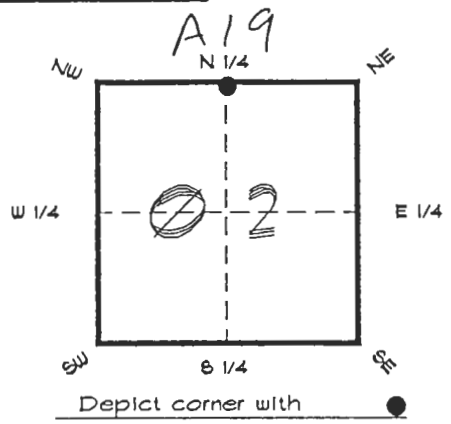
059847

**FLORIDA DEPARTMENT OF ENVIRONMENTAL PROTECTION  
CERTIFIED CORNER RECORD**

CORNER DESCRIPTION:

N. 1/4 corner of Section 2 ,  
Twp 40 S. , Rge 25 E. ,  
Tallahassee Base Meridian,

CHARLOTTE County(s), Florida.  
DESOTO



MONUMENTATION DESCRIPTION:

Describe original monument and accessories, or subsequent restoration. Give sources of information. (If no attempt was made to search for the original monument and accessories, this information is not necessary.)

Description of corner evidence found:

*1" AXEL SHAFT AS SHOWN IN CRAVEN'S FIELD NOTES  
IN 1928*

State method(s) to determine corner location (lost corners only):

HORIZONTAL POSITION INFORMATION ( if determined ):

Latitude 27°02'02.27465" N Longitude 81°47'05.24662" W

Y(Northing) 299185.528 m X(Easting) 221352.925 m Zone FLW

Convergence 0°05'52.141" Scale factor 0.99994680

Coordinate determination (circle one): Field traverse GPS

Horizontal datum (circle one): NAD27 NAD83(1986) NAD83(1990) other (explain)

Order of accuracy as defined in Standards and Specifications for Geodetic Control Networks published by the Federal Geodetic Control Committee (circle one):  
1st, 2nd, 3rd class 1 ,

or Minimum Technical Standards (Chapter 61G17, F.A.C.) ratio of closure for field data (example 1:10,000), \_\_\_\_\_ . This does not specify an order of accuracy.

Control point(s) used for survey: CHARLOTTE COUNTY HORIZONTAL CONTROL NETWORK INCLUDES HAYOLINE 2, PLACIDA 2, W260, FUNTPORT, & FLGPS 58 AS B ORDER STATIONS.

Comments:

**RECEIVED**  
JUN 30 2004

**SURVEY & MAPPING**

059847

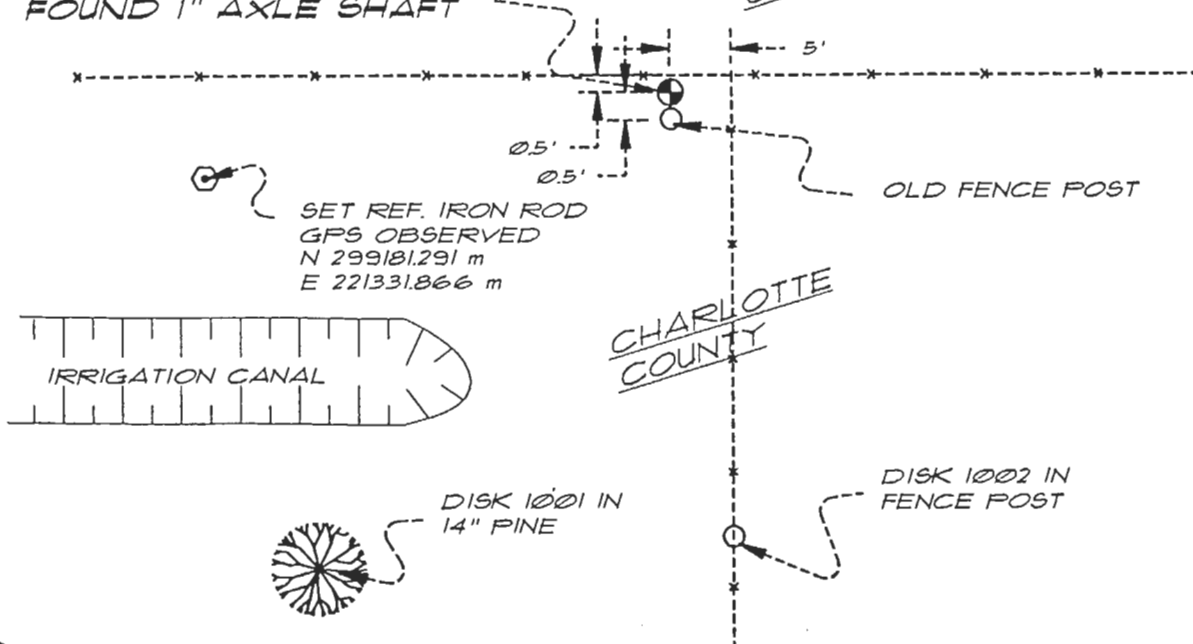
4025A19

DOC. #

SKETCH:

N. 1/4 COR. SEC. 2 40/25  
FOUND 1" AXLE SHAFT

DESOTO  
COUNTY



BASIS OF BEARING SOLAR OBSERVATION REFER: FB 307/17

REFERENCE MEASUREMENTS

Description	Bearing	Distance
DISK 1001 14" PINE	S 30°36'50" W	113.04'
DISK 1002 IN FENCE POST	S 04°39'05" E	90.46'
SET REF. IRON ROD	S 78°43'24" W	70.48'

SURVEYORS CERTIFICATE: I certify the monument and accessories indicated above were field located on AUGUST 2, 1994

*R. Rose*  
SIGNATURE

PLS 4260

AUGUST 14, 1996  
DATE

CHARLOTTE COUNTY SURVEY DEPT.  
FIRM OR AGENCY

7000 FLORIDA STREET  
ADDRESS

PUNTA GORDA, FLORIDA 33950  
CITY STATE

545  
ARCADIA, SE



Completeness checked by: *[Signature]*

Accepted and filed: 7-1-97 Date

BLM. - I.D. 02CL0035 D.E.P. USE ONLY

02CL0000

SEND TO:

Department of Environmental Protection  
Bureau of Survey and Mapping  
3900 Commonwealth Boulevard  
Mail Station 105  
Tallahassee, Florida 32399