

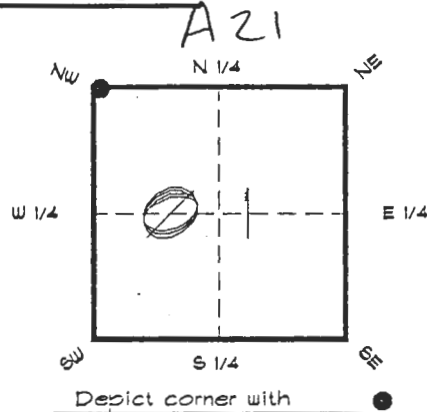
4025A21

FLORIDA DEPARTMENT OF ENVIRONMENTAL PROTECTION
CERTIFIED CORNER RECORD

CORNER DESCRIPTION:

N. W. corner of Section 1,
Twp 40 S., Rge 25 E.,
Tallahassee Base Meridian,

CHARLOTTE County(s), Florida.
DESOTO



MONUMENTATION DESCRIPTION:

Describe original monument and accessories, or subsequent restoration. Give sources of information. (If no attempt was made to search for the original monument and accessories, this information is not necessary.)

Description of corner evidence found:

3"x3" CONCRETE MONUMENT 1.0' BELOW SURFACE

State method(s) to determine corner location (lost corners only):

HORIZONTAL POSITION INFORMATION (if determined):

Latitude 27°02'02.15676" N Longitude 81°46'35.89890" W

Y(Northing) 299183.307 m X(Easting) 222161.784 m Zone FLW

Convergence 0°06'05.480" scale factor 0.99994724

Coordinate determination (circle one): Field traverse (GPS)

Horizontal datum (circle one): NAD27 NAD83(1986) (NAD83(1990)) other (explain)

Order of accuracy as defined in Standards and Specifications for Geodetic Control Networks published by the Federal Geodetic Control Committee (circle one):
1st, (2nd), 3rd, class 1

or Minimum Technical Standards (Chapter 6IG17, F.A.C.) ratio of closure for field data (example 1:10,000), . This does not specify an order of accuracy.

Control point(s) used for survey: CHARLOTTE COUNTY HORIZONTAL CONTROL NETWORK INCLUDES HAVOLINE 2, FLACIDA 2, W260, PUNTPORT, & FLGPS 58 AS B ORDER STATIONS.

Comments:

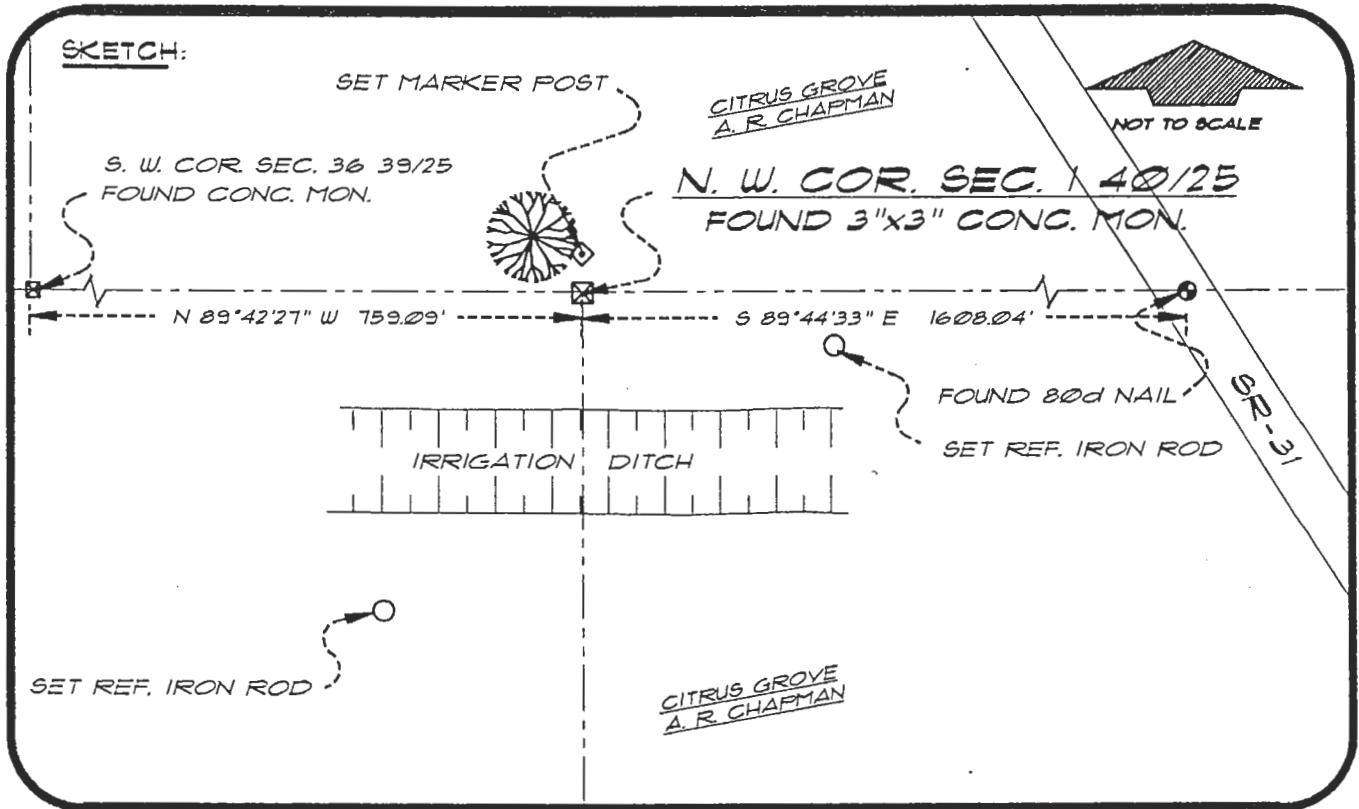
RECEIVED

MAR 21 1996

4025A21

DOC. #

055747



BASIS OF BEARING SOLAR OBSERVATION REFER: FB 307/16

REFERENCE MEASUREMENTS

<u>Description</u>	<u>Bearing</u>	<u>Distance</u>
SET REF. IRON ROD	S 30°18'10" W	100.06'
SET REF. IRON ROD	S 84°27'42" E	72.33'
SET MARKER POST	N'LY	3.0'

SURVEYORS CERTIFICATE: I certify the monument and accessories indicated above were field located on AUGUST 1, 1994

R. Rose
SIGNATURE

PLS 4260

MARCH 11, 1996

DATE

CHARLOTTE COUNTY SURVEY DEPT.

FIRM OR AGENCY

7000 FLORIDA STREET

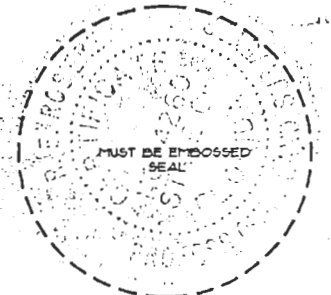
ADDRESS

PUNTA GORDA, FLORIDA 33950

CITY

STATE

545
ARCADIA
SE



SEND TO:

Department of Environmental Protection
Bureau of Survey and Mapping
3900 Commonwealth Boulevard
Mail Station 105
Tallahassee, Florida 32399

Completeness checked by: *B. Hout*

Accepted and filed: *4-1-96*

BLM. - ID. 02000001

Date

D.E.P. USE ONLY