

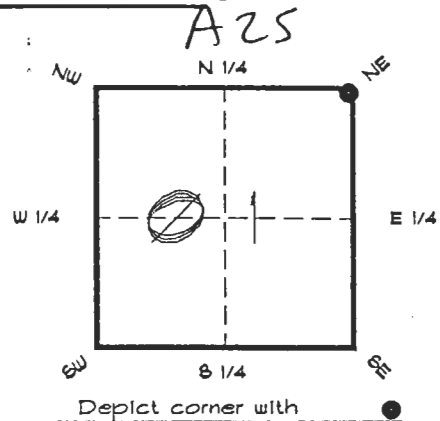
4025A25, 1/1/95

**FLORIDA DEPARTMENT OF ENVIRONMENTAL PROTECTION
CERTIFIED CORNER RECORD**

CORNER DESCRIPTION:

N. E. corner of Section 1,
Twp 40 S., Rge 23 E.
Tallahassee Base Meridian,

CHARLOTTE County(s), Florida.
DESOTO



MONUMENTATION DESCRIPTION:

Describe original monument and accessories, or subsequent restoration. Give sources of information. (If no attempt was made to search for the original monument and accessories, this information is not necessary.)

Description of corner evidence found:

OLD WAGON SPINDLE, REPLACED WITH CONCRETE MONUMENT.

State method(s) to determine corner location (lost corners only):

HORIZONTAL POSITION INFORMATION (if determined):

Latitude 27°02'01.91952" N Longitude 81°45'36.62477" W
Y(Northing) 299179.006 m X(Easting) 223795.454 m Zone FLW
Convergence 0°06'32.421" Scale factor 0.99994816

Coordinate determination (circle one): Field traverse GPS

Horizontal datum (circle one): NAD27 NAD83(1986) NAD83(1990) other (explain)

Order of accuracy as defined in Standards and Specifications for Geodetic Control Networks published by the Federal Geodetic Control Committee (circle one):

1st, 2nd, 3rd, class 1

or Minimum Technical Standards (Chapter 6G17, F.A.C.) ratio of closure for field data: (example 1:10000), _____ . This does not specify an order of accuracy.

Control point(s) used for survey: CHARLOTTE COUNTY HORIZONTAL CONTROL NETWORK INCLUDES HAYOLINE 2, FLACIDA 2, W260, PUNTPORT, 4 FLGPS 58 49 B ORDER STATIONS.

Comments:

RECORDED

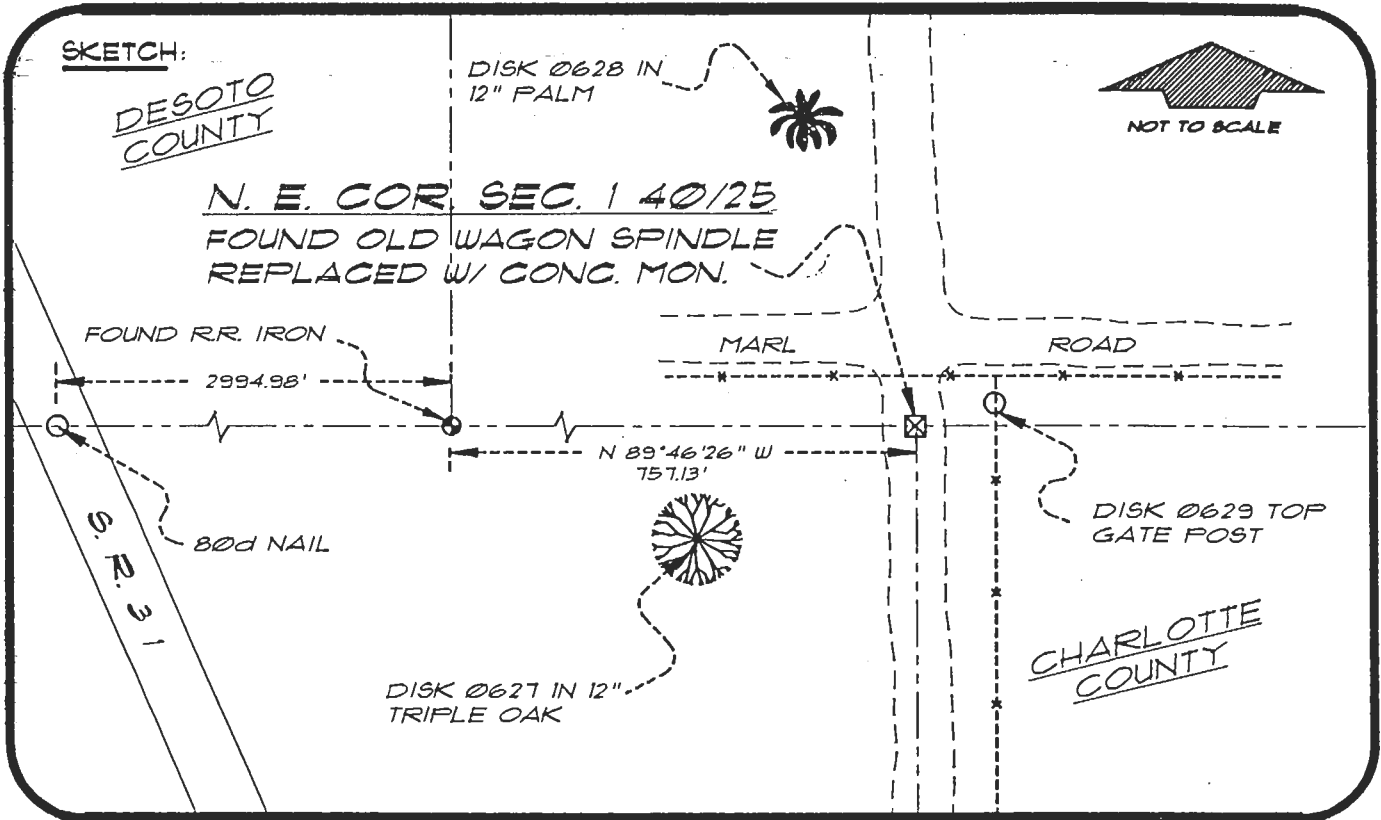
MAR 21 1995

SURVEY & MAPPING

4025A25

DOC. #

055745



BASIS OF BEARING SOLAR OBSERVATION
SET SURVEY MARKER POST 10.0' E'LY

REFER: FB 307/05

REFERENCE MEASUREMENTS

Description	Bearing	Distance
DISK 0627 IN 12" OAK	S 55°09'34" W	102.98'
DISK 0629 TOP GATE POST	N 65°30'24" E	27.41'
DISK 0628 IN 12" PALM	N 07°57'21" W	159.60'

SURVEYORS CERTIFICATE: I certify the monument and accessories indicated above
were field located on JUNE 30, 1994.

R. Rose

SIGNATURE

FLS 4260

MARCH 12, 1996

DATE

CHARLOTTE COUNTY SURVEY DEPT.

FIRM OR AGENCY

7000 FLORIDA STREET

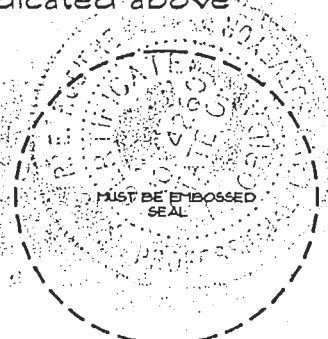
ADDRESS

PUNTA GORDA, FLORIDA 33950

CITY

STATE

546
Fr.
06/06/94



Completeness checked by: *B. Hunt*

Accepted and filed: *4-11-96*

BLM. - ID. 0136306 Date

D.E.P. USE ONLY

SEND TO:

Department of Environmental Protection
Bureau of Survey and Mapping
3900 Commonwealth Boulevard
Mail Station 105
Tallahassee, Florida 32399