

4025E05

DOC. #

056805

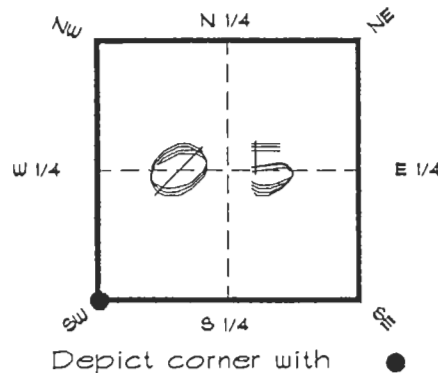
FLORIDA DEPARTMENT OF ENVIRONMENTAL PROTECTION  
CERTIFIED CORNER RECORD

E05

CORNER DESCRIPTION:

S. W. corner of Section 5,  
Twp 40 S., Rge 25 E.,  
Tallahassee Base Meridian,

CHARLOTTE County(s), Florida.



MONUMENTATION DESCRIPTION:

Describe original monument and accessories, or subsequent restoration. Give sources of information. (If no attempt was made to search for the original monument and accessories, this information is not necessary.)

Description of corner evidence found:

SET 4"x4" C.C.S.D. CONCRETE MONUMENT BY DOUBLE PROPORTION

State method(s) to determine corner location (lost corners only):

HORIZONTAL POSITION INFORMATION ( if determined ):

Latitude 27°01'11.56234" N Longitude 81°50'33.31605" W

Y(Northing) 297616.273 m X(Easting) 215620.276 m Zone FLW.

Convergence 0°04'17.445" Scale factor 0.99994419

Coordinate determination (circle one): Field traverse GPS

Horizontal datum (circle one): NAD27 NAD83(1986) NAD83(1990) other (explain)

Order of accuracy as defined in "Standards and Specifications for Geodetic Control Networks" published by the Federal Geodetic Control Committee (circle one): 1st, 2nd, 3rd class 1

or Minimum Technical Standards (Chapter 21HH-6, F.A.C.) ratio of closure for field data (example 1:10,000), This does not specify an order of accuracy.

Control point(s) used for survey: CHARLOTTE COUNTY HORIZONTAL CONTROL NETWORK INCLUDES HAVOLINE 2, PLACIDA 2, W260, PUNTPORT, 4 FLGPS 58 AS B ORDER STATIONS.

Comments:

RECEIVED

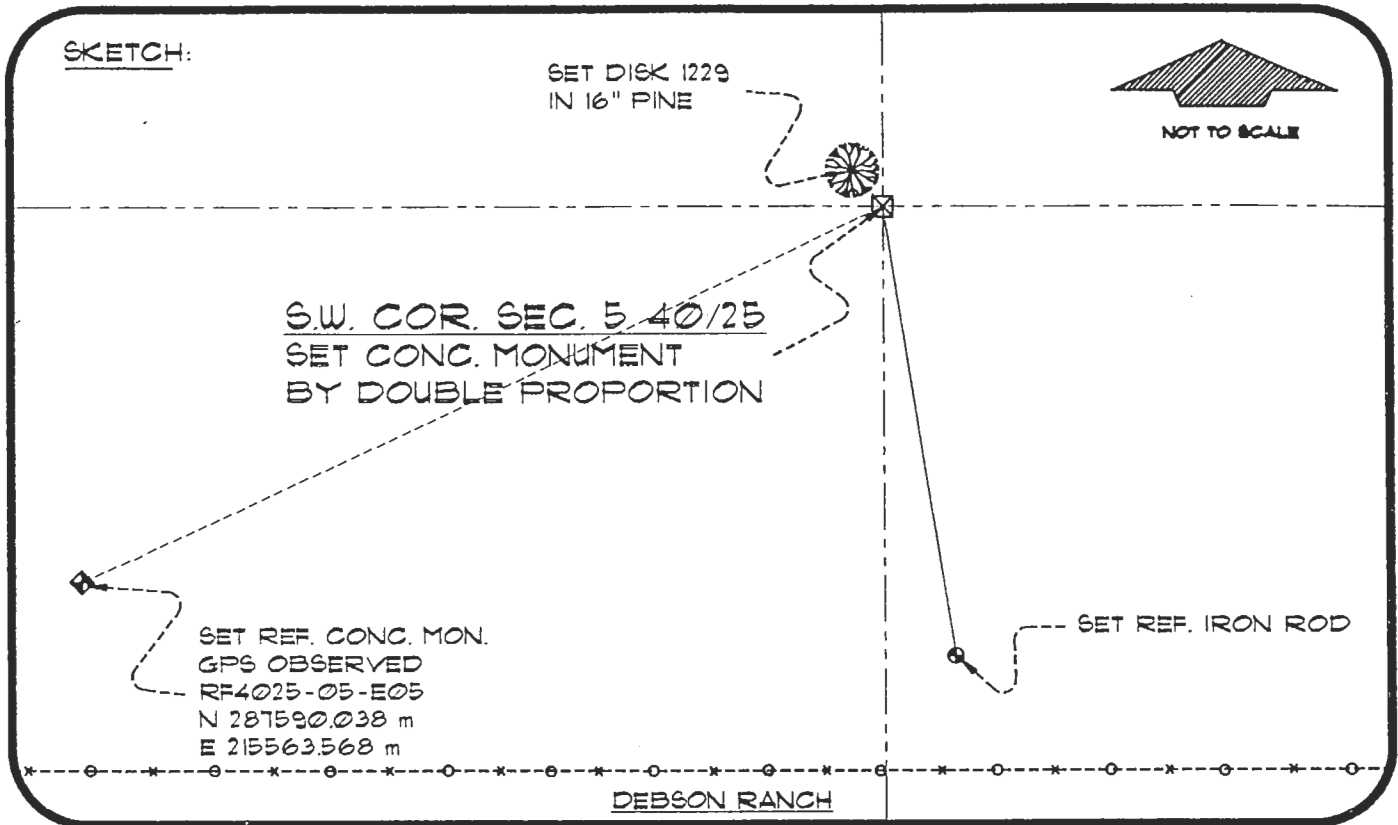
JUL 9 1995

SURVEY #

4025E05

DOC. #

056805



BASIS OF BEARING SOLAR OBSERVATION

REFER: FB 307/58

SET SURVEY MARKER POST 3.0' N'LY

REFERENCE MEASUREMENTS

| Description               | Bearing       | Distance |
|---------------------------|---------------|----------|
| SET DISK 1229 IN 16" PINE | N 40°34'09" W | 11.09'   |
| SET REF. IRON ROD         | S 08°56'21" E | 105.21'  |
| SET RF4025-05-E05         | S 65°14'40" W | 205.11'  |

SURVEYORS CERTIFICATE: I certify the monument and accessories indicated above were field located on APRIL 10, 1996

*R. Rose*

PLS 4260

SIGNATURE

JULY 1, 1996

DATE

CHARLOTTE COUNTY SURVEY DEPT.

FIRM OR AGENCY

1000 FLORIDA STREET

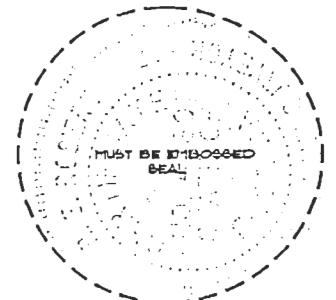
ADDRESS

PUNTA GORDA, FLA. 33950

CITY

STATE

545



SEND TO:

Department of Environmental Protection  
Bureau of Survey and Mapping  
3900 Commonwealth Boulevard  
Mail Station 105  
Tallahassee, Florida 32399

Completeness checked by: *R. Rose*

Accepted and filed: 8-1-96 Date

BLM. - I.D. 07060508 D.E.P. USE ONLY