

4025E13 222200

DOC. #

062852

FLORIDA DEPARTMENT OF ENVIRONMENTAL PROTECTION  
CERTIFIED CORNER RECORD

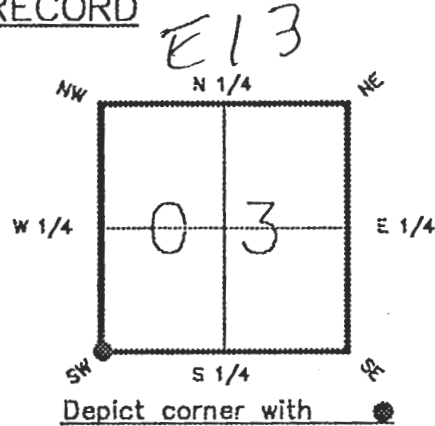
CORNER DESCRIPTION:

S. W. corner of Section \_\_\_\_\_, 03

Twp 40 S., Rge 25 E.,

Tallahassee Base Meridian,

CHARLOTTE County(s), Florida.



MONUMENTATION DESCRIPTION:

Describe original monument and accessories, or subsequent restoration. Give sources of information. (If no attempt was made to search for the original monument and accessories, this information is not necessary.)

Description of corner evidence found:

3"x3" CONCRETE MONUMENT ( K. E. ROAN )

State method(s) to determine corner location (lost corners only):

HORIZONTAL POSITION INFORMATION ( if determined ):

Latitude 27°01'11.06906" W Longitude 81°48'34.48436" W

Y(Northing) 297605.608 m X(Easting) 218895.824 m Zone FL. W.

Convergence 0°05'11.429" Scale factor 0.99994556

Coordinate determination (circle one): Field traverse GPS

Horizontal datum (circle one): NAD27 NAD83(1986) NAD83(1990) other (explain)

Order of accuracy as defined in Standards and Specifications for Geodetic Control Networks published by the Federal Geodetic Control Committee (circle one):

1st, 2nd, 3rd, class 1

or Minimum Technical Standards (Chapter 21HH-6, F.A.C.) ratio of closure for field data (example 1:10,000), . This does not specify an order of accuracy.

Control point(s) used for survey: CHARLOTTE COUNTY HORIZONTAL CONTROL NETWORK INCLUDES HAVOLINE 2, PLACIDA 2, W260, PUNTPORT, & FLGPS 58 AS B ORDER STATIONS.

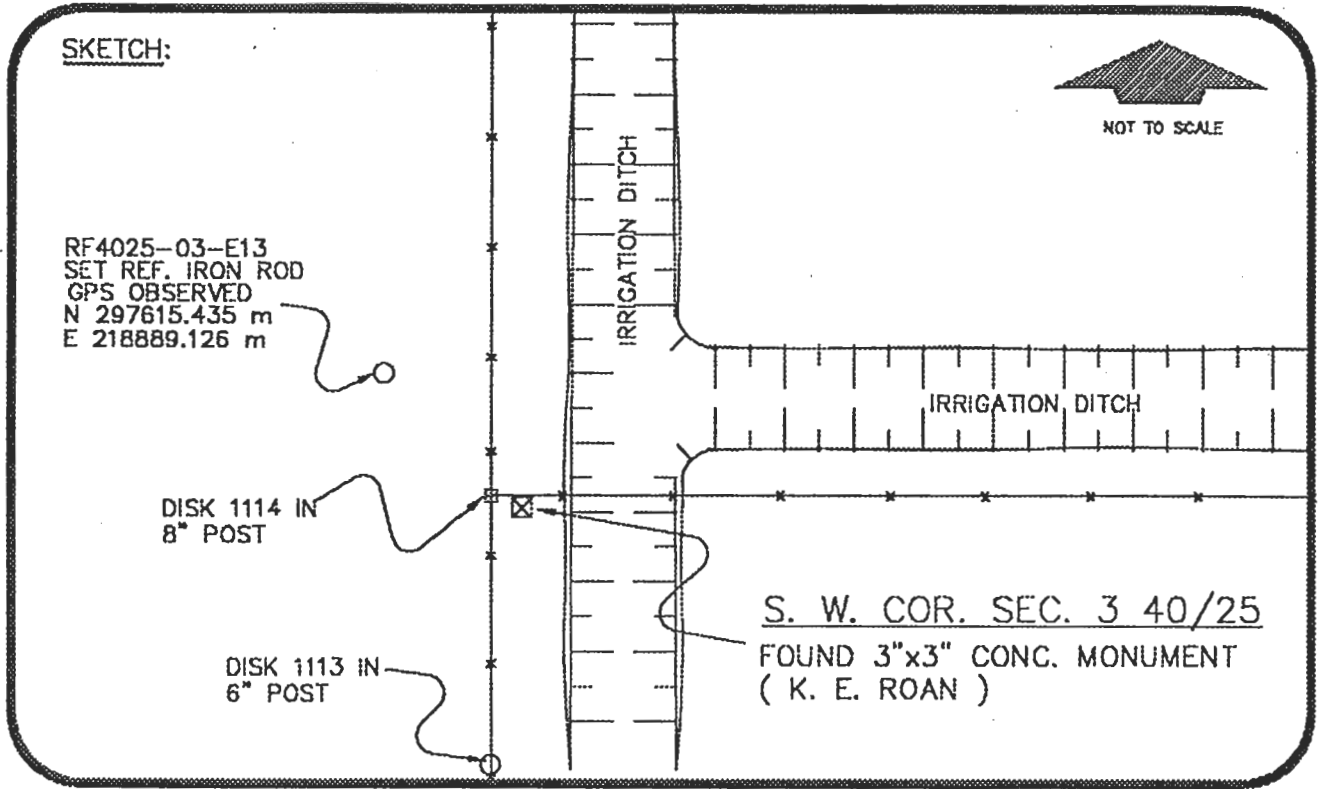
Comments:

4025E13

062852

4025E13

DOC. #



BASIS OF BEARING SOLAR OBSERVATION

REFER: FB 307/51

SURVEY MARKER SIGN NAILED TO 8" POST

REFERENCE MEASUREMENTS

<u>Description</u>	<u>Bearing</u>	<u>Distance</u>
DISK 1114 IN 8" POST	N 74°14'12" W	2.94'
DISK 1113 IN 6" POST	S 03°51'08" W	95.62'
SET REF. IRON ROD	N 34°11'29" W	39.02'

SURVEYORS CERTIFICATE: I certify the monument and accessories indicated above were field located on MAY 16 1995

*RR*

PLS 4260

SIGNATURE

REVISION 11/9/98 CORRECTION TO STATE PLANE

DATE

CHARLOTTE COUNTY SURVEY DEPT.

FIRM OR AGENCY

7000 FLORIDA STREET

ADDRESS

PUNTA GORDA, FLA. 33950

CITY

STATE

Completeness checked by: *MR*

Accepted and filed: *1-1-99*

B.L.M. - I.D. *09040310*

Date

D.E.P. USE ONLY

SEND TO:

Department of Environmental Protection  
Bureau of Survey and Mapping  
3900 Commonwealth Boulevard  
Mail Station 105  
Tallahassee, Florida 32399

