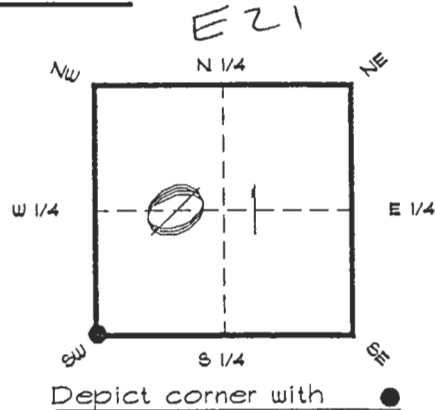


FLORIDA DEPARTMENT OF ENVIRONMENTAL PROTECTION  
CERTIFIED CORNER RECORD

CORNER DESCRIPTION:

S. W. corner of Section 1,  
Twp 40 S., Rge 25 E.,  
Tallahassee Base Meridian,  
CHARLOTTE County(s), Florida.



MONUMENTATION DESCRIPTION:

Describe original monument and accessories, or subsequent restoration. Give sources of information. (If no attempt was made to search for the original monument and accessories, this information is not necessary.)

Description of corner evidence found:

L'WOOD POST, REPLACED WITH CONCRETE MONUMENT

State method(s) to determine corner location (lost corners only):

HORIZONTAL POSITION INFORMATION ( if determined ):

Latitude 27°01'10.51669" N Longitude 81°46'35.87112" W  
Y(Northing) 297593.971 m X(Easting) 222165.365 m Zone FL. W.  
Convergence 0°06'05.313" Scale factor 0.99994724

Coordinate determination (circle one): Field traverse (GPS)

Horizontal datum (circle one): NAD27 NAD83(1986) (NAD83(1990)) other (explain)

Order of accuracy as defined in "Standards and Specifications for Geodetic Control Networks" published by the Federal Geodetic Control Committee (circle one):  
1st, (2nd), 3rd, class 1

or Minimum Technical Standards (Chapter 21HH-6, F.A.C.) ratio of closure for field data (example 1:10000), \_\_\_\_\_ . This does not specify an order of accuracy.

Control point(s) used for survey: CHARLOTTE COUNTY HORIZONTAL CONTROL NETWORK INCLUDES HAVOLINE 2, PLACIDA 2, W260, PUNTPORT, 4 FLGPS 58 AS B ORDER STATIONS.

Comments:

RECEIVED

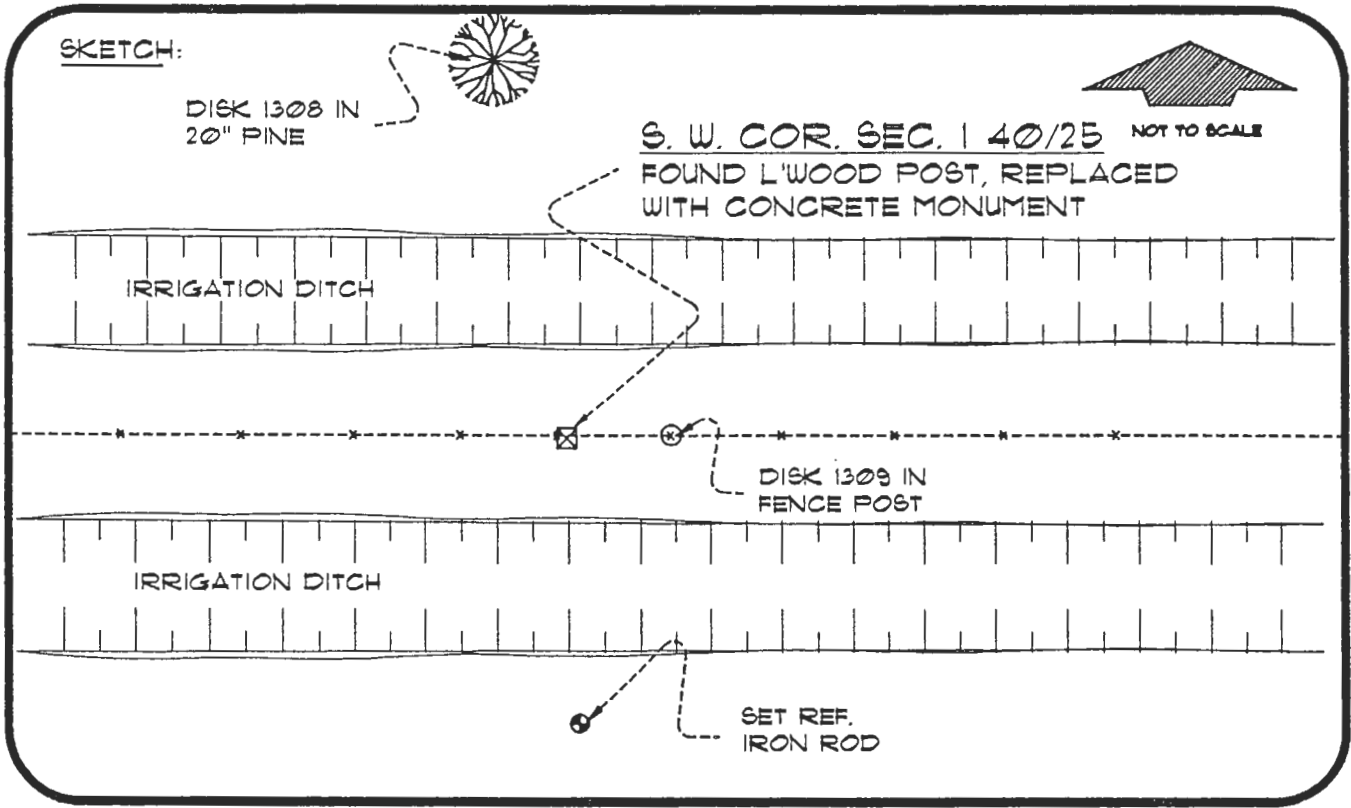
MAR 21 1995

SURVEY & MAPPING

055748

4025E21

DOC. #



BASIS OF BEARING SOLAR OBSERVATION

REFER: FB 307/49

REFERENCE MEASUREMENTS

Description	Bearing	Distance
DISK 1308 IN 20" PINE	N 16°27'21" W	97.69'
DISK 1309 IN FENCE POST	N 86°36'30" E	7.32'
SET REF. IRON ROD	S 02°58'02" E	69.09'

SURVEYORS CERTIFICATE: I certify the monument and accessories indicated above were field located on APRIL 5, 1995

*R. Rose*

PLS 4260

SIGNATURE

MARCH 12, 1996

DATE

CHARLOTTE COUNTY SURVEY DEPT.

FIRM OR AGENCY

1000 FLORIDA STREET

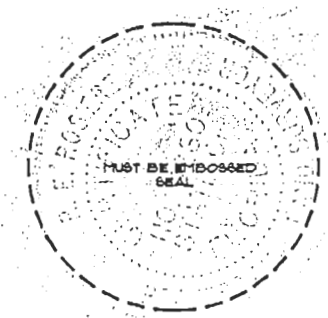
ADDRESS

PUNTA GORDA, FLA. 33950

CITY

STATE

545



Completeness checked by: *B. Linn*

Accepted and filed: *4-1-96*

BLM - ID. *11020112* Date

DEP. USE ONLY

SEND TO:

Department of Environmental Protection  
Bureau of Survey and Mapping  
3900 Commonwealth Boulevard  
Mail Station 105  
Tallahassee, Florida 32399