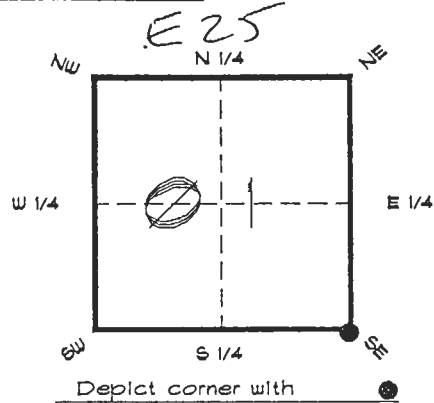


4025E25

FLORIDA DEPARTMENT OF ENVIRONMENTAL PROTECTION
CERTIFIED CORNER RECORD

CORNER DESCRIPTION:

S. E. corner of Section 1,
Twp 40 S., Rge 25 E.,
Tallahassee Base Meridian,
CHARLOTTE County(s), Florida.



MONUMENTATION DESCRIPTION:

Describe original monument and accessories, or subsequent restoration. Give sources of information. (If no attempt was made to search for the original monument and accessories, this information is not necessary.)

Description of corner evidence found:

L. WOOD POST, REPLACED WITH CONCRETE MONUMENT.

State method(s) to determine corner location (lost corners only):

HORIZONTAL POSITION INFORMATION (if determined):

Latitude 27°01'08.78750"N Longitude 81°45'37.08236"W
Y(Northing) 297543.727 m X(Easting) 223785.951 m Zone FLW
Convergence 0°06'32.015" Scale factor 0.99994816

Coordinate determination (circle one): Field traverse GPS

Horizontal datum (circle one): NAD27 NAD83(1986) NAD83(1990) other (explain)

Order of accuracy as defined in Standards and Specifications for Geodetic Control Networks published by the Federal Geodetic Control Committee (circle one):
1st, 2nd, 3rd, class 1

or Minimum Technical Standards (Chapter 61G17, F.A.C.) ratio of closure for field data (example 1:10,000), _____ . This does not specify an order of accuracy.

Control point(s) used for survey: CHARLOTTE COUNTY HORIZONTAL CONTROL NETWORK INCLUDES HAYOLINE 2, FLACIDA 2, W260, PUNTPORT, & FLGPS 58 AS B ORDER STATIONS.

Comments:

THESE CORNERS WERE ALSO LOCATED ON MARCH 18, 1975 BY CARLTON BATES REFER: FB. 5 PG. 49

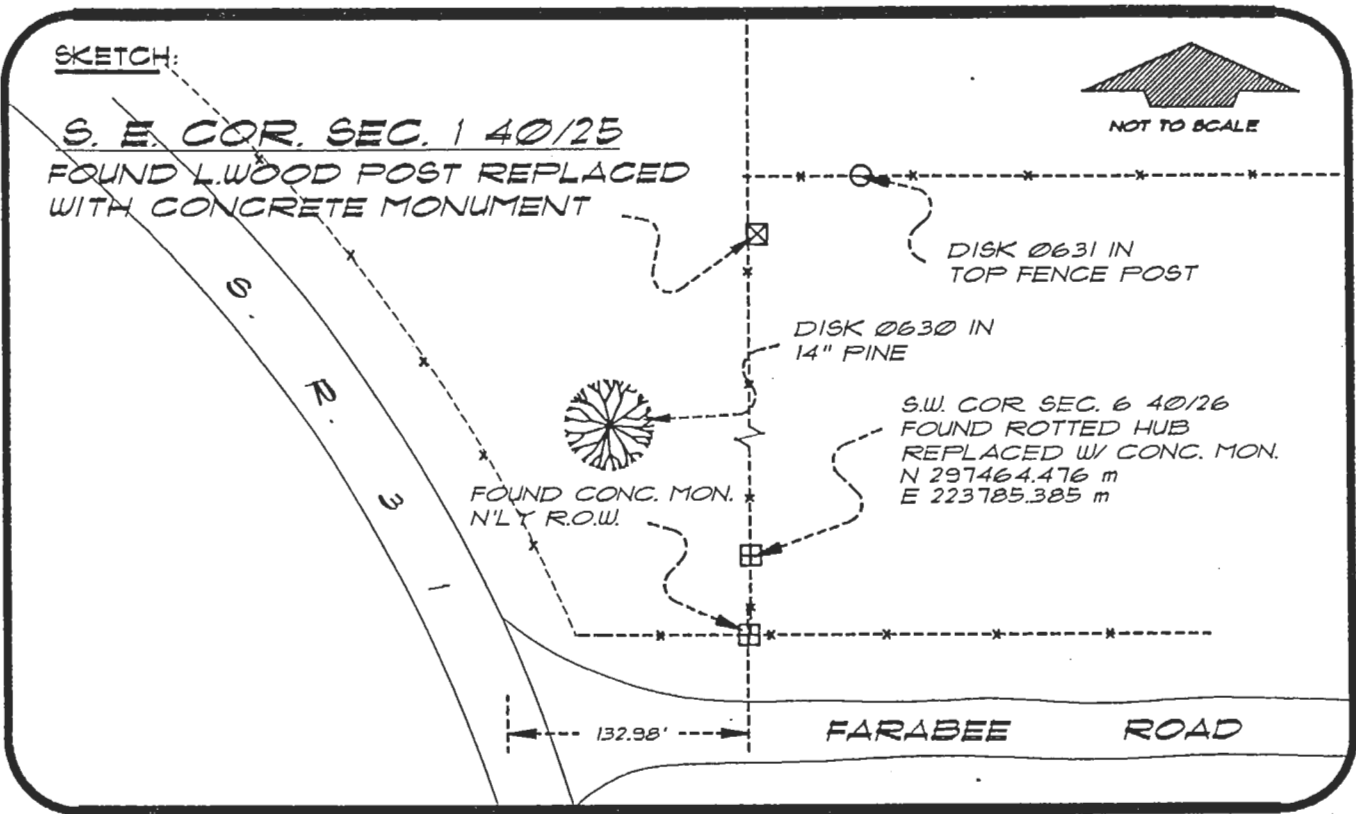
MAR 21 1996

SURVEY & MAPPING

4025E25

DOC. #

055749



BASIS OF BEARING SOLAR OBSERVATION

REFER: FB 307/06

SET SURVEY MARKER POST 1.0' N'LY

REFER: FB 5/49

REFERENCE MEASUREMENTS

Description	Bearing	Distance
CONC. MON. N'LY R.O.W.	S 00°24'37" W	282.10'
DISK Ø631 IN FENCE POST	N 64°09'23" E	17.48'
DISK Ø630 IN 14" PINE	S 32°54'55" W	129.46'
S. W. COR. SEC. 6 40/26	S 00°31'05" W	260.03'
	(GRID S 00°24'33" W)	

SURVEYORS CERTIFICATE: I certify the monument and accessories indicated above were field located on JULY 14, 1994

R. Rose
SIGNATURE

FLS 4260

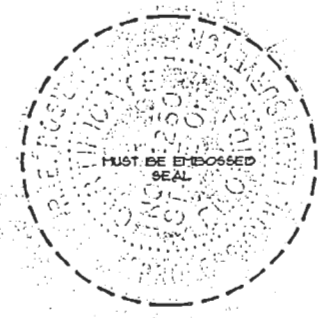
3/18/96
DATE

CHARLOTTE COUNTY SURVEY DEPT.
FIRM OR AGENCY

7000 FLORIDA STREET
ADDRESS

PUNTA GORDA, FLORIDA 33950
CITY STATE

545



Completeness checked by: *R. Rose*

Accepted and filed: *4-9-1996*
Date

BLM - I.D. 12010000 D.E.P. USE ONLY

SEND TO:

Department of Environmental Protection
Bureau of Survey and Mapping
3900 Commonwealth Boulevard
Mail Station 105
Tallahassee, Florida 32399