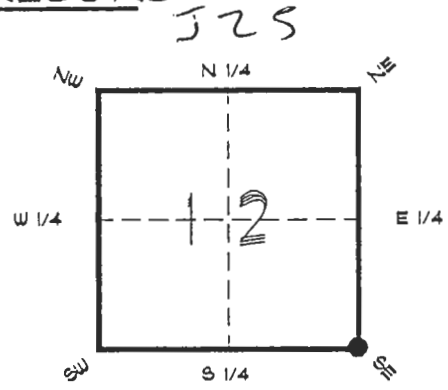


4025J25

FLORIDA DEPARTMENT OF ENVIRONMENTAL PROTECTION
CERTIFIED CORNER RECORD

CORNER DESCRIPTION:

S. E. corner of Section 12,
Twp 40 S., Rge 25 E.,
Tallahassee Base Meridian,
CHARLOTTE County(s), Florida.



Depict corner with

MONUMENTATION DESCRIPTION:

Describe original monument and accessories, or subsequent restoration. Give sources of information. (If no attempt was made to search for the original monument and accessories, this information is not necessary.)

Description of corner evidence found:

SET CONCRETE MONUMENT BY PRORATION FROM G.L.O.
TOWNSHIP PLAT

State method(s) to determine corner location (lost corners only):

HORIZONTAL POSITION INFORMATION (if determined):

Latitude 27°00'15.67296" N Longitude 81°45'37.35258" W

Y(Northing) 295908.998 m X(Easting) 223781.608 m Zone FLW.

Convergence 0°06'31.694" Scale factor 0.99994816

Coordinate determination (circle one): Field traverse GPS

Horizontal datum (circle one): NAD27 NAD83(1986) NAD83(1990) other (explain)

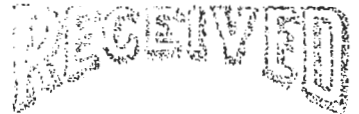
Order of accuracy as defined in "Standards and Specifications for Geodetic Control Networks," published by the Federal Geodetic Control Committee (circle one):

1st, 2nd, 3rd, class 1

or Minimum Technical Standards (Chapter 21HH-6, F.A.C.) ratio of closure for field data (example 1:10,000), . This does not specify an order of accuracy.

Control point(s) used for survey: CHARLOTTE COUNTY HORIZONTAL CONTROL NETWORK
INCLUDES HAYOLINE 2, PLACIDA 2, W260, FUNTPORT, 4 FLGPS 58 AS B ORDER STATIONS.

Comments:



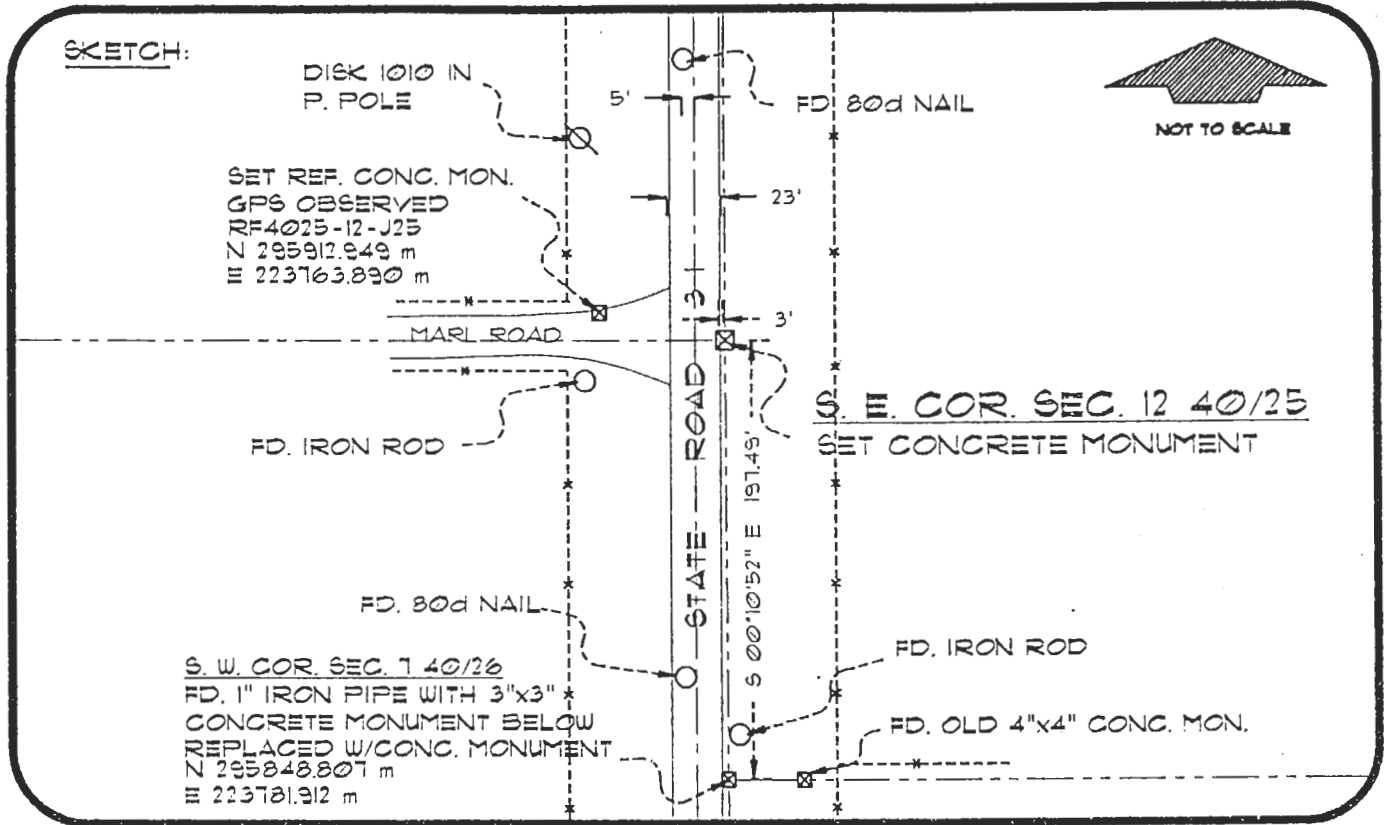
JUL 25 1993

SURVEY & MAPPING

4025J25

DOC. #

056809



BASIS OF BEARING SOLAR OBSERVATION REFER: FB 307/28

REFERENCE MEASUREMENTS

Description	Bearing	Distance
FD. 80d NAIL	N 08°12'04" W	128.81'
DISK 1010 IN P. POLE	N 35°07'32" W	110.58'
FD. IRON ROD	S 74°51'16" W	66.12'
FD. 80d NAIL	S 07°19'11" W	152.61'
FD. IRON ROD	S 01°38'03" E	176.99'
F. OLD 4"x4" CONC. MON.	S 10°09'04" E	200.63'
GPS REF. CONC. MON.	N 77°19'15" W	59.56'

SURVEYORS CERTIFICATE: I certify the monument and accessories indicated above were first located on OCTOBER 11, 1994

R. P. Rose
SIGNATURE PLS 4260

JULY 23, 1996
DATE
CHARLOTTE COUNTY SURVEY DEPT.
FIRM OR AGENCY
1000 FLORIDA STREET
ADDRESS
PUNTA GORDA FLA 33950
CITY STATE

545
ARCADIA
SE



Completeness checked by: [Signature]
Accepted and filed: 8-1-96 Date
BLM. - I.D. 13120000 D.N.R. USE ONLY

SEND TO:
Department of Environmental Protection
Bureau of Survey and Mapping
3900 Commonwealth Boulevard
Mail Station 105