

4025N05

DOC. #

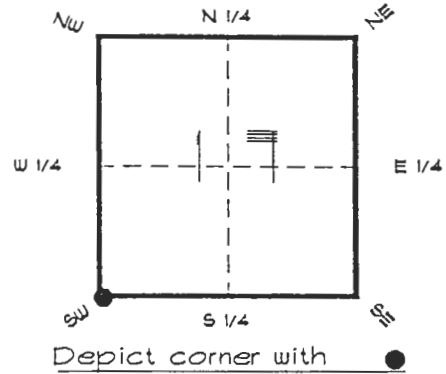
056813

FLORIDA DEPARTMENT OF ENVIRONMENTAL PROTECTION
CERTIFIED CORNER RECORD

N05

CORNER DESCRIPTION:

S. W. corner of Section 17 ,
Twp 40 S. , Rge 25 E. ,
Tallahassee Base Meridian,
CHARLOTTE County(s), Florida.



MONUMENTATION DESCRIPTION:

Describe original monument and accessories, or subsequent restoration. Give sources of information. (If no attempt was made to search for the original monument and accessories, this information is not necessary.)

Description of corner evidence found:

SET C.C.S.D. CONCRETE MONUMENT BY DOUBLE PROPORTION

State method(s) to determine corner location (lost corners only):

HORIZONTAL POSITION INFORMATION (if determined):

Latitude 26°59'24.93217" N Longitude 81°50'32.85989" W

Y(Northing) 294334.528 m X(Easting) 215636.947 m Zone FL. W.

Convergence 0°04'17.391" Scale factor 0.99994419

Coordinate determination (circle one): Field traverse GPS

Horizontal datum (circle one): NAD27 NAD83(1986) NAD83(1990) other (explain)

Order of accuracy as defined in "Standards and Specifications for Geodetic Control Networks" published by the Federal Geodetic Control Committee (circle one):
1st, 2nd, 3rd class 1 ,

or Minimum Technical Standards (Chapter 21HH-6, F.A.C.) ratio of closure for field data (example 1:10,000), _____ . This does not specify an order of accuracy.

Control point(s) used for survey: CHARLOTTE COUNTY HORIZONTAL CONTROL NETWORK
INCLUDES HAYOLINE 2, PLACIDA 2, W260, PUNTPORT, 4 FLGPS 58 AS B ORDER STATIONS.

Comments:

RECEIVED

JUL 9 1995

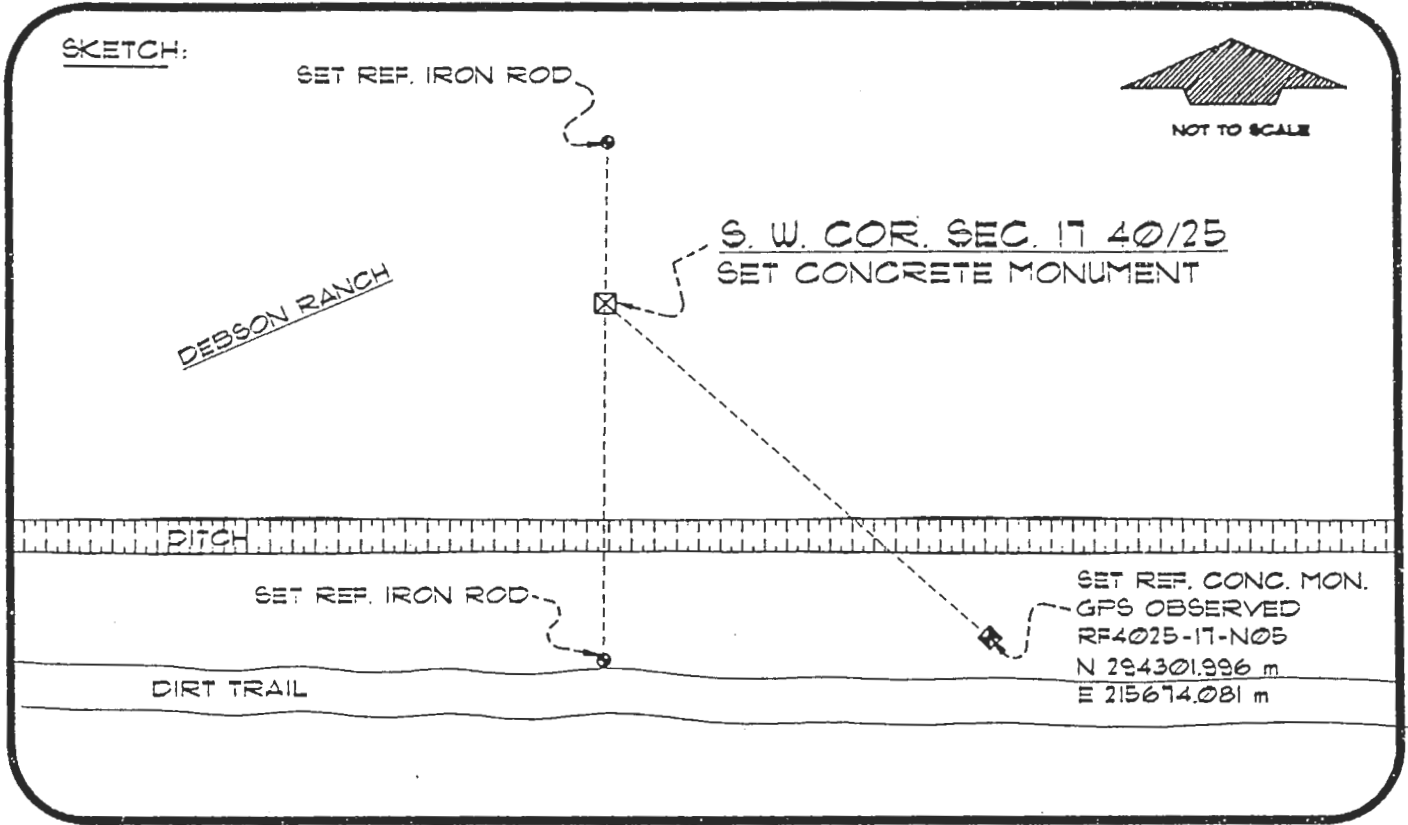
SURVEY & MAPPING

4025N05

DOC. #

056813

SKETCH:



BASIS OF BEARING SOLAR OBSERVATION
SET SURVEY MARKER POST 3' N'LY

REFER: FB 307/52

REFERENCE MEASUREMENTS

Description	Bearing	Distance
SET REF. IRON ROD	S 00°32'54" W	111.21'
SET REF. IRON ROD	N 01°07'21" E	50.98'
SET RF4025-17-N05	S 48°42'14" E	161.97'

SURVEYORS CERTIFICATE: I certify the monument and accessories indicated above were field located on APRIL 3, 1996

R. Rose

PLS 4260

SIGNATURE

JUNE 19, 1996

DATE

CHARLOTTE COUNTY SURVEY DEPT.

FIRM OR AGENCY

1000 FLORIDA STREET

ADDRESS

PUNTA GORDA, FLA. 33950

CITY

STATE

Completeness checked by: *[Signature]*

Accepted and filed: 8-1-96

8-1-96 Date

BLM. - I.D. 19181720

D.E.P. USE ONLY

SEND TO:

Department of Environmental Protection
Bureau of Survey and Mapping
3900 Commonwealth Boulevard
Mail Station 105
Tallahassee, Florida 32399

