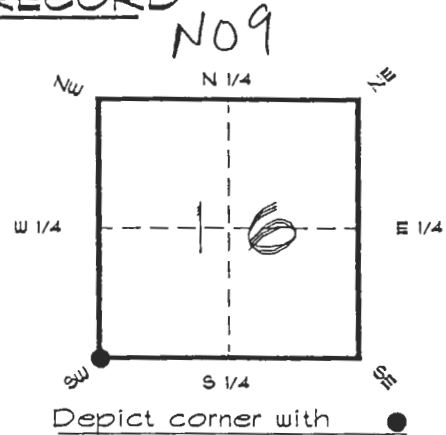


FLORIDA DEPARTMENT OF ENVIRONMENTAL PROTECTION
CERTIFIED CORNER RECORD

CORNER DESCRIPTION:

S. W. corner of Section 16,
Twp 40 S., Rge 25 E.,
Tallahassee Base Meridian,
CHARLOTTE County(s), Florida.



MONUMENTATION DESCRIPTION:

Describe original monument and accessories, or subsequent restoration. Give sources of information. (If no attempt was made to search for the original monument and accessories, this information is not necessary.)

Description of corner evidence found:

SET C.C.S.D. CONCRETE MONUMENT BY DOUBLE PROPORTION.

State method(s) to determine corner location (lost corners only):

HORIZONTAL POSITION INFORMATION (if determined):

Latitude 26°59'24.72730" N Longitude 81°49'33.57832" W
Y(Northing) 294330.369 m X(Easting) 217171.445 m Zone FL. W.
Convergence 0°04'44.295" Scale factor 0.99994486

Coordinate determination (circle one): Field traverse GPS

Horizontal datum (circle one): NAD27 NAD83(1986) NAD83(1990) other (explain)

Order of accuracy as defined in 'Standards and Specifications for Geodetic Control Networks' published by the Federal Geodetic Control Committee (circle one): 1st, 2nd, 3rd class 1

or Minimum Technical Standards (Chapter 21HH-6, F.A.C.) ratio of closure for field data (example 1:10,000), . This does not specify an order of accuracy.

Control point(s) used for survey: CHARLOTTE COUNTY HORIZONTAL CONTROL NETWORK INCLUDES HAVOLINE 2, PLACIDA 2, W260, FUNTPORT, & FLGPS 58 AS B ORDER STATIONS.

Comments:

RECEIVED

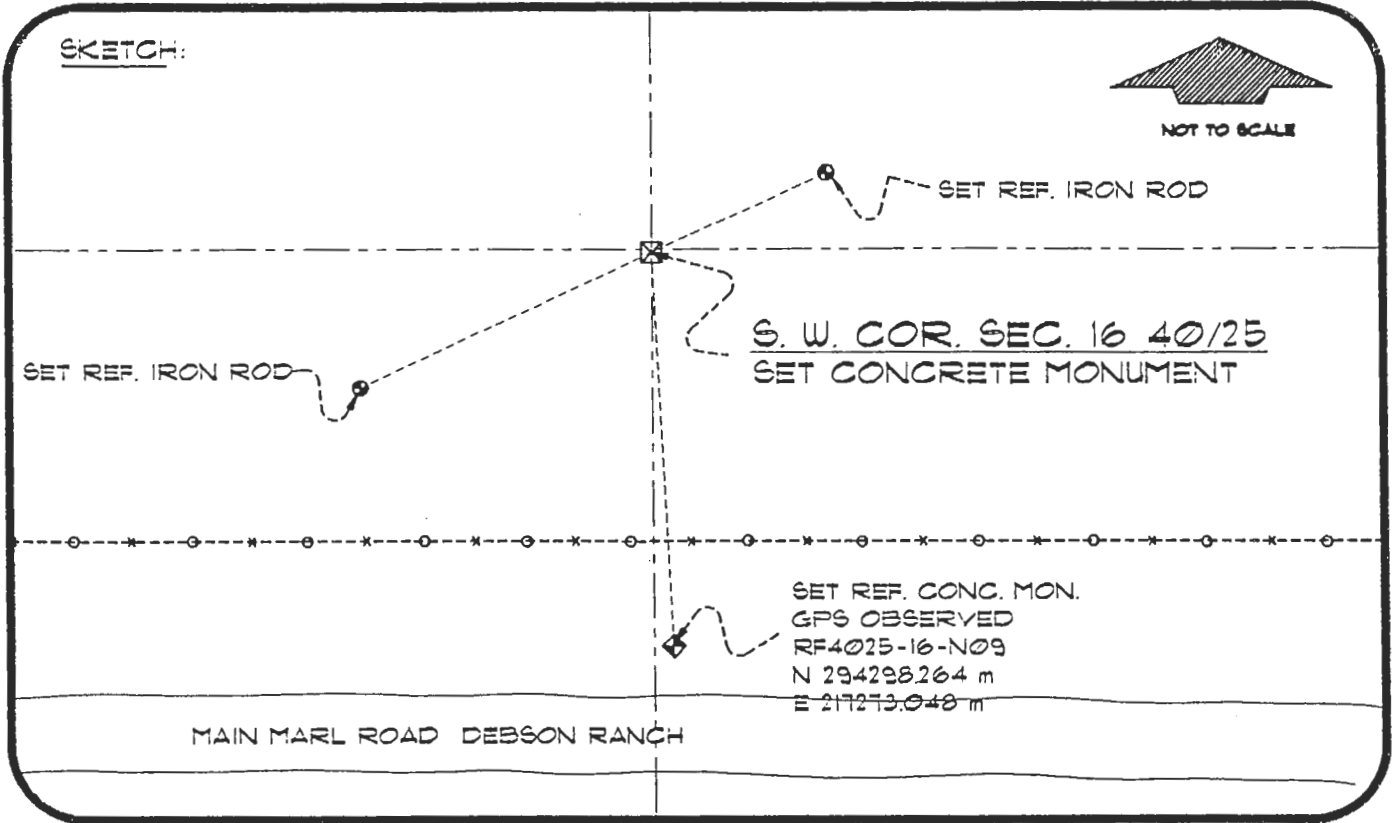
JUL 9 1995

SURVEY & MAPPING

056812

4025N09

DOC. #



BASIS OF BEARING SOLAR OBSERVATION REFER: FB 307/53
 SET SURVEY MARKER POST 3' N'LY

REFERENCE MEASUREMENTS

Description	Bearing	Distance
SET REF. IRON ROD	S 64°46'20" W	85.99'
SET REF. IRON ROD	N 66°35'17" E	51.13'
SET RF4025-16-N09	S 02°46'45" E	105.47

SURVEYORS CERTIFICATE: I certify the monument and accessories indicated above were field located on APRIL 2, 1996

R. Rose

PLS 4260

SIGNATURE

JUNE 19, 1996

DATE

CHARLOTTE COUNTY SURVEY DEPT.

FIRM OR AGENCY

1000 FLORIDA STREET

ADDRESS

PUNTA GORDA, FLA. 33950

CITY

STATE

507



Completeness checked by: *[Signature]*
 Accepted and filed: 8-1-96 Date
 B.L.M. - ID. 20171621 D.E.P. USE ONLY

SEND TO:

Department of Environmental Protection
 Bureau of Survey and Mapping
 3900 Commonwealth Boulevard
 Mall Station 105
 Tallahassee, Florida 32399