

4025N25

DOC. #

056810

FLORIDA DEPARTMENT OF ENVIRONMENTAL PROTECTION CERTIFIED CORNER RECORD

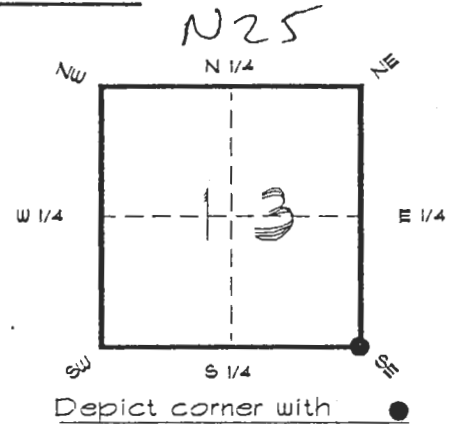
CORNER DESCRIPTION:

S. E. corner of Section 13 ,

Twp 40 S. , Rge 25 E. ,

Tallahassee Base Meridian,

CHARLOTTE County(s), Florida.



MONUMENTATION DESCRIPTION:

Describe original monument and accessories, or subsequent restoration. Give sources of information. (If no attempt was made to search for the original monument and accessories, this information is not necessary.)

Description of corner evidence found:

SET RAILROAD SPIKE BY SINGLE PROPORTION FROM G.L.O. TOWNSHIP PLAT

State method(s) to determine corner location (lost corners only):

RECEIVED

JUL 25 1990

SURVEY & MAPPING

HORIZONTAL POSITION INFORMATION (if determined):

Latitude 26°59'22.84764" N Longitude 81°45'37.70310" W

Y(Northing) 294283.170 m X(Easting) 223775.030 m Zone FL. W.

Convergence 0°06'31.338" Scale factor 0.99994815

Coordinate determination (circle one): Field traverse GPS

Horizontal datum (circle one): NAD27 NAD83(1986) NAD83(1990) other (explain)

Order of accuracy as defined in "Standards and Specifications for Geodetic Control Networks" published by the Federal Geodetic Control Committee (circle one):

1st, 2nd, 3rd class 1 ,

or Minimum Technical Standards (Chapter 21HH-6, F.A.C.) ratio of closure for field data (example 1:10,000), _____ . This does not specify an order of accuracy.

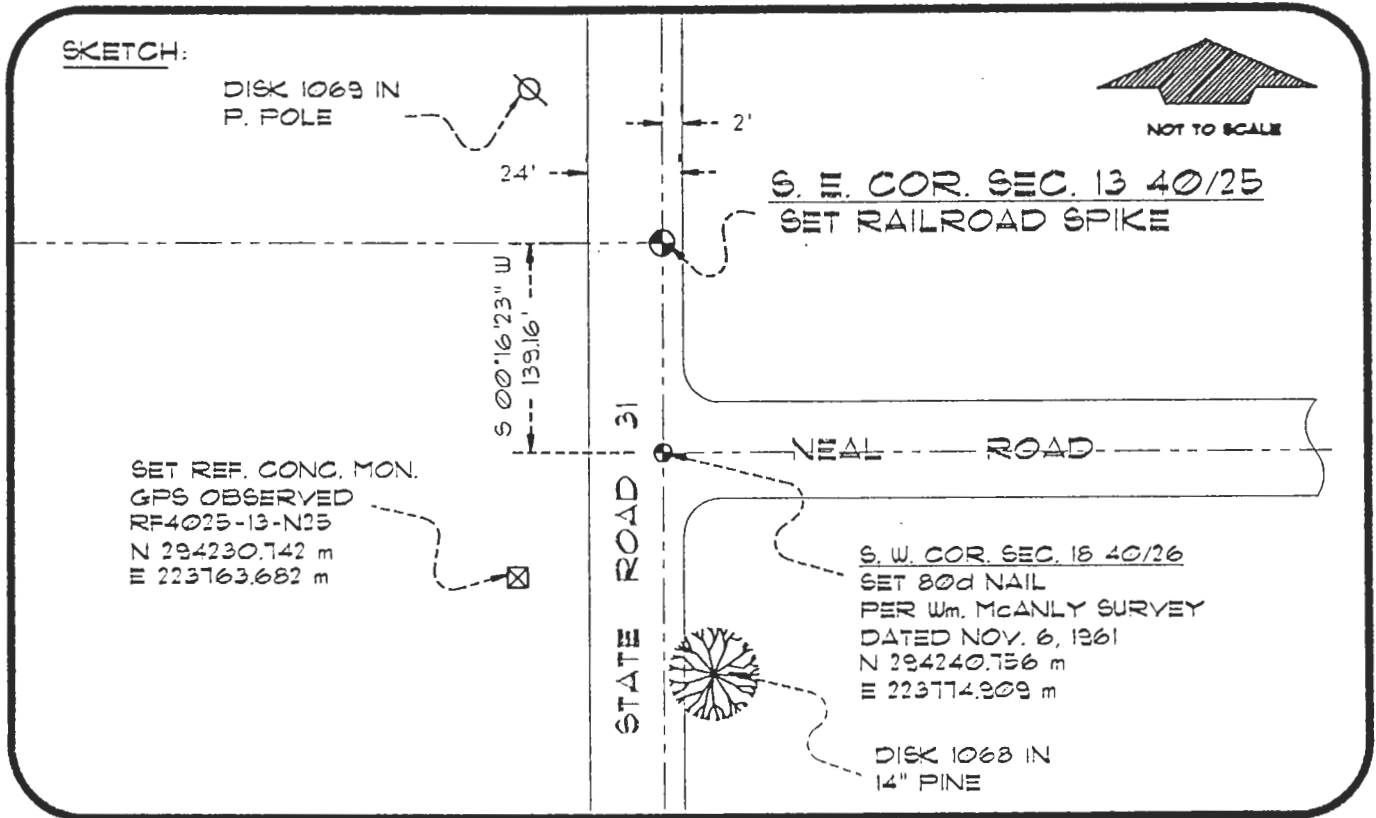
Control point(s) used for survey: CHARLOTTE COUNTY HORIZONTAL CONTROL NETWORK INCLUDES HAYOLINE 2, PLACIDA 2, W260, PUNTPORT, 4 FLGPS 58 AS B ORDER STATIONS.

Comments:

4025N25

DOC. #

056810



BASIS OF BEARING SOLAR OBSERVATION

REFER: FB 307/27

REFERENCE MEASUREMENTS

Description	Bearing	Distance
S. W. COR. SEC. 18 40/26	S 00°16'23" W	139.16'
DISK 1069 IN P. POLE	N 38°32'04" W	97.60'
DISK 1068 IN 14" PINE	S 05°35'07" E	241.40'
SET REF. CONC. MON.	S 12°19'20" W	176.00'

SURVEYORS CERTIFICATE: I certify the monument and accessories indicated above were field located on OCTOBER 6, 1996

R. P. Rose

PLS 4260

SIGNATURE

JULY 22, 1996

DATE

CHARLOTTE COUNTY SURVEY DEPT.

FIRM OR AGENCY

1000 FLORIDA STREET

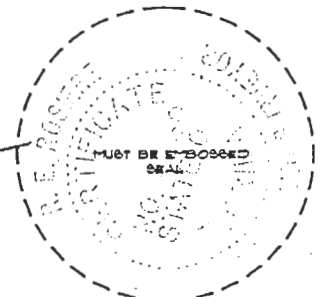
ADDRESS

PUNTA GORDA, FLA. 33950

CITY

STATE

507
BERNMENT



Completeness checked by: *[Signature]*

Accepted and filed: 8-1-96

Date

BLM. - ID. 24130000

DNR USE ONLY

SEND TO:

Department of Environmental Protection
Bureau of Survey and Mapping
3300 Commonwealth Boulevard
Mail Station 105
Tallahassee, Florida 32399