

4025R09

DOC. #

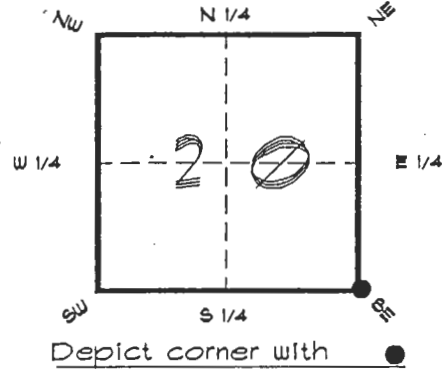
055755

FLORIDA DEPARTMENT OF ENVIRONMENTAL PROTECTION CERTIFIED CORNER RECORD

RO9

CORNER DESCRIPTION:

S. E. corner of Section 20 ,
Twp 40 S. , Rge 25 E. ,
Tallahassee Base Meridian,
CHARLOTTE County(s), Florida.



MONUMENTATION DESCRIPTION:

Describe original monument and accessories, or subsequent restoration. Give sources of information. (If no attempt was made to search for the original monument and accessories, this information is not necessary.)

Description of corner evidence found:

4"x4" CONCRETE MONUMENT (BROKEN) 1.0' BELOW GRADE

State method(s) to determine corner location (lost corners only):

HORIZONTAL POSITION INFORMATION (if determined):

Latitude 26°58'31.48760" N Longitude 81°49'34.40076" W
Y(Northing) 292691.782 m X(Easting) 217251.024 m Zone FL. W.
Convergence 0°04'43.778" Scale factor 0.99994485

Coordinate determination (circle one): Field traverse GPS

Horizontal datum (circle one): NAD27 NAD83(1986) NAD83(1990) other (explain)

Order of accuracy as defined in "Standards and Specifications for Geodetic Control Networks" published by the Federal Geodetic Control Committee (circle one):
1st, 2nd, 3rd, class 1 ,

or Minimum Technical Standards (Chapter 21HH-6, F.A.C.) ratio of closure for field data (example 1:10,000), _____ . This does not specify an order of accuracy.

Control point(s) used for survey: CHARLOTTE COUNTY HORIZONTAL CONTROL NETWORKS INCLUDES HAYOLINE 2, PLACIDA 2, W260, PUNTPORT, 4 FLGPS 58 AS B ORDER STATIONS.

Comments:

RECEIVED

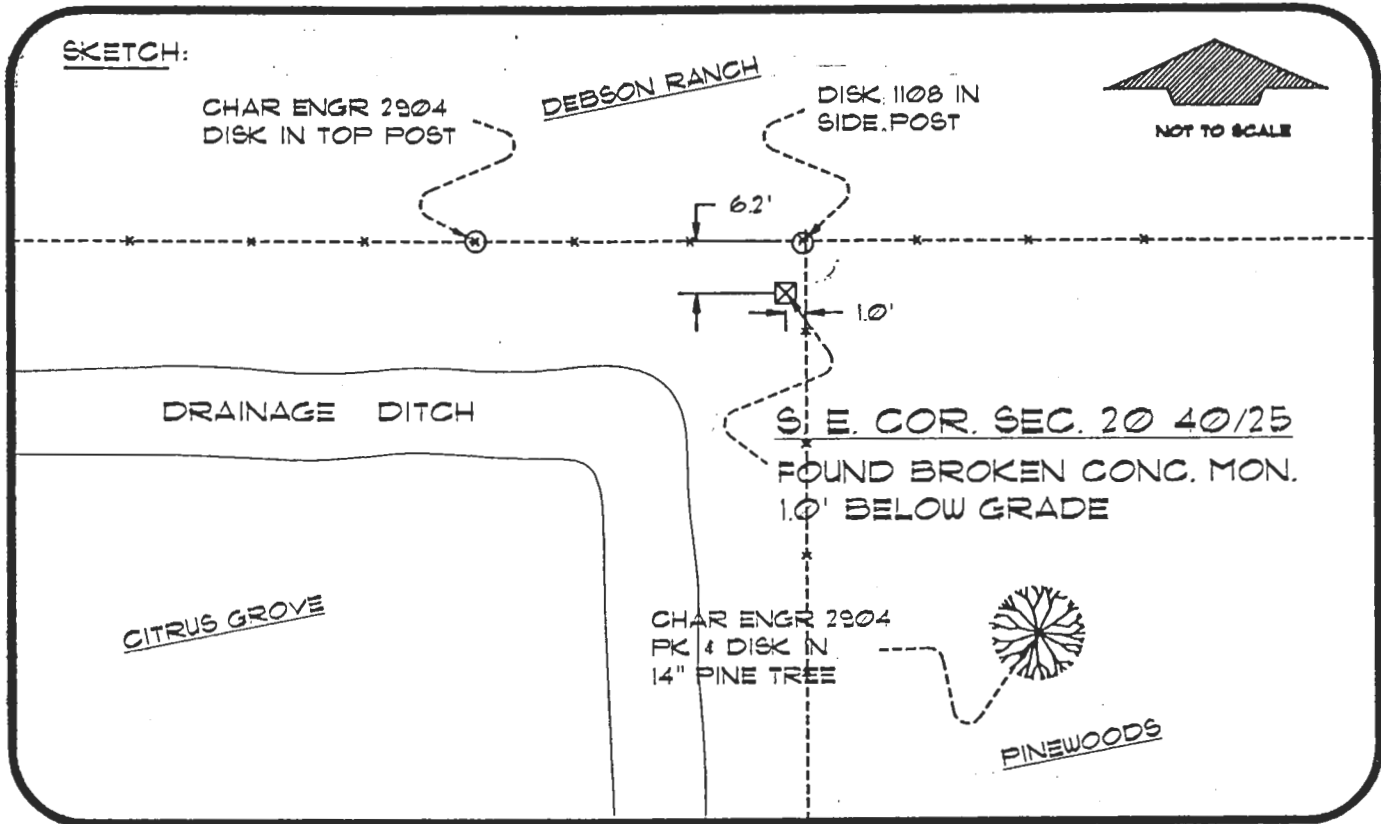
MAR 21 1995

SURVEY & MAPPING

4025R09

DOC. #

055755



BASIS OF BEARING SOLAR OBSERVATION

REFER: FB 307/41

REFERENCE MEASUREMENTS

Description	Bearing	Distance
CHAR ENGR DISK IN TOP POST	N 80°12'57" W	38.68'
DISK 1108 IN SIDE POST	N 05°51'28" E	6.45'
DISK 2904 IN 14" PINE	S 20°26'22" E	57.42'

SURVEYORS CERTIFICATE: I certify the monument and accessories indicated above were field located on FEBRUARY 27, 1995

R. Rose

PLS 4260

SIGNATURE

MARCH 11, 1996

DATE

CHARLOTTE COUNTY SURVEY DEPT.

FIRM OR AGENCY

7000 FLORIDA STREET

ADDRESS

FUNTA GORDA, FLA. 33950

CITY

STATE

507



Completeness checked by: *R. Rose*

Accepted and filed: *R. Rose*

BLM. - I.D. 29202128 Date 4-1-96

DEP. USE ONLY

SEND TO:

Department of Environmental Protection
 Bureau of Survey and Mapping
 3900 Commonwealth Boulevard
 Mail Station 105
 Tallahassee, Florida 32399