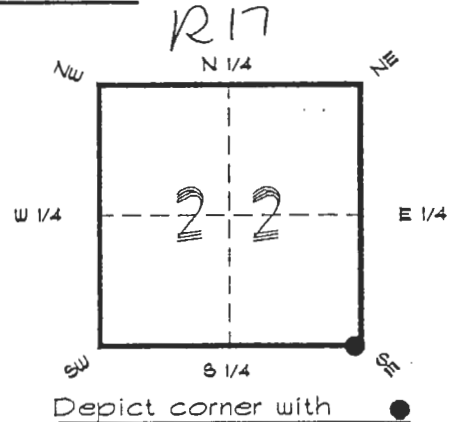


# FLORIDA DEPARTMENT OF ENVIRONMENTAL PROTECTION CERTIFIED CORNER RECORD

CORNER DESCRIPTION:

S. E. corner of Section 22 ,  
Twp 40 S. , Rge 25 E. ,  
Tallahassee Base Meridian,  
CHARLOTTE County(s), Florida.



MONUMENTATION DESCRIPTION:

Describe original monument and accessories, or subsequent restoration. Give sources of information. (If no attempt was made to search for the original monument and accessories, this information is not necessary.)

Description of corner evidence found:

6"x6" CONCRETE MONUMENT WITH 1/4" IRON PIPE IN CENTER  
AT GROUND LEVEL

State method(s) to determine corner location (lost corners only):

HORIZONTAL POSITION INFORMATION ( if determined ):

Latitude 26°58'30.65298" N Longitude 81°47'34.91088" W

Y(Northing) 292671.061 m X(Easting) 220546.031 m Zone FL. W.

Convergence 0°05'37.977" Scale factor 0.99994639

Coordinate determination (circle one): Field traverse GPS

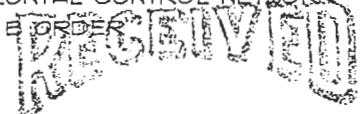
Horizontal datum (circle one): NAD27 NAD83(1986) NAD83(1990) other (explain)

Order of accuracy as defined in "Standards and Specifications for Geodetic Control Networks" published by the Federal Geodetic Control Committee (circle one):  
1st, 2nd, 3rd, class 1 ,

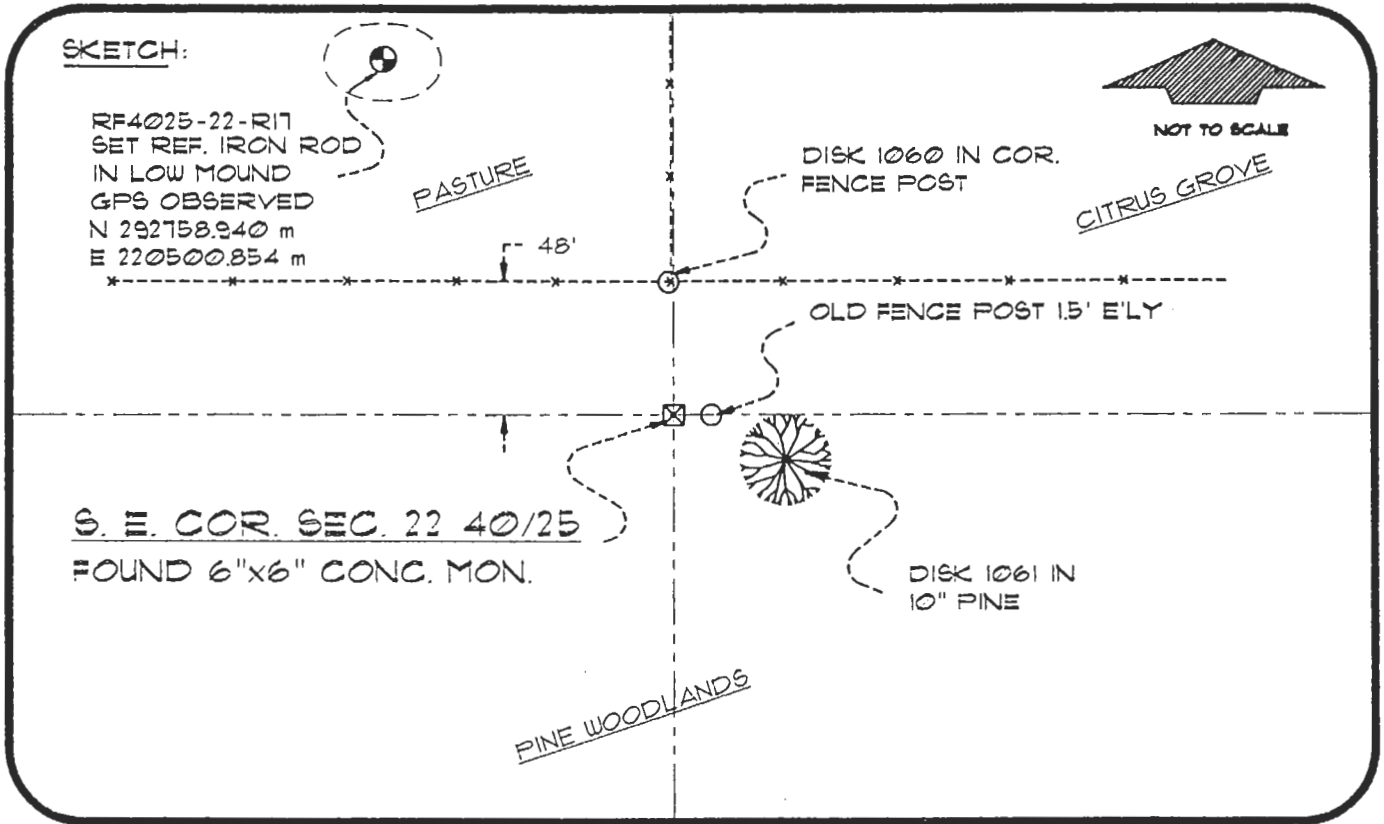
or Minimum Technical Standards (Chapter 21HH-6, F.A.C.) ratio of closure for field data (example 1:10,000), \_\_\_\_\_ . This does not specify an order of accuracy.

Control point(s) used for survey: CHARLOTTE COUNTY HORIZONTAL CONTROL NETWORK  
INCLUDES HAVOLINE 2, PLACIDA 2, W260, PUNTPORT, 4 FLGPS 58 AS 1<sup>ST</sup> ORDER STATIONS.

Comments:



JUN 30 1997



BASIS OF BEARING SOLAR OBSERVATION  
SET SURVEY MARKER POST 3' S'LY

REFER: FB 307/34

REFERENCE MEASUREMENTS

Description	Bearing	Distance
DISK 1060 IN FENCE POST	N 00°32'13" E	48.13'
DISK 1061 IN 10" PINE	S 76°05'05" E	14.74'
SET REF. IRON ROD	N 27°06'47" W	324.20'

SURVEYORS CERTIFICATE: I certify the monument and accessories indicated above were field located on NOVEMBER 9, 1994

*R. Rose*  
SIGNATURE

PLS 4260

July 24, 1996  
DATE

CHARLOTTE COUNTY SURVEY DEPT.

FIRM OR AGENCY

1000 FLORIDA STREET

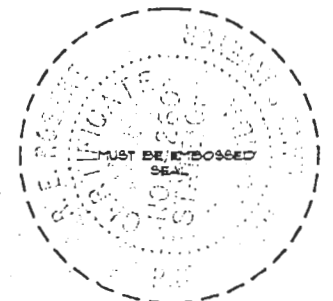
ADDRESS

FUNTA GORDA FLA. 33950

CITY

STATE

507



Completeness checked by: *R. Rose*

Accepted and filed: 7-1-97

BLM - ID. 27222326 Date

DNR. USE ONLY

SEND TO:

Department of Environmental Protection  
Bureau of Survey and Mapping  
3900 Commonwealth Boulevard  
Mail Station 105  
Tallahassee, Florida 32399