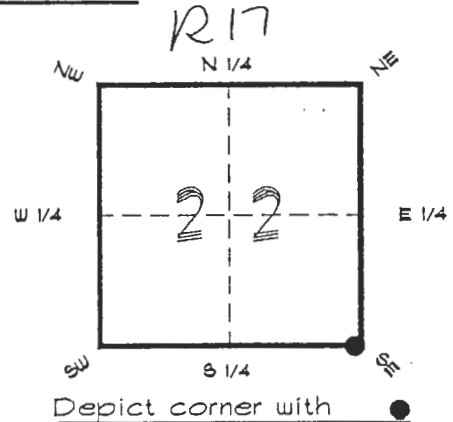


FLORIDA DEPARTMENT OF ENVIRONMENTAL PROTECTION
CERTIFIED CORNER RECORD

CORNER DESCRIPTION:

S. E. corner of Section 22 ,
Twp 40 S. , Rge 25 E. ,
Tallahassee Base Meridian,
CHARLOTTE County(s), Florida.



MONUMENTATION DESCRIPTION:

Describe original monument and accessories, or subsequent restoration. Give sources of information. (If no attempt was made to search for the original monument and accessories, this information is not necessary.)

Description of corner evidence found:

6"x6" CONCRETE MONUMENT WITH 1/4" IRON PIPE IN CENTER
AT GROUND LEVEL

State method(s) to determine corner location (lost corners only):

HORIZONTAL POSITION INFORMATION (if determined):

Latitude 26°58'30.65298" N Longitude 81°47'34.91088" W

Y(Northing) 292671.061 m X(Easting) 220546.031 m Zone FL. W.

Convergence 0°05'37.977" Scale factor 0.99994639

Coordinate determination (circle one): Field traverse GPS

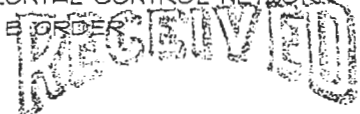
Horizontal datum (circle one): NAD27 NAD83(1986) NAD83(1990) other (explain)

Order of accuracy as defined in "Standards and Specifications for Geodetic Control Networks" published by the Federal Geodetic Control Committee (circle one):
1st, 2nd, 3rd, class 1 ,

or Minimum Technical Standards (Chapter 21HH-6, F.A.C.) ratio of closure for field data (example 1:10,000), . This does not specify an order of accuracy.

Control point(s) used for survey: CHARLOTTE COUNTY HORIZONTAL CONTROL NETWORK INCLUDES HAVOLINE 2, PLACIDA 2, W260, PUNTPORT, 4 FLGPS 58 AS 1ST ORDER STATIONS.

Comments:

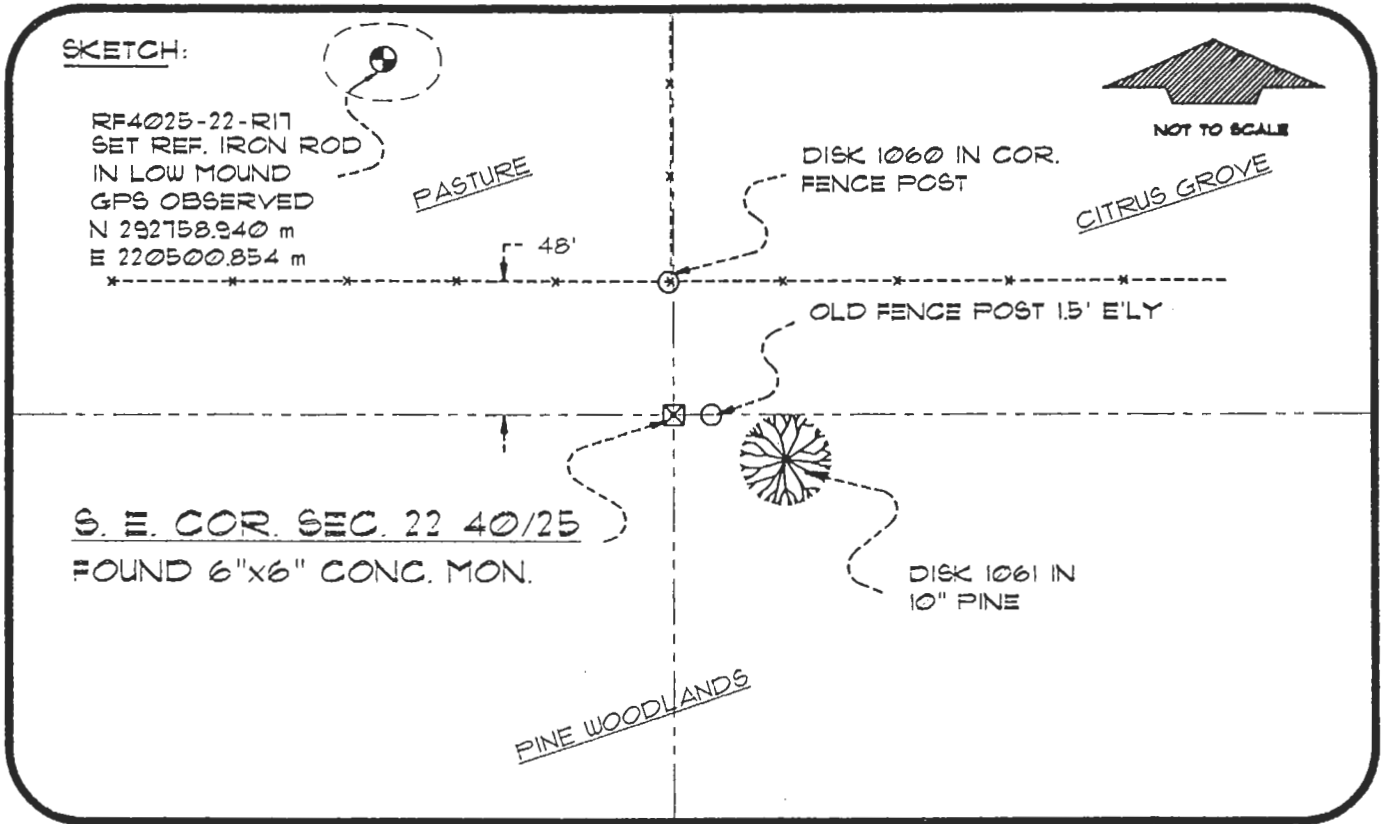


JUN 30 1999

4025RIT

DOC. #

059850



BASIS OF BEARING SOLAR OBSERVATION
SET SURVEY MARKER POST 3' S'LY

REFER: FB 307/34

REFERENCE MEASUREMENTS

<u>Description</u>	<u>Bearing</u>	<u>Distance</u>
DISK 1060 IN FENCE POST	N 00°32'13" E	48.13'
DISK 1061 IN 10" PINE	S 76°05'05" E	14.74'
SET REF. IRON ROD	N 27°06'47" W	324.20'

SURVEYORS CERTIFICATE: I certify the monument and accessories indicated above were field located on NOVEMBER 9, 1994

R. Rose
SIGNATURE

PLS 4260

July 24, 1996
DATE

CHARLOTTE COUNTY SURVEY DEPT.

FIRM OR AGENCY

1000 FLORIDA STREET

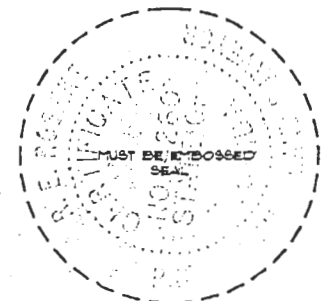
ADDRESS

FUNTA GORDA FLA. 33950

CITY

STATE

507



Completeness checked by: *[Signature]*

Accepted and filed: 7-1-97 Date

BLM. - ID. 27222326

DNR. USE ONLY

SEND TO:

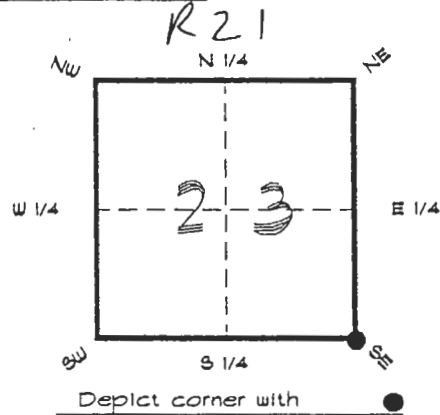
Department of Environmental Protection
Bureau of Survey and Mapping
3900 Commonwealth Boulevard
Mail Station 105
Tallahassee, Florida 32399

4025R21

FLORIDA DEPARTMENT OF ENVIRONMENTAL PROTECTION
CERTIFIED CORNER RECORD

CORNER DESCRIPTION:

S. E. corner of Section 23 ,
Twp 40 S. , Rge 25 E. ,
Tallahassee Base Meridian,
CHARLOTTE County(s), Florida.



MONUMENTATION DESCRIPTION:

Describe original monument and accessories, or subsequent restoration. Give sources of information. (If no attempt was made to search for the original monument and accessories, this information is not necessary.)

Description of corner evidence found:

8" ROUND CONCRETE MONUMENT

State method(s) to determine corner location (lost corners only):

HORIZONTAL POSITION INFORMATION (if determined):

Latitude 26°58'30.27043" N Longitude 81°46'36.52136" W
Y(Northing) 292662.029 m X(Easting) 222156.163 m Zone FLW
Convergence 0°06'04.462" Scale factor 0.99994723

Coordinate determination (circle one): Field traverse GPS

Horizontal datum (circle one): NAD27 NAD83(1986) NAD83(1990) other (explain)

Order of accuracy as defined in Standards and Specifications for Geodetic Control Networks published by the Federal Geodetic Control Committee (circle one):
1st, 2nd, 3rd class

or Minimum Technical Standards (Chapter 61G17, F.A.C.) ratio of closure for field data (example 1:10,000), _____ . This does not specify an order of accuracy.

Control point(s) used for survey: **CHARLOTTE COUNTY HORIZONTAL CONTROL NETWORK INCLUDES HAYOLINE 2, PLACIDA 2, W260, PUNTPORT, & FLGPS 55-45-B ORDER STATIONS.**

Comments:



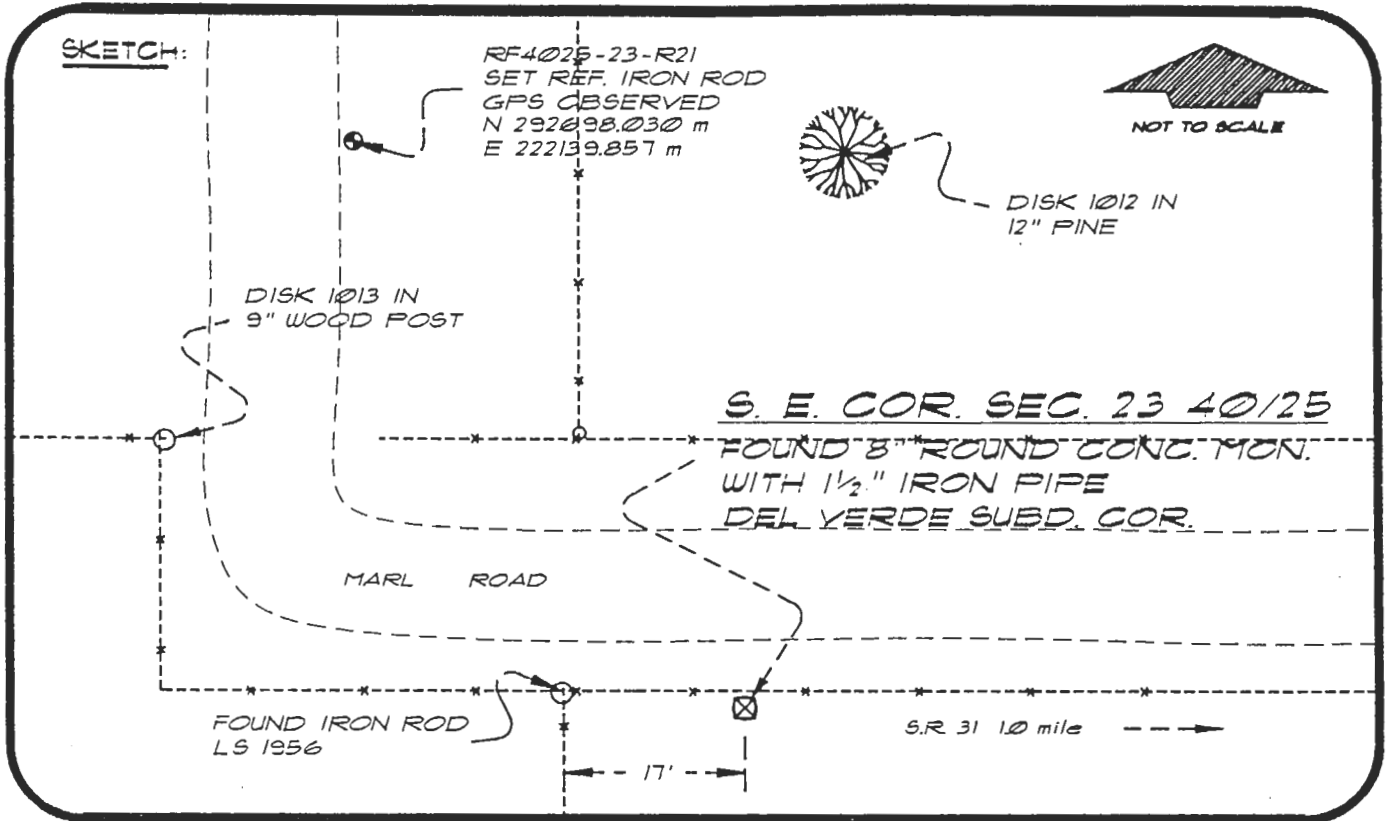
JUN 30 1997

SURVEY & MAPPING

4025R21

DOC. #

059851



BASIS OF BEARING SOLAR OBSERVATION

REFER: FB 307/45

REFERENCE MEASUREMENTS

<u>Description</u>	<u>Bearing</u>	<u>Distance</u>
DISK 1012 IN 12" PINE	N 08°14'50" E	136.63'
DISK 1013 IN 9" POST	N 52°49'33" W	109.43'
Fd. IRON ROD LS 1956	N 87°12'44" W	17.13'
SET REF. IRON ROD	N 24°16'01" W	129.67'

SURVEYORS CERTIFICATE: I certify the monument and accessories indicated above were field located on MARCH 14, 1995

R. Rose
SIGNATURE

PLS 4260

AUGUST 20, 1996

DATE

CHARLOTTE COUNTY SURVEY DEPT.

FIRM OR AGENCY

7000 FLORIDA STREET

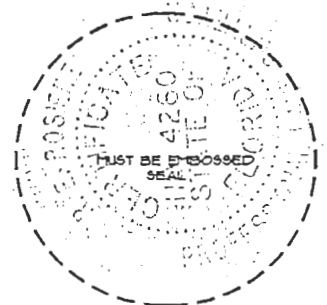
ADDRESS

PUNTA GORDA, FLORIDA 33950

CITY

STATE

507



Completeness checked by: *R. Rose*

Accepted and filed: 7-1-97 Date

BLM. - ID. 26232425 D.E.P. USE ONLY

SEND TO:

Department of Environmental Protection
Bureau of Survey and Mapping
3900 Commonwealth Boulevard
Mail Station 105
Tallahassee, Florida 32399