

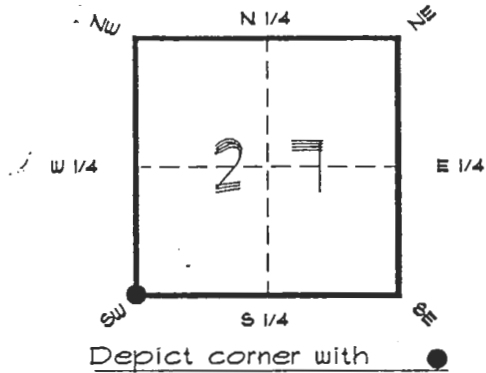
4025V13

FLORIDA DEPARTMENT OF ENVIRONMENTAL PROTECTION  
CERTIFIED CORNER RECORD

V13

CORNER DESCRIPTION:

S. W. corner of Section 27,  
Twp 40 S., Rge 25 E.,  
Tallahassee Base Meridian,  
CHARLOTTE County(s), Florida.



MONUMENTATION DESCRIPTION:

Describe original monument and accessories, or subsequent restoration. Give sources of information. (If no attempt was made to search for the original monument and accessories, this information is not necessary.)

Description of corner evidence found:

1" IRON PIPE, REPLACED WITH CONCRETE MONUMENT

State method(s) to determine corner location (lost corners only):

HORIZONTAL POSITION INFORMATION ( if determined ):

Latitude 26°57'37.18310" N Longitude 81°48'35.85806" W  
Y(Northing) 291022.782 m X(Easting) 218867.868 m Zone FL. W.  
Convergence 0°05'10.173" Scale factor 0.99994557

Coordinate determination (circle one): Field traverse  GPS

Horizontal datum (circle one): NAD27, NAD83(1986), NAD83(1990), other (explain)

Order of accuracy as defined in "Standards and Specifications for Geodetic Control Networks" published by the Federal Geodetic Control Committee (circle one):

1st, 2nd, 3rd, class 1

or Minimum Technical Standards (Chapter 21HH-6, F.A.C.) ratio of closure for field data (example 1:10,000), . This does not specify an order of accuracy.

Control point(s) used for survey: CHARLOTTE COUNTY HORIZONTAL CONTROL NETWORK INCLUDES HAYOLINE 2, FLACIDA 2, W260, PUNTPORT, 4 FLGPS 58 AS B ORDER STATIONS.

Comments:

RECEIVED

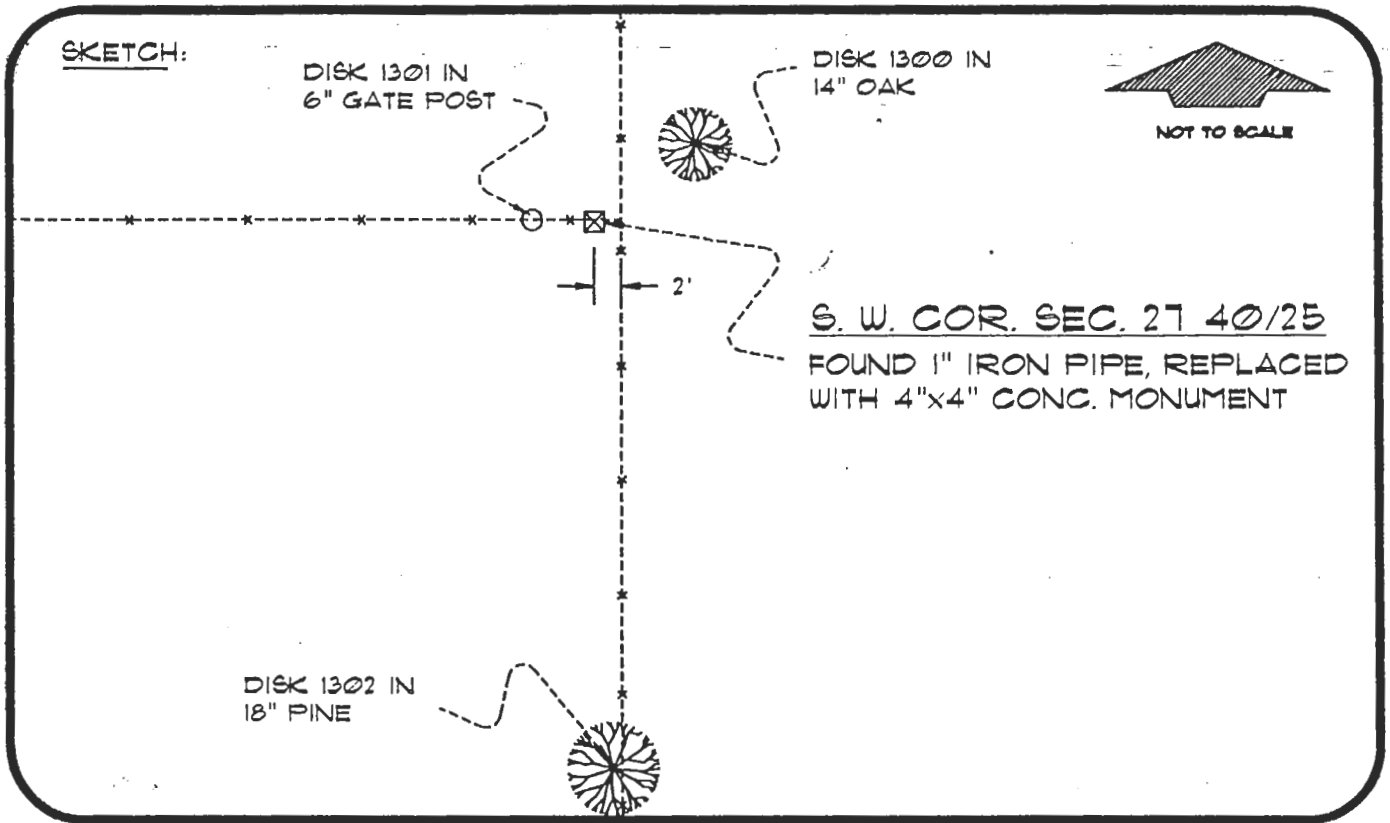
MAR 21 1996

SURVEY & MAPPING

055757

4025V13

DOC. #



BASIS OF BEARING SOLAR OBSERVATION

REFER: FB 307/41

REFERENCE MEASUREMENTS

<u>Description</u>	<u>Bearing</u>	<u>Distance</u>
DISK 1301 IN SIDE 6" GATE POST	N 89°39'01" W	13.22'
DISK 1300 IN 14" OAK	N 32°40'14" E	25.31'
DISK 1302 IN 18" PINE	S 00°07'21" E	364.86'

SURVEYORS CERTIFICATE: I certify the monument and accessories indicated above were field located on MARCH 21, 1995

*R. Rose*

PLS 4260

SIGNATURE

MARCH 11, 1996

DATE

CHARLOTTE COUNTY SURVEY DEPT.

FIRM OR AGENCY

7000 FLORIDA STREET

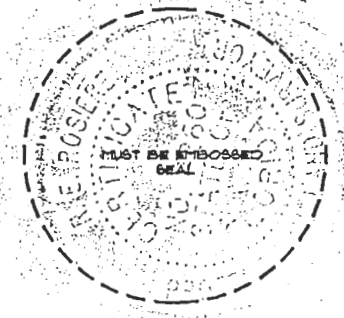
ADDRESS

PUNTA GORDA, FLA. 33950

CITY

STATE

507



Completeness checked by: *[Signature]*

Accepted and filed: *[Signature]*

Date

BLM. - ID. 33282734

DEP. USE ONLY

SEND TO:

Department of Environmental Protection  
Bureau of Survey and Mapping  
3900 Commonwealth Boulevard  
Mail Station 105  
Tallahassee, Florida 32399