

4025V17

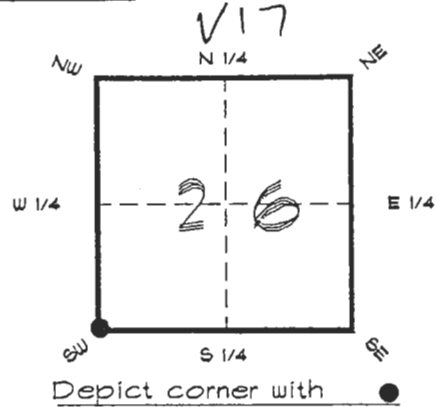
DOC. #

055756

FLORIDA DEPARTMENT OF ENVIRONMENTAL PROTECTION CERTIFIED CORNER RECORD

CORNER DESCRIPTION:

S. W. corner of Section 26 ,
Twp 40 S. , Rge 25 E. ,
Tallahassee Base Meridian,
CHARLOTTE County(s), Florida.



MONUMENTATION DESCRIPTION:

Describe original monument and accessories, or subsequent restoration. Give sources of information. (If no attempt was made to search for the original monument and accessories, this information is not necessary.)

Description of corner evidence found:

8"X8" CONCRETE MONUMENT

State method(s) to determine corner location (lost corners only):

HORIZONTAL POSITION INFORMATION (if determined):

Latitude 26°57'38.34895" N Longitude 81°47'35.114" W
Y(Northing) 291061.284 m X(Easting) 220536.526 m Zone FL. W.
Convergence 0°05'37.609" Scale factor 0.99994638

Coordinate determination (circle one): Field traverse GPS

Horizontal datum (circle one): NAD27 NAD83(1986) NAD83(1990) other (explain)

Order of accuracy as defined in "Standards and Specifications for Geodetic Control Networks" published by the Federal Geodetic Control Committee (circle one):
1st, 2nd, 3rd, class _____ ,

or Minimum Technical Standards (Chapter 21HH-6, F.A.C.) ratio of closure for field data (example 1:10,000), _____ . This does not specify an order of accuracy.

Control point(s) used for survey: CHARLOTTE COUNTY HORIZONTAL CONTROL NETWORK INCLUDES HAYOLINE 2, PLACIDA 2, W260, PUNTPORT, 4 FLGPS 58 AS B ORDER STATIONS.

Comments:

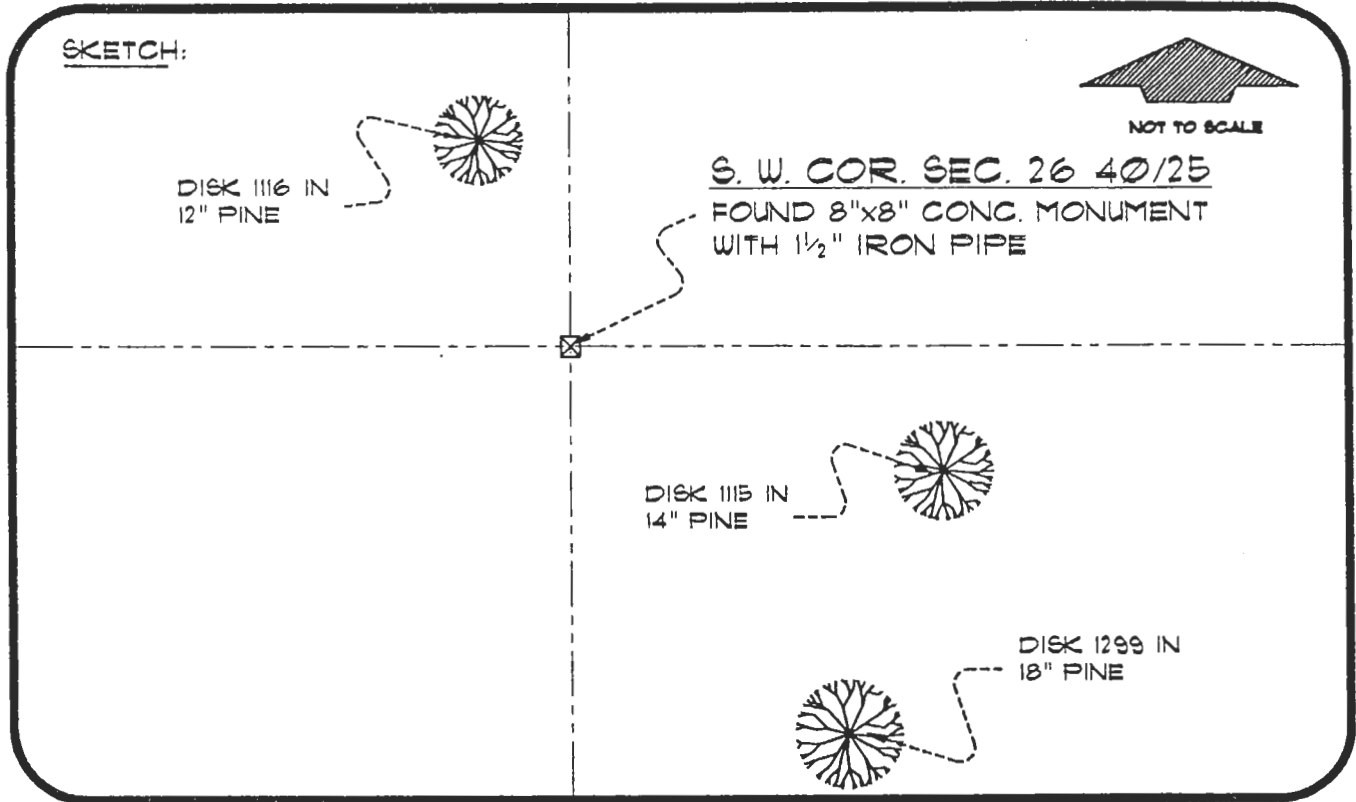
RECEIVED
MAR 21 1996
SURVEY & MAPPING

055756

4025V17

DOC. #

SKETCH:



S. W. COR. SEC. 26 40/25
 FOUND 8"x8" CONC. MONUMENT
 WITH 1/2" IRON PIPE

BASIS OF BEARING SOLAR OBSERVATION

REFER: FB 307/46

REFERENCE MEASUREMENTS

<u>Description</u>	<u>Bearing</u>	<u>Distance</u>
DISK 1116 IN 12" PINE	N 13°36'50" W	65.49'
DISK 1115 IN 14" PINE	S 77°24'02" E	131.02'
DISK 1299 IN 18" PINE	S 28°12'10" E	199.25'

SURVEYORS CERTIFICATE: I certify the monument and accessories indicated above
 were field located on MARCH 20, 1995

R. Rose
 SIGNATURE

PLS 4260

MARCH 11, 1996
DATE

CHARLOTTE COUNTY SURVEY DEPT.
FIRM OR AGENCY

7000 FLORIDA STREET
ADDRESS

PUNTA GORDA, FLA. 33950
CITY STATE

507



Completeness checked by: *B. Hunt*

Accepted and filed: *4-1-96*

BLM - I.D. 34272635 Date
 D.E.P. USE ONLY

SEND TO:

Department of Environmental Protection
 Bureau of Survey and Mapping
 3900 Commonwealth Boulevard
 Mail Station 105
 Tallahassee, Florida 32399