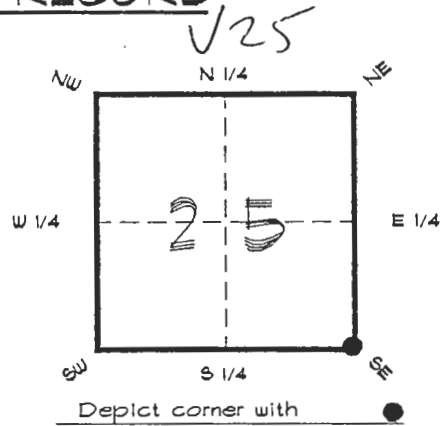


FLORIDA DEPARTMENT OF ENVIRONMENTAL PROTECTION
CERTIFIED CORNER RECORD

CORNER DESCRIPTION:

S. E. corner of Section 25
Twp 40 S., Rge 25 E.,
Tallahassee Base Meridian,
CHARLOTTE County(s), Florida.



MONUMENTATION DESCRIPTION:

Describe original monument and accessories, or subsequent restoration. Give sources of information. (If no attempt was made to search for the original monument and accessories, this information is not necessary.)

Description of corner evidence found:
60d NAIL 0.3' BELOW ASPHALT

State method(s) to determine corner location (lost corners only):

RECEIVED
JUL 25 1996
SURVEY & MAPPING

HORIZONTAL POSITION INFORMATION (if determined):

Latitude 26°57'37.62273" N Longitude 81°45'38.59136" W
Y(Northing) 291044.617 m X(Easting) 223756.674 m Zone FLW
Convergence 0°06'30.543" Scale factor 0.99994814

Coordinate determination (circle one): Field traverse GPS

Horizontal datum (circle one): NAD27 NAD83(1986) NAD83(1990) other (explain)

Order of accuracy as defined in Standards and Specifications for Geodetic Control Networks published by the Federal Geodetic Control Committee (circle one):
1st, 2nd, 3rd class 1

or Minimum Technical Standards (Chapter 6G17, F.A.C.) ratio of closure for field data (example 1:10,000), _____ . This does not specify an order of accuracy.

Control point(s) used for survey: CHARLOTTE COUNTY HORIZONTAL CONTROL NETWORK INCLUDES HAYOLINE 2, PLACIDA 2, W260, PUNTPORT, & FLGPS 5B AS B ORDER STATIONS.

Comments:

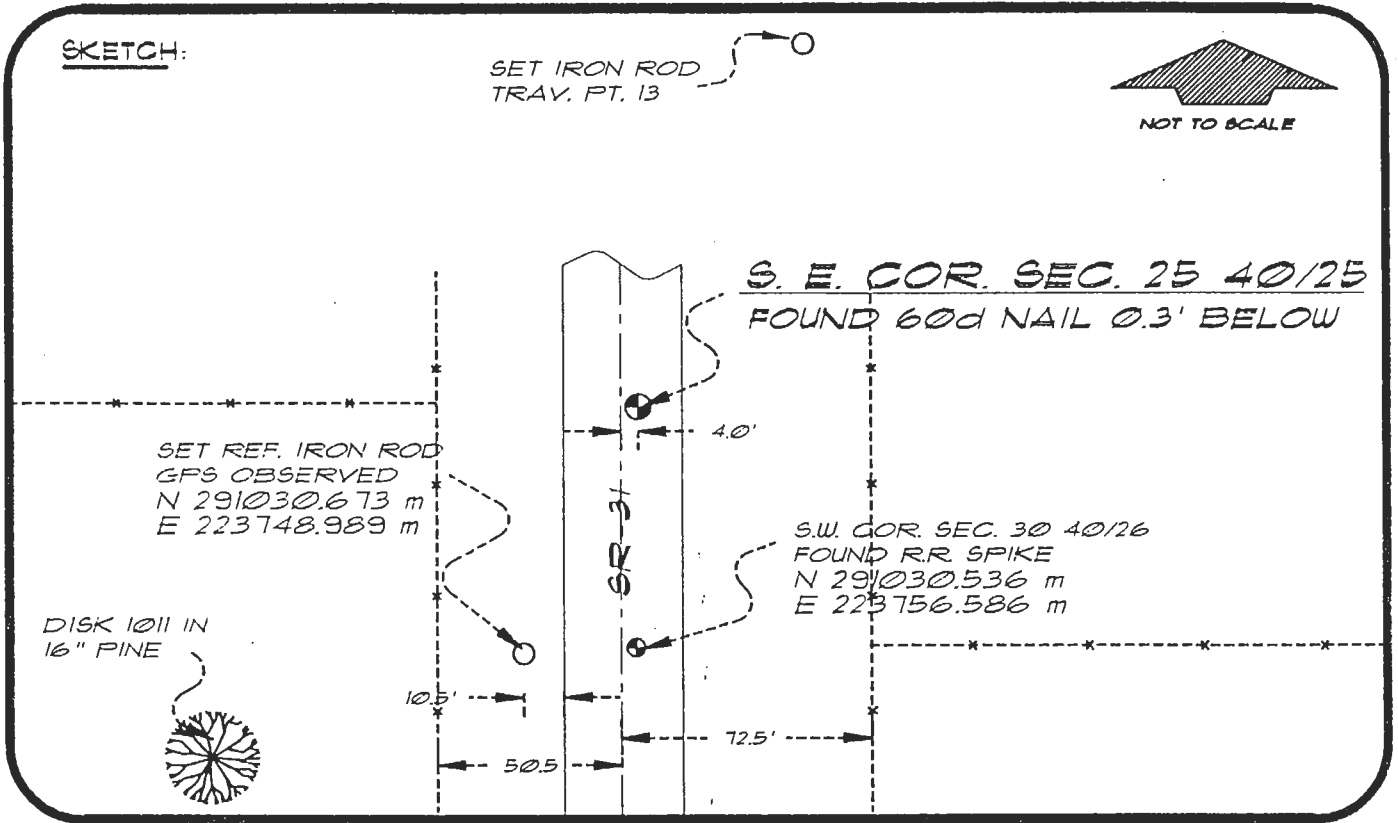
056815

4025V25

DOC. #

SKETCH:

SET IRON ROD
TRAV. PT. 13



BASIS OF BEARING SOLAR OBSERVATION REFER: FB 307/22

REFERENCE MEASUREMENTS

Description	Bearing	Distance
DISK 1011 IN 16" PINE	S 47°59'58" W	101.27'
TRAV. PT. 13	N 02°40'04" E	479.14'
S.W. COR. SEC. 30 40/26	S 00°28'03" W	46.20'
SET REF. IRON ROD	S 28°58'09" W	52.24'

SURVEYORS CERTIFICATE: I certify the monument and accessories indicated above were field located on AUGUST 9, 1994

R. Rose

FLS 4260

SIGNATURE

JULY 16, 1996

DATE

CHARLOTTE COUNTY SURVEY DEPT.

FIRM OR AGENCY

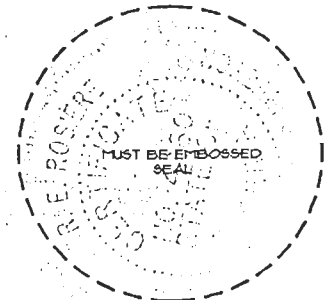
1000 FLORIDA STREET

ADDRESS

PUNTA GORDA, FLORIDA 33950

CITY

STATE



507

Completeness checked by: *PC*

Accepted and filed: 8-1-96 Date

BLM. - ID. 36250000 D.E.P. USE ONLY

SEND TO:

Department of Environmental Protection
Bureau of Survey and Mapping
3900 Commonwealth Boulevard
Mail Station 105
Tallahassee, Florida 32399