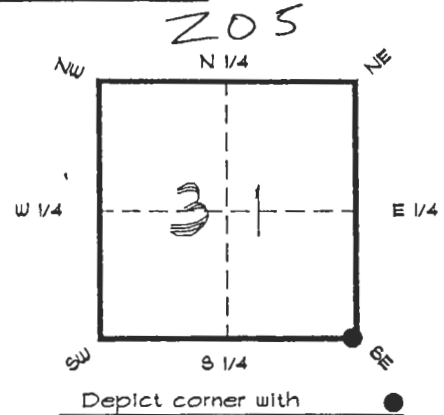


4025Z05

FLORIDA DEPARTMENT OF ENVIRONMENTAL PROTECTION
CERTIFIED CORNER RECORD

CORNER DESCRIPTION:

S. E. corner of Section 31 ,
Twp 40 S. , Rge 25 E. ,
Tallahassee Base Meridian,
CHARLOTTE County(s), Florida.



MONUMENTATION DESCRIPTION:

Describe original monument and accessories, or subsequent restoration. Give sources of information. (If no attempt was made to search for the original monument and accessories, this information is not necessary.)

Description of corner evidence found:
R.R. SPIKE WITH X ON SURFACE

State method(s) to determine corner location (lost corners only):

HORIZONTAL POSITION INFORMATION (if determined):

Latitude 26°56'46.77040" N Longitude 81°50'33.67258" W

Y(Northing) 289466.775 m X(Easting) 215620.601 m Zone FLW

Convergence 0°04'16.635" Scale factor 0.99994419

Coordinate determination (circle one): Field traverse GPS

Horizontal datum (circle one): NAD27 NAD83(1986) NAD83(1990) other (explain)

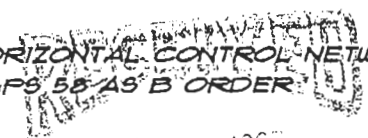
Order of accuracy as defined in Standards and Specifications for Geodetic Control Networks published by the Federal Geodetic Control Committee (circle one):

1st, 2nd, 3rd class _____

or Minimum Technical Standards (Chapter 61G17, F.A.C.) ratio of closure for field data (example 1:10,000), _____ . This does not specify an order of accuracy.

Control point(s) used for survey: CHARLOTTE COUNTY HORIZONTAL CONTROL NETWORK INCLUDES HAYOLINE 2, FLACIDA 2, W260, FUNTPORT, & FLGPS 55 AS B ORDER STATIONS.

Comments:



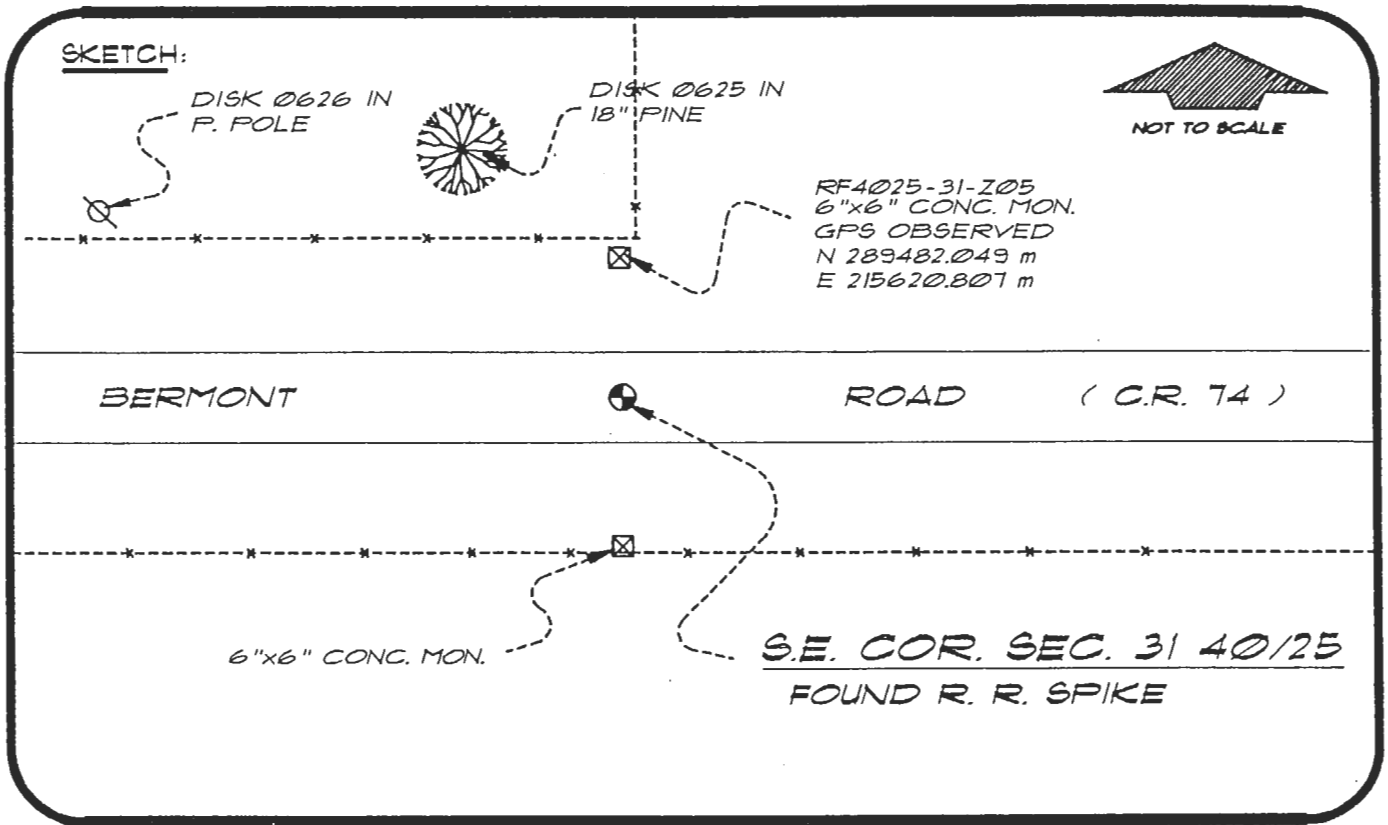
JUN 30 1997

SURVEY & MAPPING

059853

4025Z05

DOC. #



BASIS OF BEARING SOLAR OBSERVATION

REFER: FB 307/04

REFERENCE MEASUREMENTS

Description	Bearing	Distance
DISK 0626 IN P. POLE	N 63°31'14" W	138.39'
DISK 0625 IN 18" PINE	N 24°24'16" W	82.64'
6"x6" CONC. MON.	S 00°40'29" W	50.04'
6"x6" CONC. MON.	N 00°50'41" E	50.12'

SURVEYORS CERTIFICATE: I certify the monument and accessories indicated above were field located on JUNE 27, 1994

R. Rose

PLS 4260

SIGNATURE

JULY 30, 1996

DATE

CHARLOTTE COUNTY SURVEY DEPT.

FIRM OR AGENCY

7000 FLORIDA STREET

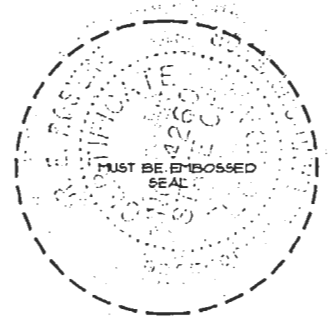
ADDRESS

PUNTA GORDA, FLORIDA 33950

CITY

STATE

507



Completeness checked by: *[Signature]*

Accepted and filed: 7-1-97 Date

BLM - ID. 06313205 D.E.P. USE ONLY

SEND TO:

Department of Environmental Protection
Bureau of Survey and Mapping
3900 Commonwealth Boulevard
Mail Station 105
Tallahassee, Florida 32399