

4025Z09

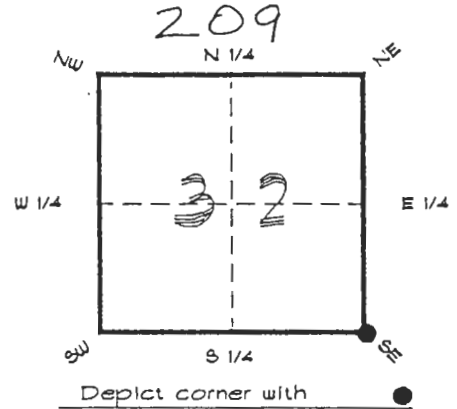
DOC. #

059854

FLORIDA DEPARTMENT OF ENVIRONMENTAL PROTECTION
CERTIFIED CORNER RECORD

CORNER DESCRIPTION:

S. E. corner of Section 32,
Twp 40 S., Rge 25 E.,
Tallahassee Base Meridian,
CHARLOTTE County(s), Florida.



MONUMENTATION DESCRIPTION:

Describe original monument and accessories, or subsequent restoration. Give sources of information. (If no attempt was made to search for the original monument and accessories, this information is not necessary.)

Description of corner evidence found:
RAILROAD SPIKE ON SURFACE

State method(s) to determine corner location (lost corners only):

HORIZONTAL POSITION INFORMATION (if determined):

Latitude 26°56'46.49783" N Longitude 81°49.78960" W
Y(Northing) 289460.512 m X(Easting) 217244.742 m Zone FLW
Convergence 0°04'43.318" Scale factor 0.99994485

Coordinate determination (circle one): Field traverse GPS

Horizontal datum (circle one): NAD27 NAD83(1986) NAD83(1990) other (explain)

Order of accuracy as defined in Standards and Specifications for Geodetic Control Networks published by the Federal Geodetic Control Committee (circle one):
1st, 2nd, 3rd class

or Minimum Technical Standards (Chapter 6K17, F.A.C.) ratio of closure for field data (example 1:10,000), _____ . This does not specify an order of accuracy.

Control point(s) used for survey: CHARLOTTE COUNTY HORIZONTAL CONTROL NETWORK INCLUDES HAYOLINE 2, PLACIDA 2, W260, PUNTPORT, 4 FLGPS 58 AS B ORDER STATIONS.

Comments:



JUN 3 0 12

SURVEY & MAPPING

SKETCH:



FDOT ROW CONC. MON.

RF4025-32-Z09
SET REF. IRON ROD
GPS OBSERVED
N 289467.607 m
E 217229.672 m

DISK 1005 IN P. POLE

CR-74

N 89°47'05" W
92.11' meas.
(91.77' FDOT)

BERMONT ROAD

80d NAIL AT P. I.

S. E. COR. SEC. 32 40/25
FOUND R. R. SPIKE

FDOT ROW CONC. MON.

BERMONT 4.1 MILES →

BASIS OF BEARING SOLAR OBSERVATION REFER: FB 307/19

REFERENCE MEASUREMENTS

Description	Bearing	Distance
DISK 1005 IN P. POLE	N 66°39'30" E	148.97'
FDOT ROW CONC. MON.	S 61°52'19" W	104.68'
FDOT ROW CONC. MON.	N 61°25'51" W	104.86'
SET REF. IRON ROD	N 64°42'31" W	54.65'

SURVEYORS CERTIFICATE: I certify the monument and accessories indicated above were field located on AUGUST 2, 1994

R. Rose
SIGNATURE

PLS 4260

AUGUST 20, 1996

DATE

CHARLOTTE COUNTY SURVEY DEPT.

FIRM OR AGENCY

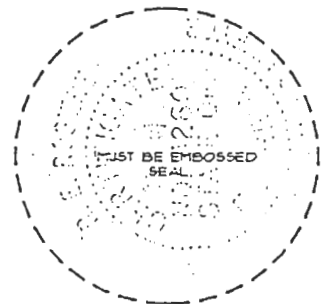
7000 FLORIDA STREET

ADDRESS

PUNTA GORDA, FLORIDA 33950

CITY

STATE



SEND TO:

Department of Environmental Protection
Bureau of Survey and Mapping
3900 Commonwealth Boulevard
Mail Station 105
Tallahassee, Florida 32399

Completeness checked by: *R. Rose*
Accepted and filed: 7-1-97 Date
BLM - ID. 05323304 D.E.P. USE ONLY