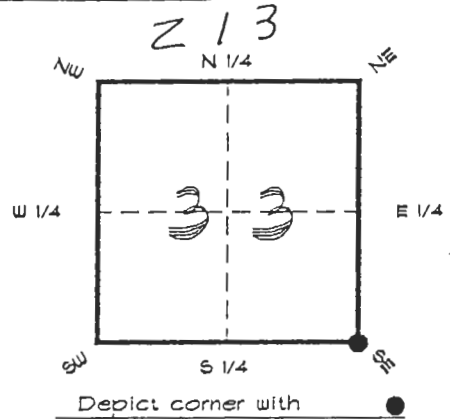


FLORIDA DEPARTMENT OF ENVIRONMENTAL PROTECTION
CERTIFIED CORNER RECORD

CORNER DESCRIPTION:

S. E. corner of Section 33,
Twp 40 S., Rge 25 E.,
Tallahassee Base Meridian,
CHARLOTTE County(s), Florida.



MONUMENTATION DESCRIPTION:

Describe original monument and accessories, or subsequent restoration. Give sources of information. (If no attempt was made to search for the original monument and accessories, this information is not necessary.)

Description of corner evidence found:

80d NAIL 0.4' BELOW SURFACE

State method(s) to determine corner location (lost corners only):

HORIZONTAL POSITION INFORMATION (if determined):

Latitude 26°56'46.27679" N Longitude 81°48'35.92978" W

Y(Northing) 289456.044 m X(Easting) 218868.245 m Zone FLW

Convergence 0°05'09.990" Scale factor 0.99994557

Coordinate determination (circle one): Field traverse GPS

Horizontal datum (circle one): NAD27 NAD83(1986) NAD83(1990) other (explain)

Order of accuracy as defined in Standards and Specifications for Geodetic Control Networks published by the Federal Geodetic Control Committee (circle one):

1st, 2nd, 3rd, class 1

or Minimum Technical Standards (Chapter 6IG17, F.A.C.) ratio of closure for field data (example 1:10,000), . This does not specify an order of accuracy.

Control point(s) used for survey: CHARLOTTE COUNTY HORIZONTAL CONTROL NETWORK INCLUDES HAYOLINE 2, FLACIDA 2, W260, FUNTPORT, 4 FLGPS 58 AS B ORDER STATIONS.

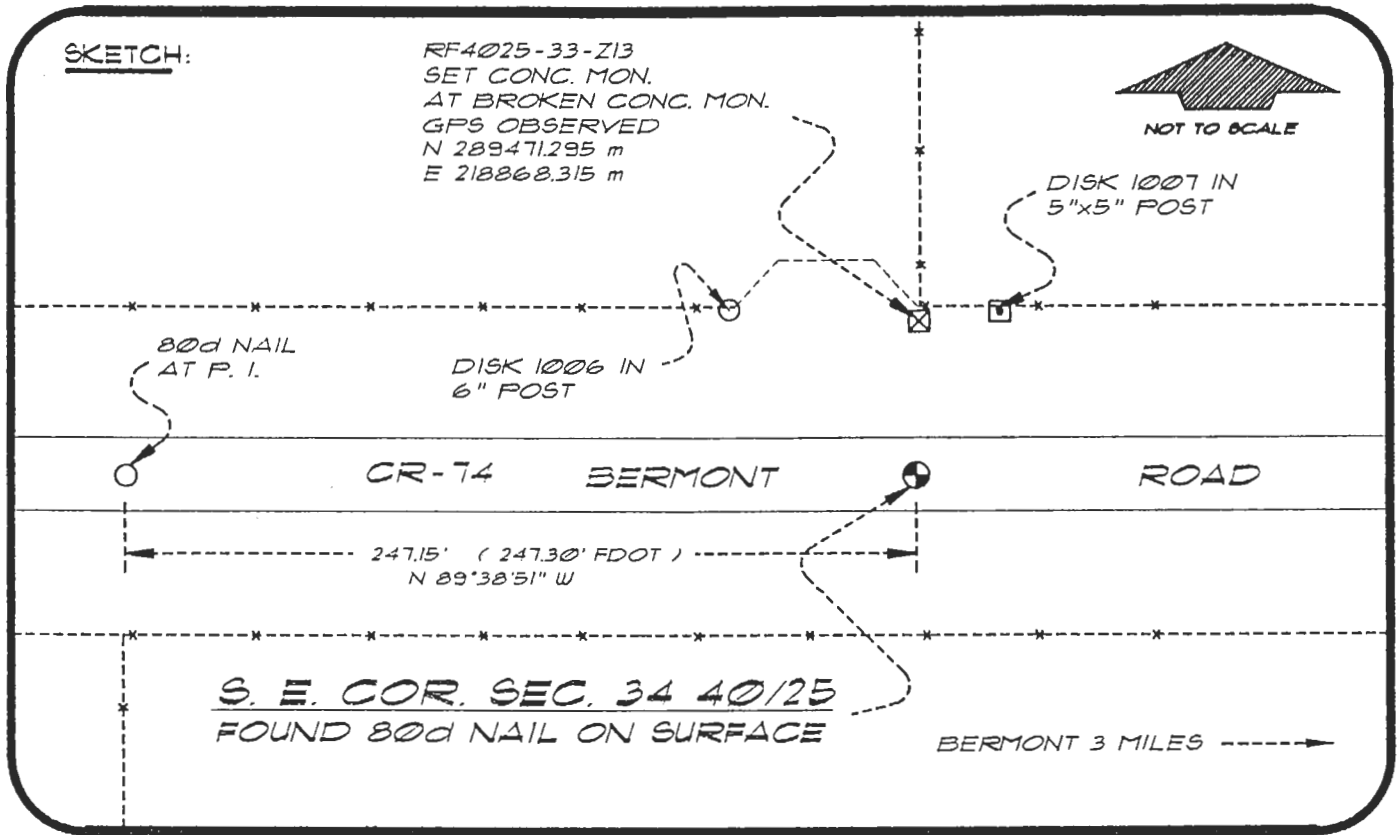
Comments:

RECEIVED
JUN 5 0 1997
SURVEY & MAPPING

059855

4025Z13

DOC. #



BASIS OF BEARING SOLAR OBSERVATION REFER: FB 307/20

REFERENCE MEASUREMENTS

Description	Bearing	Distance
DISK 1006 IN 6" POST	N 32°17'53" W	68.68'
DISK 1007 IN 5"x5" POST	N 08°18'15" E	50.98'
SET CONC. MON.	N 00°20'56" E	50.04'

SURVEYORS CERTIFICATE: I certify the monument and accessories indicated above were field located on AUGUST 3, 1994

R. R. Rose

FLS 4260

SIGNATURE

JULY 30, 1996

DATE

CHARLOTTE COUNTY SURVEY DEPT.

FIRM OR AGENCY

1000 FLORIDA STREET

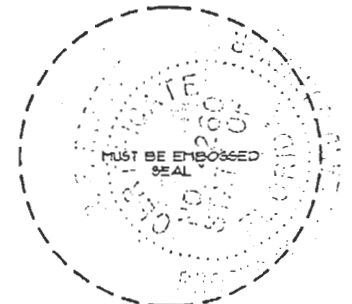
ADDRESS

PUNTA GORDA, FLORIDA 33950

CITY

STATE

507



SEND TO:

Department of Environmental Protection
Bureau of Survey and Mapping
3900 Commonwealth Boulevard
Mail Station 105
Tallahassee, Florida 32399

Completeness checked by: *[Signature]*

Accepted and filed: 7-1-97 Date

BLM. - ID. 04333403 D.E.P. USE ONLY