

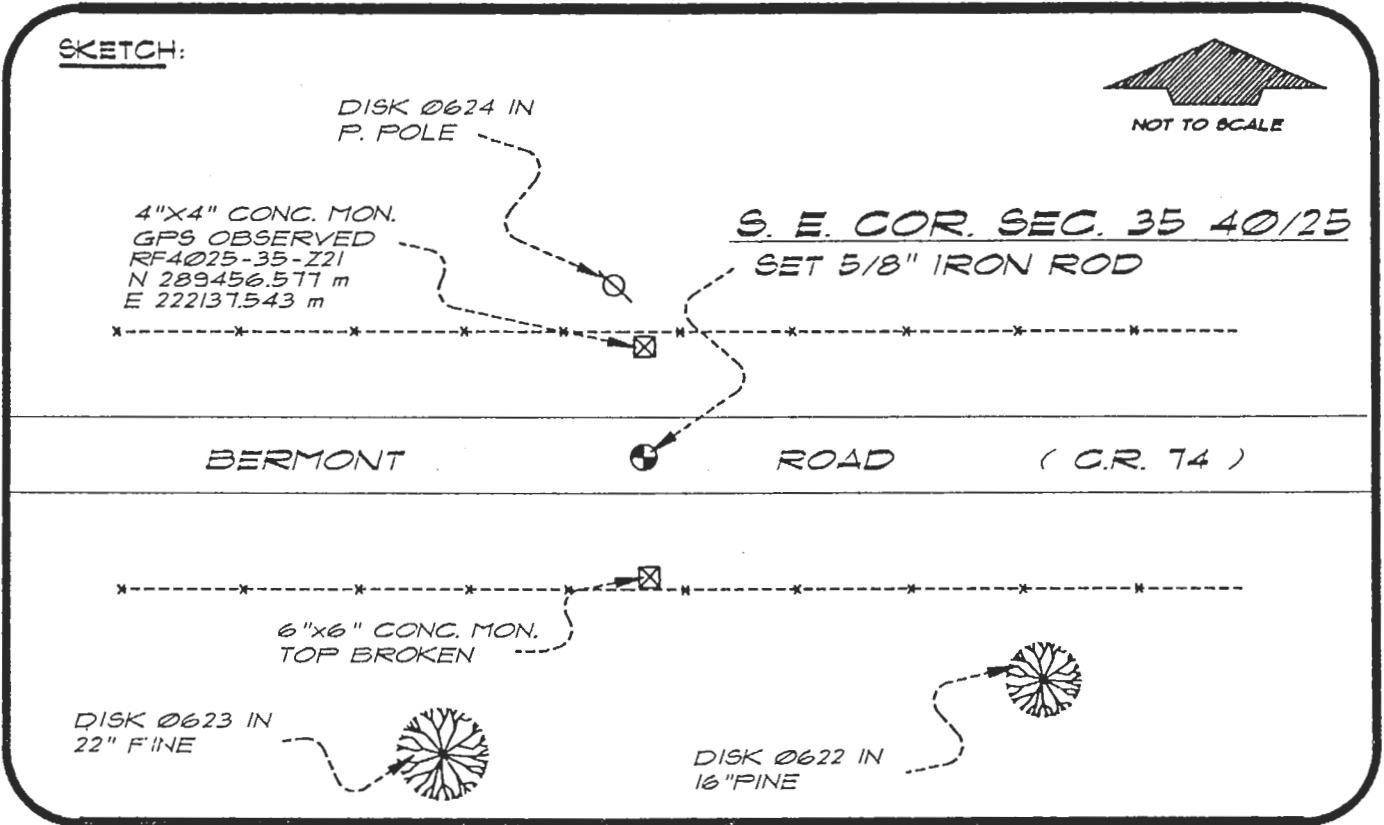


056816

4025Z21

DOC. #

SKETCH:



BASIS OF BEARING SOLAR OBSERVATION REFER: FB 307/03

REFERENCE MEASUREMENTS

<u>Description</u>	<u>Bearing</u>	<u>Distance</u>
DISK 0622 IN 16" PINE	S 55°25'32" E	137.73'
DISK 0623 IN 22" PINE	S 37°37'03" W	122.47'
DISK 0624 IN P. POLE	N 01°31'50" W	59.73'
6"x6" CONC. MON.	S 00°54'54" W	50.00'
4"x4" CONC. MON.	N 00°54'54" E	50.00'

SURVEYORS CERTIFICATE: I certify the monument and accessories indicated above were field located on JUNE 27, 1994

*Re Rose*  
SIGNATURE

FLS 4260

JULY 22, 1996

DATE

CHARLOTTE COUNTY SURVEY DEPT.

FIRM OR AGENCY

1000 FLORIDA STREET

ADDRESS

PUNTA GORDA, FLORIDA 33950

CITY

STATE

507



Completeness checked by: *Re Rose*

Accepted and filed: 8-1-96 Date

BLM. - I.D. 02353601 D.E.P. USE ONLY

SEND TO:

Department of Environmental Protection  
Bureau of Survey and Mapping  
3900 Commonwealth Boulevard  
Mail Station 105  
Tallahassee, Florida 32399