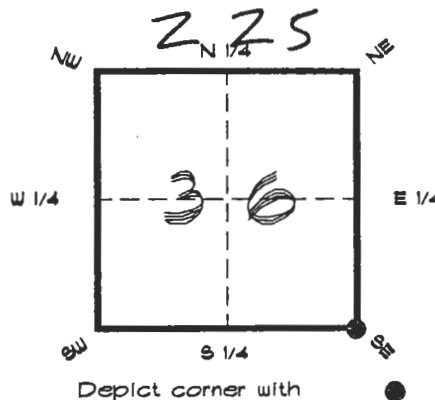


4025Z25

FLORIDA DEPARTMENT OF ENVIRONMENTAL PROTECTION
CERTIFIED CORNER RECORD

CORNER DESCRIPTION:

S. E. corner of Section 36,
Twp 40 S., Rge 25 E.,
Tallahassee Base Meridian,
CHARLOTTE County(s), Florida.



MONUMENTATION DESCRIPTION:

Describe original monument and accessories, or subsequent restoration. Give sources of information. (If no attempt was made to search for the original monument and accessories, this information is not necessary.)

Description of corner evidence found:

1 1/2" AXLE

State method(s) to determine corner location (lost corners only):

HORIZONTAL POSITION INFORMATION (if determined):

Latitude 26°56'45.21455" N Longitude 81°45'39.04300" W
Y(Northing) 289431.632 m X(Easting) 223747.270 m Zone FLW
Convergence 0°06'30.144" Scale factor 0.99994814

Coordinate determination (circle one): Field traverse GPS

Horizontal datum (circle one): NAD27 NAD83(1986) NAD83(1990) other (explain)

Order of accuracy as defined in Standards and Specifications for Geodetic Control Networks published by the Federal Geodetic Control Committee (circle one):

1st, 2nd, 3rd class

or Minimum Technical Standards (Chapter 6IG17, F.A.C.) ratio of closure for field data (example 1:10,000), _____ . This does not specify an order of accuracy.

Control point(s) used for survey: CHARLOTTE COUNTY HORIZONTAL CONTROL NETWORK INCLUDES HAVOLINE 2, PLACIDA 2, W260, PUNTPORT, 4 FLGPS, 52 GAB ORDER STATIONS.

Comments:

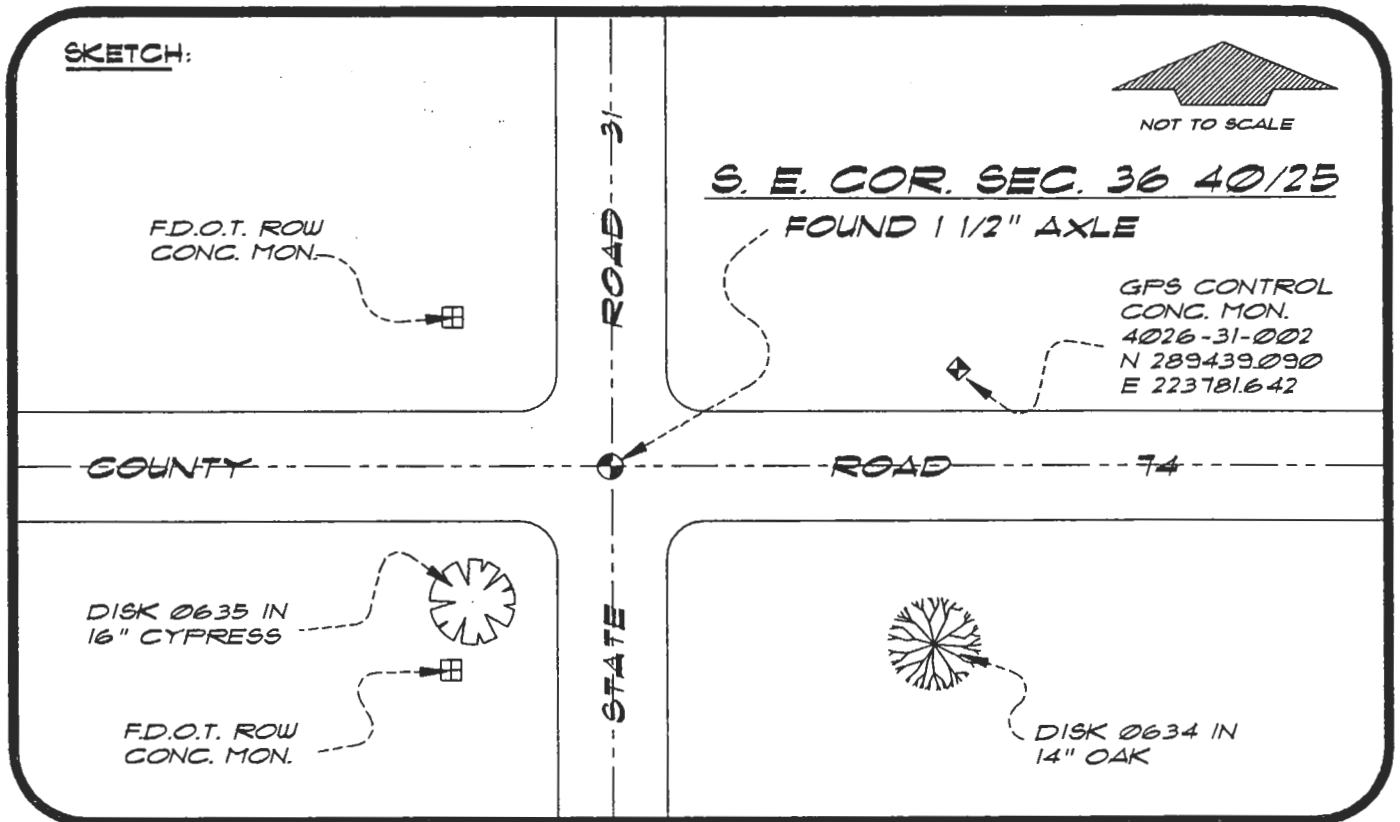
RECEIVED

AUG 8 1994

SURVEY & MAPPING

4025Z25

DOC. #



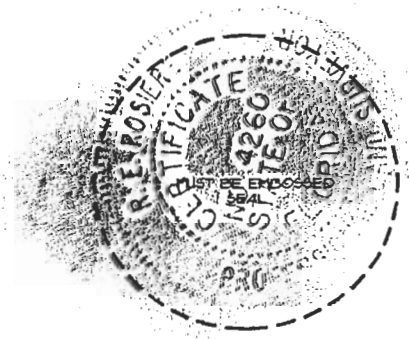
BASIS OF BEARING SOLAR OBSERVATION REFER: FB 307/08

REFERENCE MEASUREMENTS

Description	Bearing	Distance
FDOT ROW CONC. MON.	S 32°37'12" W	94.14'
FDOT ROW CONC. MON.	N 45°08'18" W	71.45'
DISK 0634 IN 14" OAK	S 59°19'44" E	108.53'
DISK 0635 IN 16" CYPRESS	S 43°39'13" W	84.15'
GPS CONTROL CONC. MON.	N 77°51'50" E	115.40'

SURVEYORS CERTIFICATE: I certify the monument and accessories indicated above were field located on JULY 19, 1994

R. P. Ross PLS 4260
 SIGNATURE
August 4, 1994
 DATE
CHARLOTTE COUNTY SURVEY DEPT.
 FIRM OR AGENCY
7000 FLORIDA STREET
 ADDRESS
PUNTA GORDA, FLORIDA 33950
 CITY STATE



507

Completeness checked by: B. Jinton
 Accepted and filed: 9-1-94 Date
 BLM. - ID. 01263106 D.E.P. USE ONLY

SEND TO:
 Department of Environmental Protection
 Bureau of Survey and Mapping
 3900 Commonwealth Boulevard
 Mail Station 105
 Tallahassee, Florida 32399