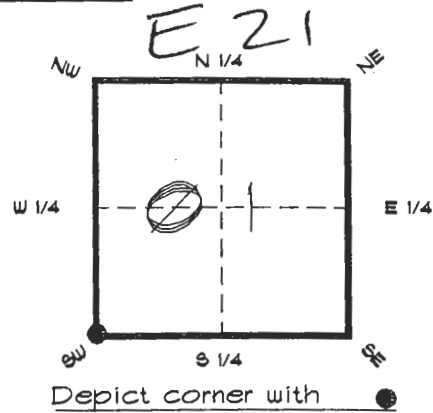


FLORIDA DEPARTMENT OF ENVIRONMENTAL PROTECTION
CERTIFIED CORNER RECORD

CORNER DESCRIPTION:

S. W. corner of Section 01 ,
Twp 40 S. , Rge 26 E. ,
Tallahassee Base Meridian,
CHARLOTTE County(s), Florida.



MONUMENTATION DESCRIPTION:

Describe original monument and accessories, or subsequent restoration. Give sources of information. (If no attempt was made to search for the original monument and accessories, this information is not necessary.)

Description of corner evidence found:

G.L.O. BRASS DISK, SET WELL AROUND POINT

State method(s) to determine corner location (lost corners only):

HORIZONTAL POSITION INFORMATION (if determined):

Latitude 27°01'06.01030" N Longitude 81°40'47.34006" W

Y(Northing) 297475.979 m X(Easting) 231772.833 m Zone FLW

Convergence 0°08'43.630" Scale factor 0.99995363

Coordinate determination (circle one): Field traverse GPS

Horizontal datum (circle one): NAD27 NAD83(1986) NAD83(1990) other (explain)

Order of accuracy as defined in "Standards and Specifications for Geodetic Control Networks" published by the Federal Geodetic Control Committee (circle one):
1st, 2nd, 3rd class 1 ,

or Minimum Technical Standards (Chapter 21HH-6, F.A.C.) ratio of closure for field data (example 1:10,000), _____ . This does not specify an order of accuracy.

Control point(s) used for survey: CHARLOTTE COUNTY HORIZONTAL CONTROL NETWORK INCLUDES HAVOLINE 2, PLACIDA 2, W260, PUNTPORT, 4 FLGPS 58 AS B ORDER STATIONS.

Comments:

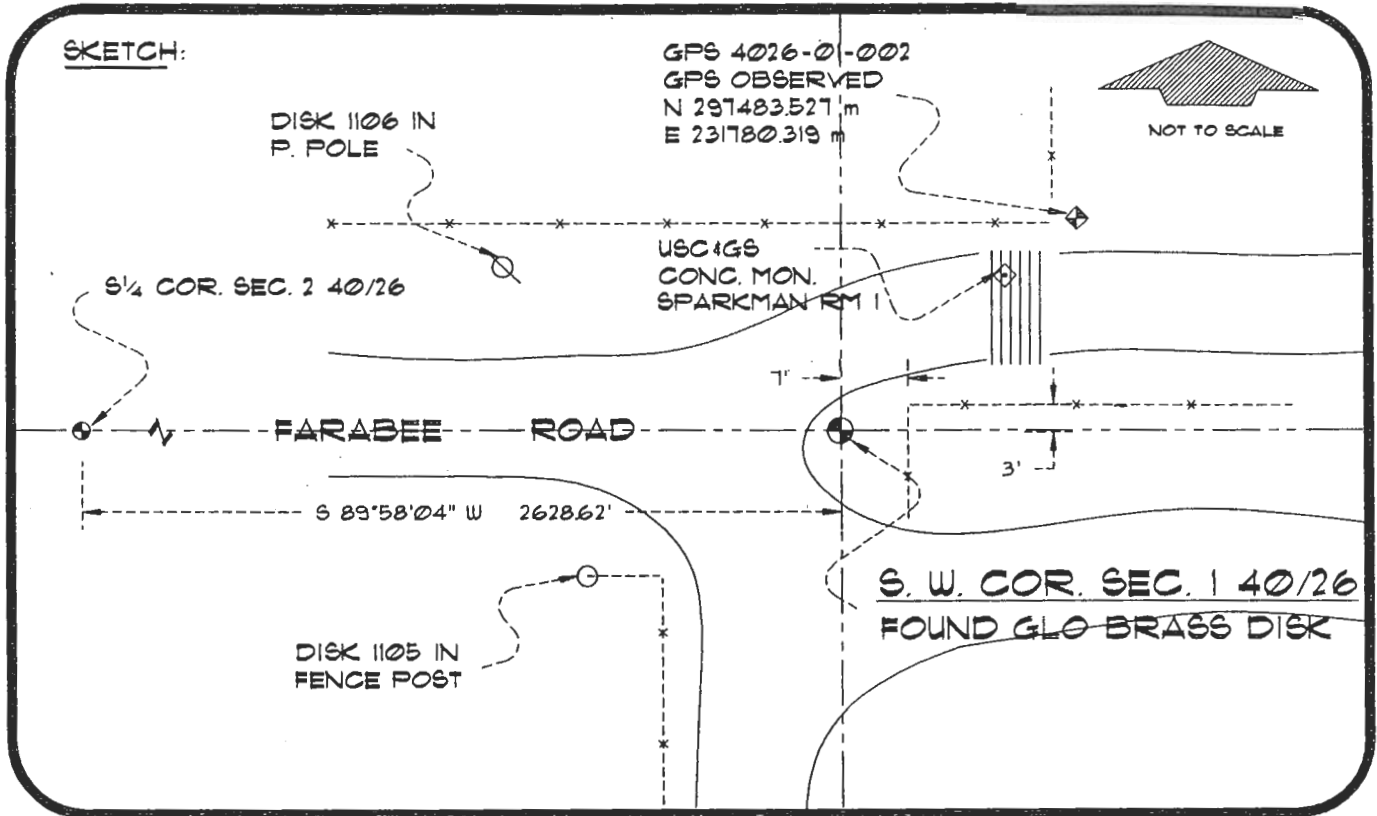


DEC 27 1994

4026E21

DOC. #

0050499



BASIS OF BEARING SOLAR OBSERVATION

REFER FB: 310/13

SET SURVEY MARKER POST 3' E'LY

REFERENCE MEASUREMENTS

Description	Bearing	Distance
DISK 1106 IN P. POLE	N 41°43'37" W	25.36'
DISK 1105 IN FENCE POST	S 54°55'44" W	29.54'
U.S.C.&G.S. CONC. MON.	N 51°44'06" E	28.79'
GPS 4026-01-002	N 44°54'40" E	34.88'

SURVEYORS CERTIFICATE: I certify the monument and accessories indicated above were field located on NOVEMBER 29, 1994

R. P. Ross

PLS 4260

SIGNATURE

December 20, 1994

DATE

CHARLOTTE COUNTY SURVEY DEPT.

FIRM OR AGENCY

1000 FLORIDA STREET

ADDRESS

PUNTA GORDA, FLA. 33950

CITY

STATE

544



Completeness checked by: *[Signature]*

Accepted and filed: 01-95 Date

BLM. - ID. 11022112 DNR USE ONLY

SEND TO:

Department of Environmental Protection
Bureau of Survey and Mapping
3900 Commonwealth Boulevard
Mail Station 105
Tallahassee, Florida 32399