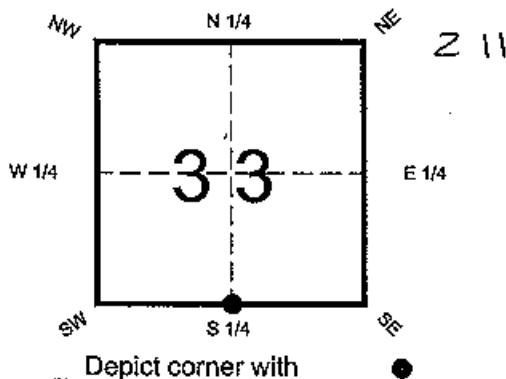


FLORIDA DEPARTMENT OF ENVIRONMENTAL PROTECTION
CERTIFIED CORNER RECORD

CORNER DESCRIPTION:

S. 1/4 corner of Section 33 ,
Twp 40 S. , Rge 26 E. ,
Tallahassee Base Meridian,
CHARLOTTE County(s), Florida

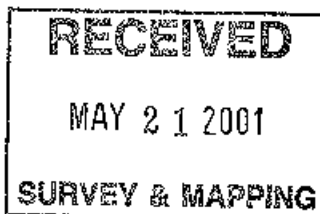


MONUMENTATION DESCRIPTION:

Describe original monument and accessories, or subsequent restoration. Give sources of information. (If no attempt was made to search for the original monument and accessories, this information is not necessary.)

Description of corner evidence found:

SET CONCRETE MONUMENT



State method(s) to determine corner location (lost corners only):

SINGLE PROPORTION FROM S. G. O. MAP OF TOWNSHIP SURVEY BY JOEL A. BARBER IN 1905

HORIZONTAL POSITION INFORMATION (if determined):

Latitude 26°56'44.13830" N Longitude 81°43'12.87456" W
Y(Northing) 289406.782 m X(Easting) 227779.039 m Zone Fl.W
Convergence -0°07'36.4" Scale factor 0.9995070

Coordinate determination (circle one): Field traverse **GPS**

Horizontal datum NAD83(1990)

Order of accuracy as defined in Standards and Specifications for Geodetic Control Networks published by the Federal Geodetic Control Committee (circle one):
1st, 2nd, 3rd, class 1 ,

or Minimum Technical Standards (Chapter 21HH-6, F.A.C.) ratio of closure for field data (example 1:10,000), _____ . This does not specify an order of accuracy.

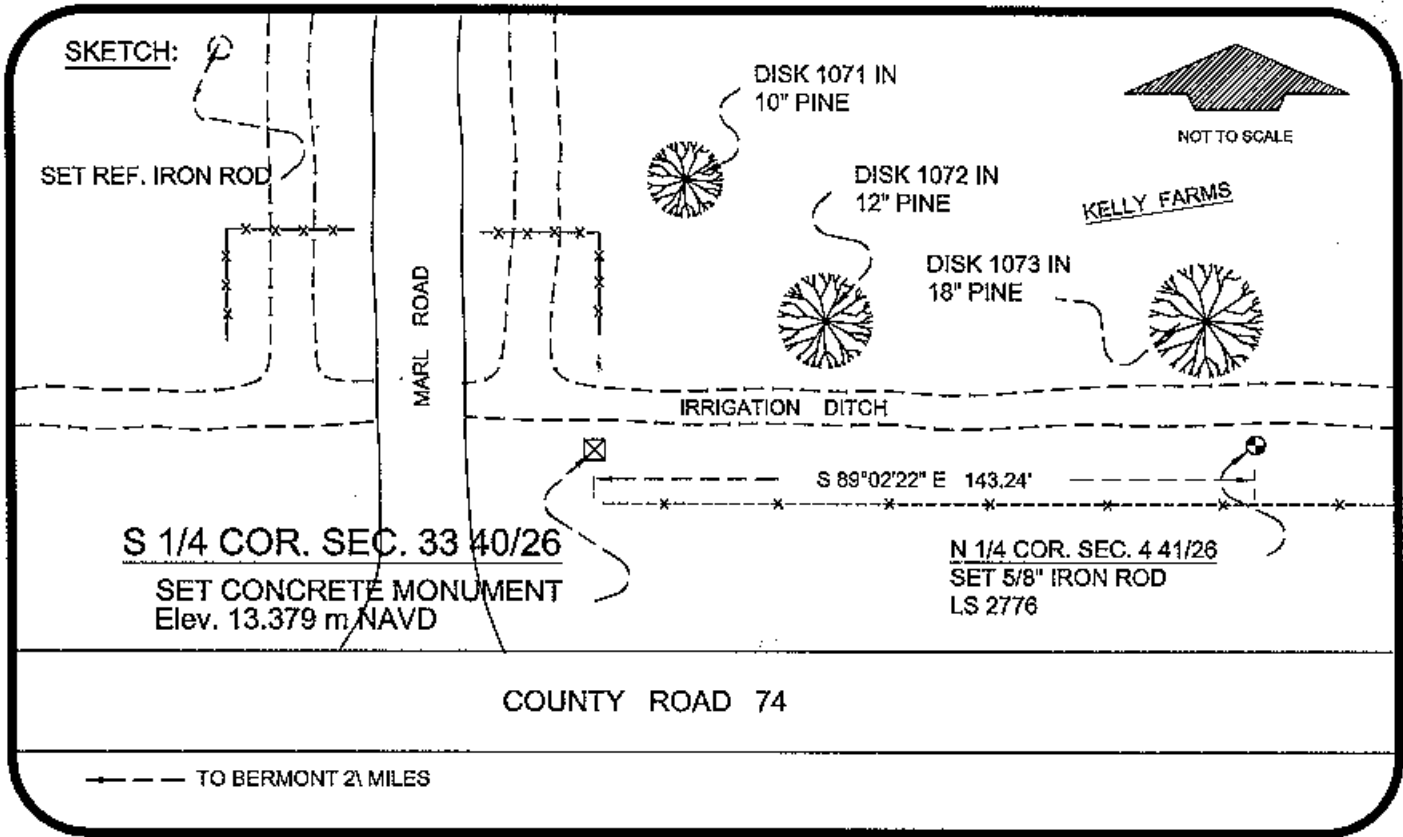
Control point(s) used for survey: CHARLOTTE COUNTY HORIZONTAL CONTROL NETWORK INCLUDES HAVOLINE 2, PLACIDA 2, W260, PUNTPORT, & FLGPS 58 AS B ORDER STATIONS.

Comments:

4026Z11

DOC. #

071670



BASIS OF BEARING SOLAR OBSERVATION REFER: FB 310/27

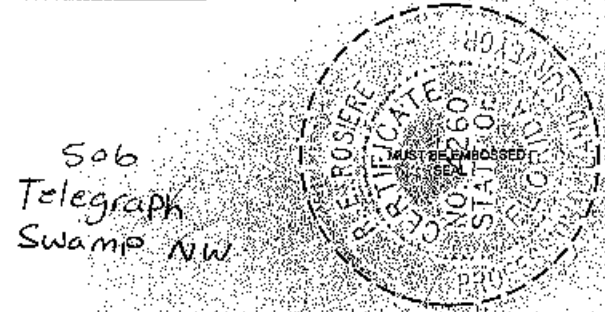
Elevations are GPS derived orthometric height (GEOID96) NAVD in meters.

REFERENCE MEASUREMENTS

Description	Bearing	Distance
DISK 1071 IN 10" PINE	N 19°46'50" E	55.07'
DISK 1072 IN 12" PINE	N 63°52'58" E	46.42'
DISK 1073 IN 18" PINE	N 80°44'15" E	141.34'
SET REF. IRON ROD	N 23°24'28" W	141.34'

SURVEYORS CERTIFICATE: I certify the monument and accessories indicated above were field located on OCTOBER 21, 2000

R. P. Rose PLS 4260
 SIGNATURE
FEBRUARY 15, 2001
 DATE
 CHARLOTTE COUNTY SURVEY DEPT.
 FIRM OR AGENCY
 7000 FLORIDA STREET
 ADDRESS
 PUNTA GORDA, FLA. 33950
 CITY STATE



Completeness checked by: CS
 Accepted and filed: 6-1-01
 Date
 B.L.M.-I.D. 340100 D.N.R. USE ONLY

SEND TO:
 Department of Environmental Protection
 Bureau of Survey and Mapping
 3900 Commonwealth Boulevard
 Mall Station 105
 Tallahassee, Florida 32399