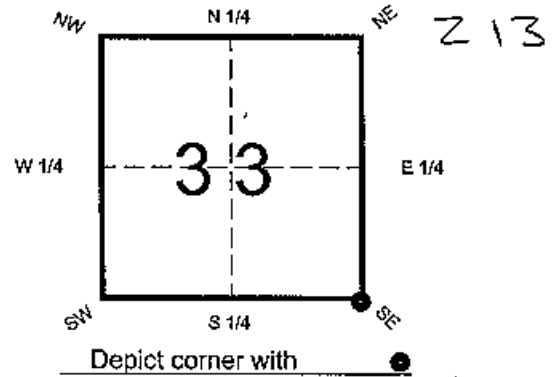


FLORIDA DEPARTMENT OF ENVIRONMENTAL PROTECTION  
CERTIFIED CORNER RECORD

CORNER DESCRIPTION:

S. E. corner of Section 33 ,  
Twp 40 S. , Rge 26 E. ,  
Tallahassee Base Meridian,  
CHARLOTTE County(s), Florida



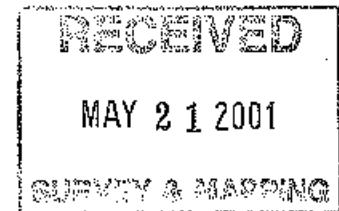
MONUMENTATION DESCRIPTION:

Describe original monument and accessories, or subsequent restoration. Give sources of information. (if no attempt was made to search for the original monument and accessories, this information is not necessary.)

Description of corner evidence found:

RAILROAD SPIKE IN CENTER LINE C. R. 74

State method(s) to determine corner location (lost corners only):



HORIZONTAL POSITION INFORMATION ( if determined ):

Latitude 26°56'44.01642" N Longitude 81°42'43.66315" W  
Y(Northing) 289404.839 m X(Easting) 228584.775 m Zone Fl. W  
Convergence -0°07'50.25' Scale factor 0.99995129

Coordinate determination (circle one):

Field traverse      GPS

Horizontal datum ( NAD83(1990)

Order of accuracy as defined in Standards and Specifications for Geodetic Control Networks published by the Federal Geodetic Control Committee (circle one):

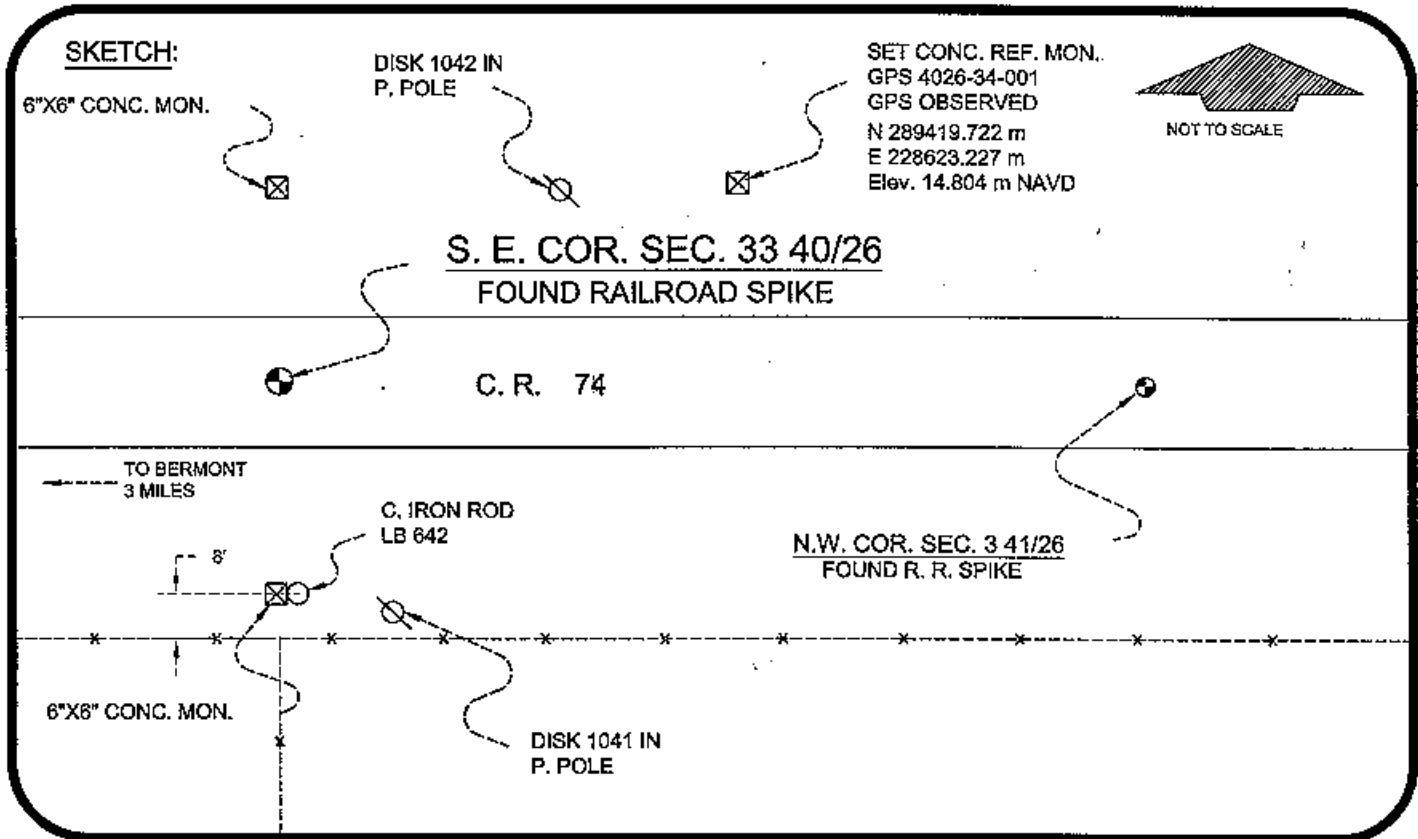
1st, 2nd, 3rd class 1 ,

or Minimum Technical Standards (Chapter 21HH-6, F.A.C.) ratio of closure for field data (example 1:10,000), \_\_\_\_\_ . This does not specify an order of accuracy.

Control point(s) used for survey:

CHARLOTTE COUNTY HORIZONTAL CONTROL NETWORK  
INCLUDES HAVOLINE 2, PLACIDA 2, W260, PUNTPORT, & FLGPS 58 AS B ORDER STATIONS.

Comments:



**BASIS OF BEARING SOLAR OBSERVATION**      **REFER: FB 310/29**  
 Elevations are GPS derived orthometric height (GEOID96) NAVD in meters.  
REFERENCE MEASUREMENTS

Description	Bearing	Distance
C. IRON ROD LB 642	S 00°05'54" W	50.00'
6"x6" CONC. MONUMENT	S 00°33'18" W	50.19'
6"x6" CONC. MONUMENT	N 00°18'35" E	49.99'
DISK 1041 IN P. POLE	S 13°58'51" E	56.99'
DISK 1042 IN P. POLE	N 59°33'51" E	98.87'
N. W. COR. SEC. 3 41/26	S 89°53'01" E	244.91'
GPS 4026-34-001	N 68°42'34" E	135.28'
	N 68°50'24" E	41.231 m grid

SURVEYORS CERTIFICATE:      I certify the monument and accessories indicated above  
 were field located on      March 29, 2000

*R. Rose*      PLS 4260  
 SIGNATURE

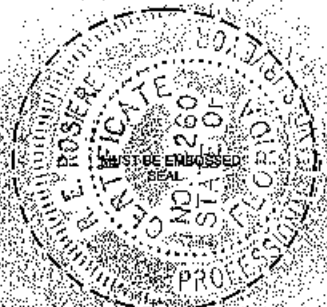
DATE      December 9, 2000

FIRM OR AGENCY      CHARLOTTE COUNTY SURVEY DEPT.

ADDRESS      7000 FLORIDA STREET

CITY      PUNTA GORDA, FLA. 33950      STATE

*506  
 Telegraph  
 Swamp NW*



Completeness checked by:      CS

Accepted and filed:      6-1-01      Date

B.L.M. -I.D.      400100      D.N.R. USE ONLY

**SEND TO:**  
 Department of Environmental Protection  
 Bureau of Survey and Mapping  
 3900 Commonwealth Boulevard  
 Mail Station 105  
 Tallahassee, Florida 32399