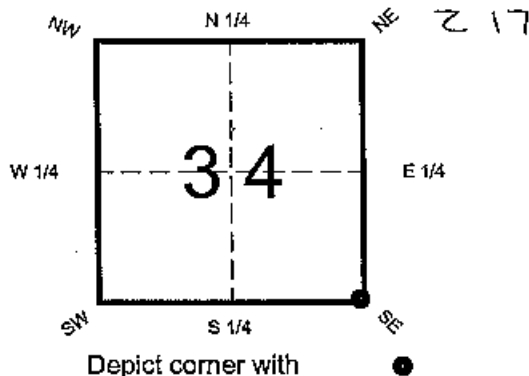


FLORIDA DEPARTMENT OF ENVIRONMENTAL PROTECTION CERTIFIED CORNER RECORD

CORNER DESCRIPTION:

S. E. corner of Section 34 ,
Twp 40 S. , Rge 26 E. ,
Tallahassee Base Meridian,
CHARLOTTE County(s), Florida .



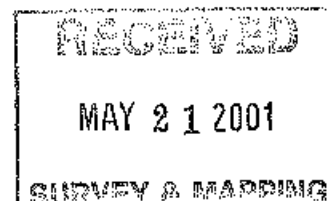
MONUMENTATION DESCRIPTION:

Describe original monument and accessories, or subsequent restoration. Give sources of information. (If no attempt was made to search for the original monument and accessories, this information is not necessary.)

Description of corner evidence found:

80d NAIL IN CENTER C. R. 74

State method(s) to determine corner location (lost corners only):



HORIZONTAL POSITION INFORMATION (if determined):

Latitude 26°56'43.90382" N Longitude 81°41'45.28497" W
Y(Northing) 289405.143 m X(Easting) 230195.009 m Zone FLW
Convergence -0°08'16.82" Scale factor 0.99995246

Coordinate determination (circle one):

Field traverse

GPS

Horizontal datum NAD83(1990)

Order of accuracy as defined in Standards and Specifications for Geodetic Control Networks published by the Federal Geodetic Control Committee (circle one):

1st, 2nd, 3rd class 1 ,

or Minimum Technical Standards (Chapter 21HH-6, F.A.C.) ratio of closure for field data (example 1:10,000), _____ . This does not specify an order of accuracy.

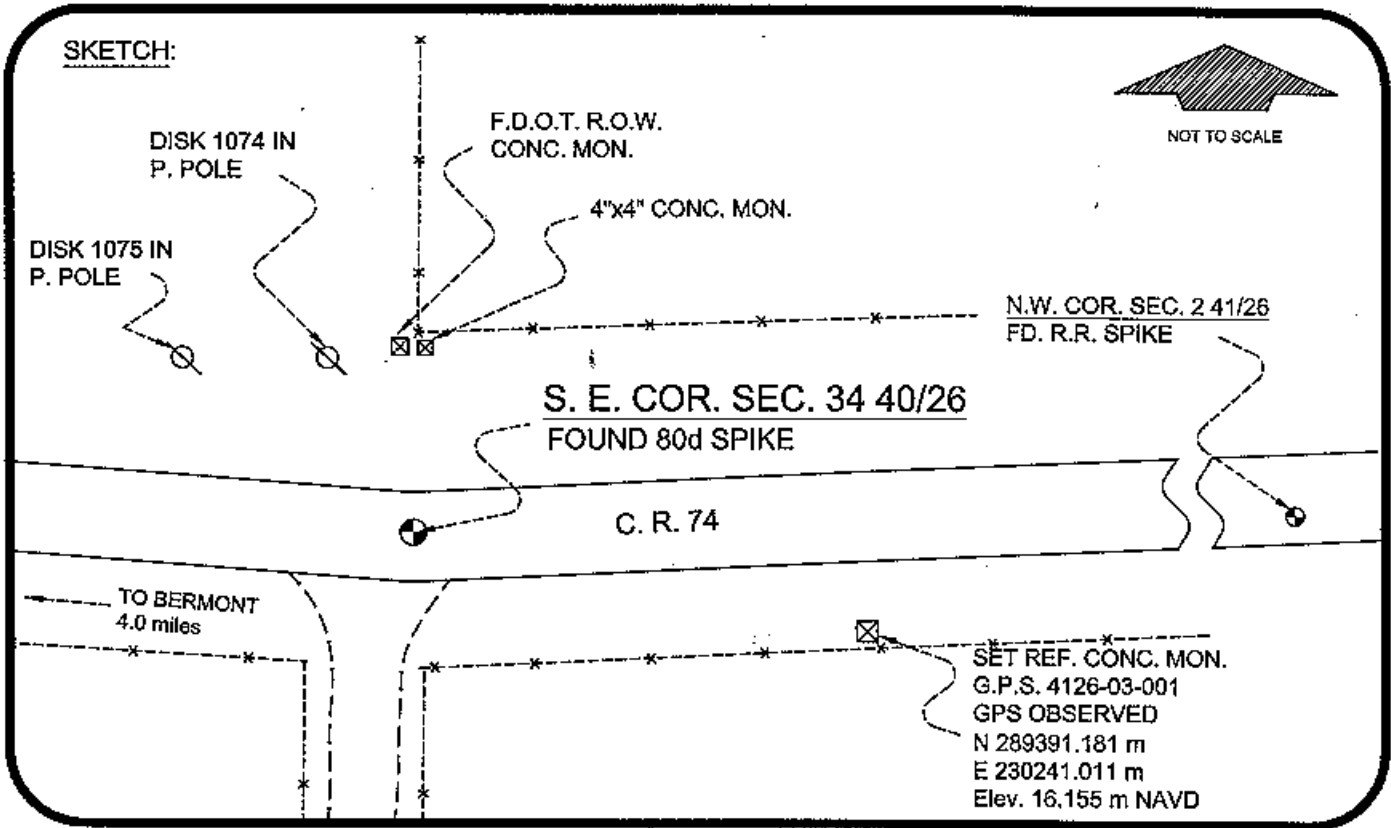
Control point(s) used for survey: CHARLOTTE COUNTY HORIZONTAL CONTROL NETWORK INCLUDES HAVOLINE 2, PLACIDA 2, W260, PUNTPORT, & FLGPS 58 AS B ORDER STATIONS.

Comments:

4026Z17

DOC. #

071672



BASIS OF BEARING SOLAR OBSERVATION REFER: FB 310/36

Elevations are GPS derived orthometric height (GEOID96) NAVD in meters.

REFERENCE MEASUREMENTS

Description	Bearing	Distance
DISK 1075 IN P. POLE	N 52°48'00" W	81.79'
DISK 1074 IN P. POLE	N 13°07'27" W	50.75'
F.D.O.T. R.O.W. CONC. MON.	N 00°49'22" W	50.06'
4" x 4" CONC. MON.	N 00°36'39" W	50.06'
N. W. COR. SEC. 2 41/26	S 89°51'18" E	391.60'
G.P.S. 4126-03-001	S 73°15'18" E	157.73'

SURVEYORS CERTIFICATE: I certify the monument and accessories indicated above were field located on March 29, 2000

R. Rose

PLS 4260

SIGNATURE

December 9, 2000

DATE

CHARLOTTE COUNTY SURVEY DEPT.

FIRM OR AGENCY

7000 FLORIDA STREET

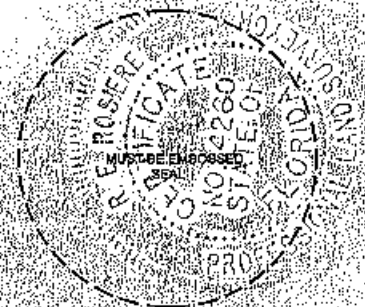
ADDRESS

PUNTA GORDA, FLA. 33950

CITY

STATE

506
Telegraph
Swamp NW



SEND TO:

Department of Environmental Protection
Bureau of Survey and Mapping
3900 Commonwealth Boulevard
Mail Station 105
Tallahassee, Florida 32399

Completeness checked by: LS

Accepted and filed: 6-1-01 Date

B.L.M. - I.D. 500100 D.N.R. USE ONLY