

FLORIDA DEPARTMENT OF ENVIRONMENTAL PROTECTION

CERTIFIED CORNER RECORD

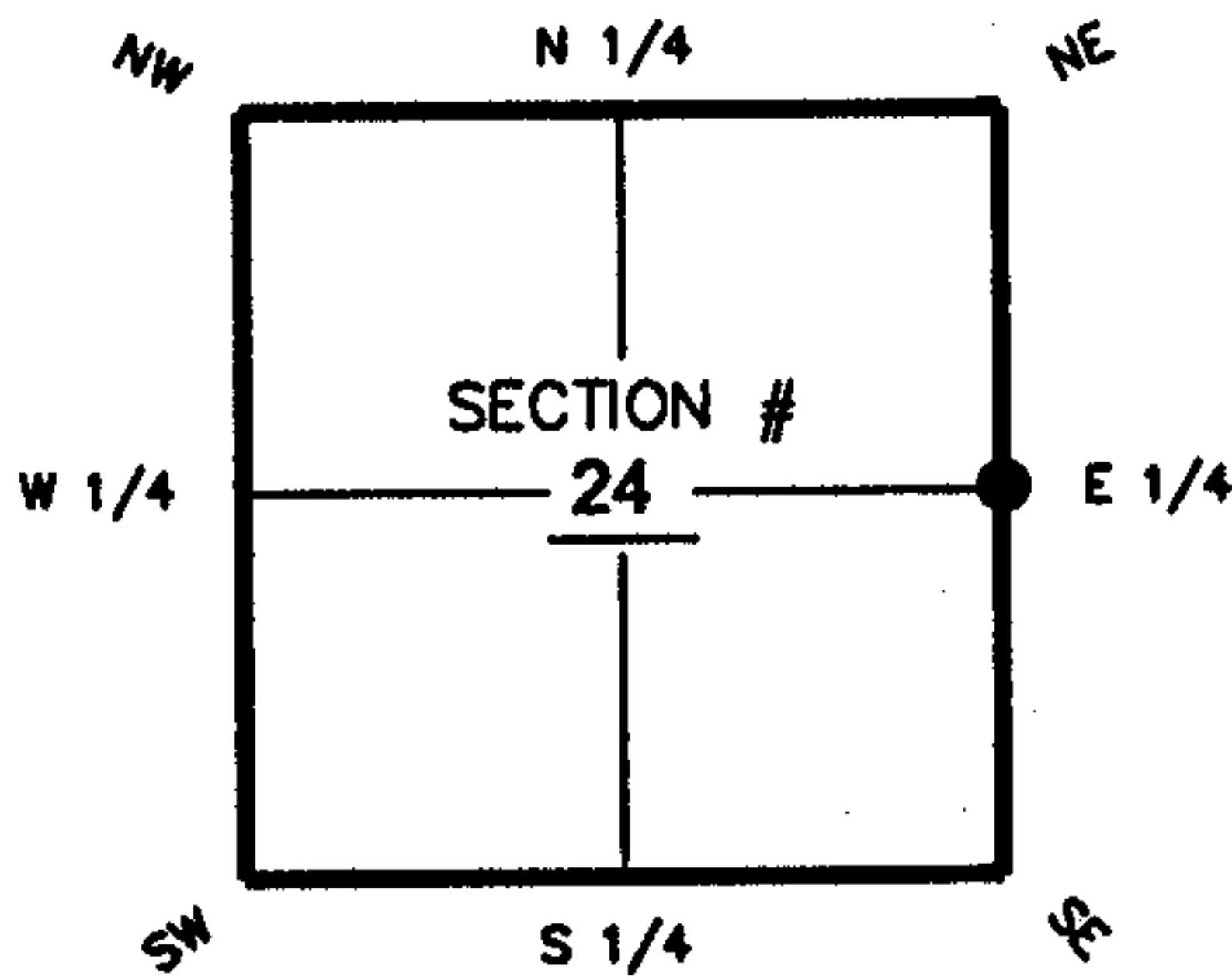
079903

DOC. # _____

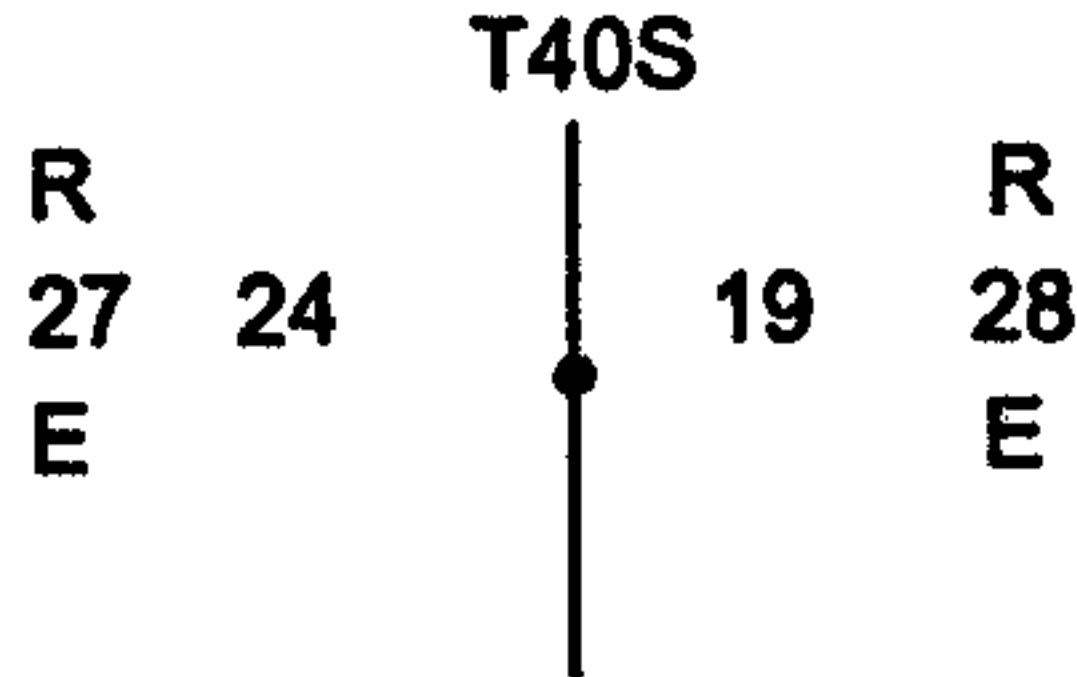
CORNER DESCRIPTION: MONUMENTATION DESCRIPTION (EVIDENCE FOUND OR METHOD TO SET)

Depict corner with 

Found 3" Dia. Round Concrete Monument with Brass Plate stamped with



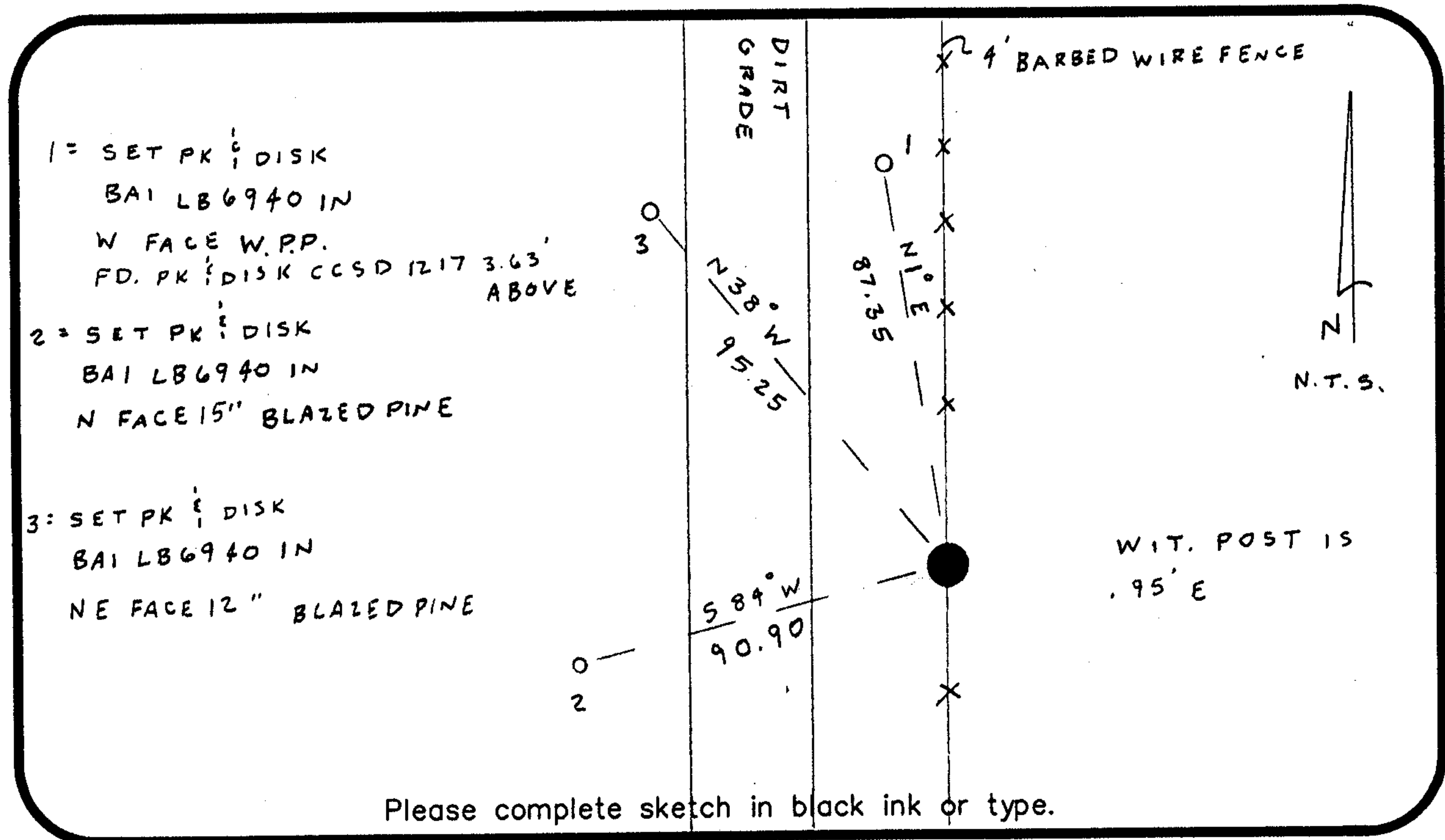
E 1/4 corner of Section 24
Twp 40 S, Rge 27 E
Tallahassee Base Meridian,
Charlotte County(s), Florida



HORIZONTAL POSITION INFORMATION (if determined):

Latitude 26-58-54.9565 N Longitude 81-33-45.9474 W
Y(NORTHING-Ft.) 962850.278 X(EASTING-Ft.) 798563.110 Zone FL W
Convergence 0-11-54.17379708 Scale factor 0.99996442

Coordinate determination (circle one): Field traverse GPS
Horizontal datum (circle one): NAD27 NAD83(1986) NAD83(1990) other (explain)
Accuracy (circle one): 1st 2nd 3rd other _____



Please complete sketch in black ink or type.

SURVEYORS CERTIFICATE:

I certify the monument and accessories indicated above were field located on July 11, 2003

Scott A. Wheeler 5949
SIGNATURE PSM NO.
Barraco and Associates, Inc. LB 6940
FIRM OR AGENCY LB NO.
2271 McGregor Boulevard
ADDRESS
Fort Myers FL 33902-2800
CITY STATE ZIP
(239) 461-3170 8/11/2003
PHONE NUMBER DATE

EMBOSSSED SEAL OVER SIGNATURE

SEND ORIGINAL TO:
Department of Environmental Protection
Bureau of Surveying and Mapping
3900 Commonwealth Boulevard
Mail Station 105
Tallahassee, Florida 32399

D.E.P. USE ONLY
Processed: 9-23-2003 CH
B.L.M. - I.D. 700 340
QUAD - I.D. 2413 Telegraph Swamp NE