

4120A02

DOC. #

050932

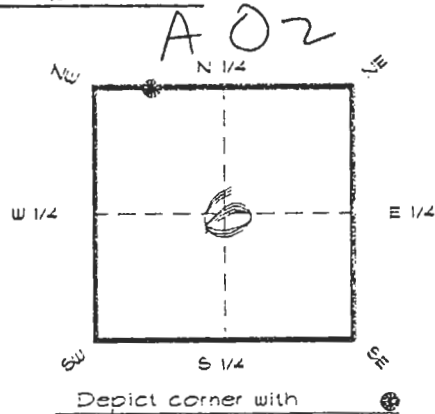
FLORIDA DEPARTMENT OF ENVIRONMENTAL PROTECTION
CERTIFIED CORNER RECORD

CORNER DESCRIPTION:

N.E. COR. GOVT. LOT. 2, SEC. 6
Twp 41 S., Rge 20 E.

Tallahassee Base Meridian,

CHARLOTTE County(s), Florida.



MONUMENTATION DESCRIPTION:

Describe original monument and accessories, or subsequent restoration. Give sources of information. (If no attempt was made to search for the original monument and accessories, this information is not necessary.)

Description of corner evidence found:

CONCRETE MONUMENT

State method(s) to determine corner location (lost corners only):

HORIZONTAL POSITION INFORMATION (if determined):

Latitude 26°56'45.16783" N Longitude 82°20'57.28104" W

Y(Northing) 289455.630 m X(Easting) 165321.086 m Zone FLW

Convergence -0°09'29.741" Scale factor 0.99993602

Coordinate determination (circle one): Field traverse (GPS)

Horizontal datum (circle one): NAD27 NAD83(1986) (NAD83(1990)) other (explain)

Order of accuracy as defined in Standards and Specifications for Geodetic Control Networks published by the Federal Geodetic Control Committee (circle one): 1st, (2nd), 3rd, class 1

or Minimum Technical Standards (Chapter 6IG17, F.A.C.) ratio of closure for field data (example 1:10,000), _____ . This does not specify an order of accuracy.

Control point(s) used for survey: CHARLOTTE COUNTY HORIZONTAL CONTROL NETWORK INCLUDES HAYOLINE 2, PLACIDA 2, W260, PUNTPORT, 4 FLGPS 58 AS 5th ORDER STATIONS.

Comments:

RECEIVED

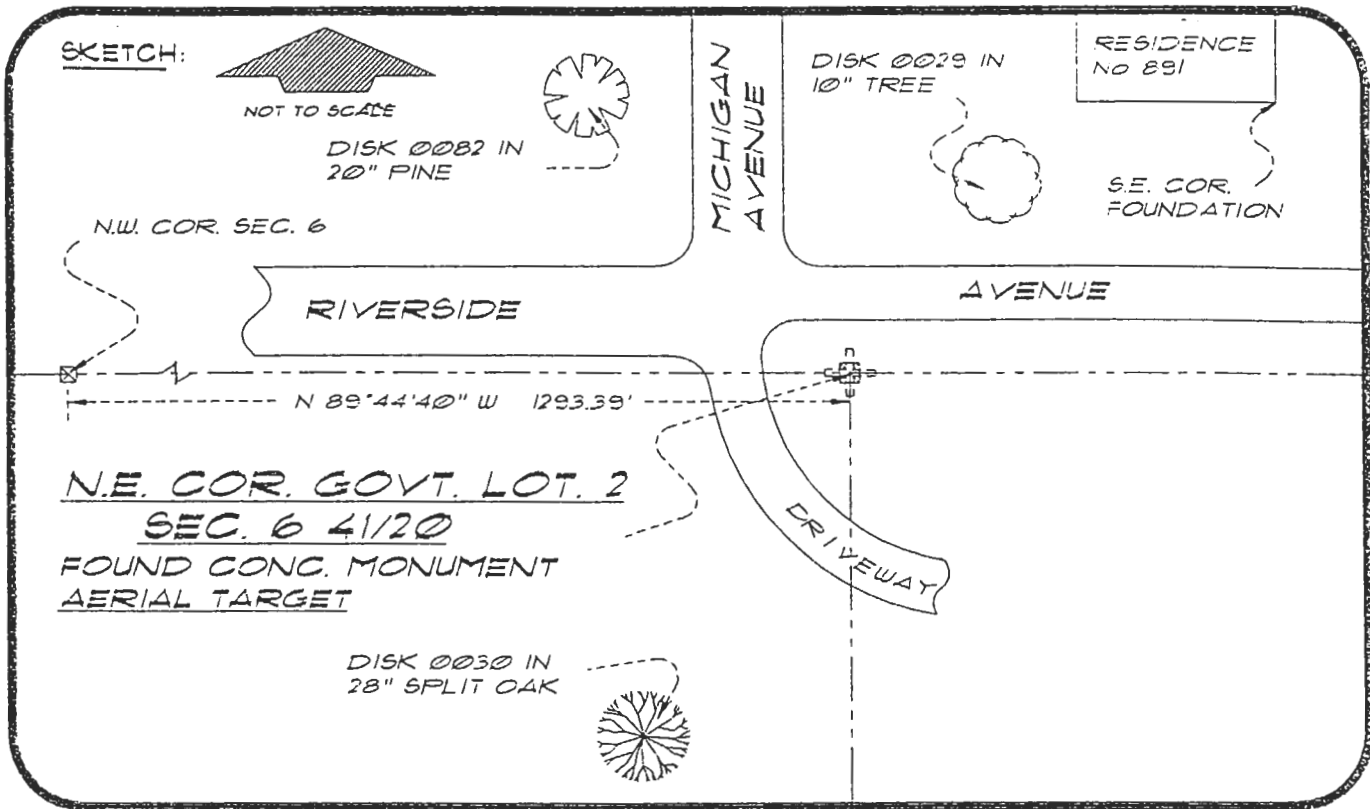
JAN 31 1995

SURVEY & MAPPING

4120A02

DOC. #

050932



BASIS OF BEARING SOLAR OBSERVATION REFER: FB 281/15

SET SURVEY MARKER POST 3.0' E'LY

REFERENCE MEASUREMENTS

Description	Bearing	Distance
DISK 0082 IN 20" PINE	N 33°49'09" W	78.05'
DISK 0029 IN 10" TREE	N 40°54'26" E	39.37'
S.E. COR. FOUNDATION	N 55°18'21" E	111.09'
DISK 0030 IN 28" OAK	S 19°50'26" W	83.76'

SURVEYORS CERTIFICATE: I certify the monument and accessories indicated above were field located on APRIL 30, 1992

UPDATE JAN. 3, 1995
PLS 4260

R. Ross

SIGNATURE

1/30/95

DATE

CHARLOTTE COUNTY SURVEY DEPT.

FIRM OR AGENCY

7000 FLORIDA STREET

ADDRESS

PUNTA GORDA, FLORIDA 33950

CITY

STATE



511

Completeness checked by: *B. Linton*

Accepted and filed: 3-1-93

BLM. - ID. 06W00031 Date

DNR USE ONLY

SEND TO:

Department of Environmental Protection
Bureau of Survey and Mapping
3900 Commonwealth Boulevard
Mail Station 105
Tallahassee, Florida 32399