

4120A05

DOC. #

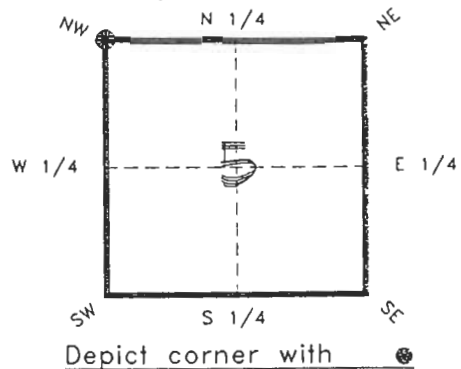
050929

FLORIDA DEPARTMENT OF NATURAL RESOURCES  
CERTIFIED CORNER RECORD

A 05

CORNER DESCRIPTION:

N.W. corner of Section 5 ,  
Twp 41 S. , Rge 20 E. ,  
Tallahassee Base Meridian,  
CHARLOTTE County(s), Florida.



MONUMENTATION DESCRIPTION:

Describe original monument and accessories, or subsequent restoration. Give sources of information. (If no attempt was made to search for the original monument and accessories, this information is not necessary.)

Description of corner evidence found:

C.C.S.D. BRASS DISC SET IN CONCRETE IN MONUMENT WELL

State method(s) to determine corner location (lost corners only):

HORIZONTAL POSITION INFORMATION ( if determined ):

Latitude 26°56'45.04729"N Longitude 82°20'14.24356"W  
Y(Northing) 289448.698(M) X(Easting) 166508.164(M) Zone FL W  
Convergence -0°09'10.237" Scale factor 0.99995502

Coordinate determination (circle one): Field traverse  GPS   
Horizontal datum (circle one): NAD27 NAD83(1986)  NAD83(1990) other (explain)

Order of accuracy as defined in "Standards and Specifications for Geodetic Control Networks" published by the Federal Geodetic Control Committee (circle one):  
1st   2nd, 3rd, class \_\_\_\_\_ ,

or Minimum Technical Standards (Chapter 21HH-6, F.A.C.) ratio of closure for field data (example 1:10,000), \_\_\_\_\_ . This does not specify an order of accuracy.

Control point(s) used for survey:

Comments:

RECEIVED

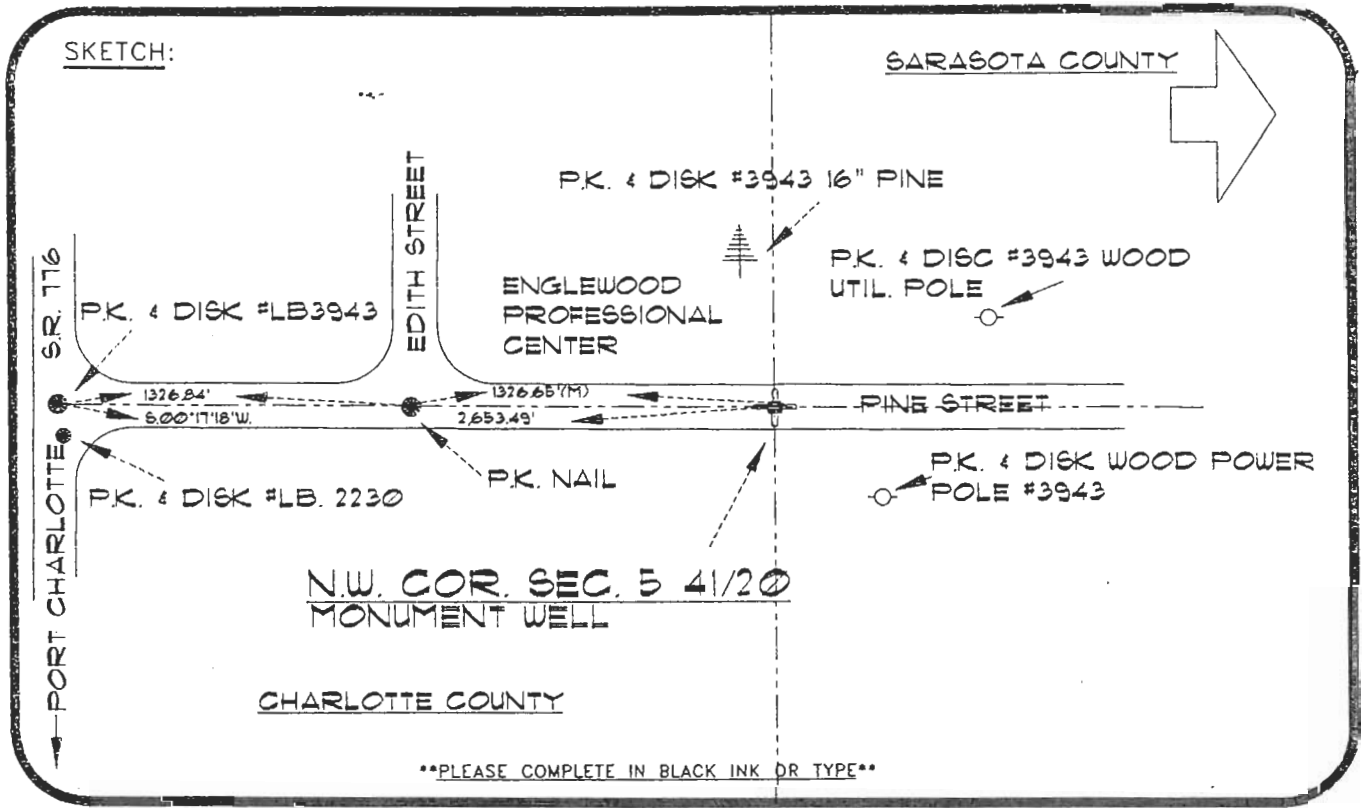
JAN 31 1995

SURVEY & MAPPING

050929

4120A05

DOC. #



\*\*PLEASE COMPLETE IN BLACK INK OR TYPE\*\*

BASIS OF BEARING-SOLAR OBSERVATION REFER: F.B. 281-16

All bearings and distances must be from the corner to the witness. Indicate whether corner was found, set, or replaced and show north arrow.

REFERENCE MEASUREMENTS ( at least three vicinity references must be given below even if they appear on the above sketch ):

Description	Bearing	Distance
P.K. & DISK #3943-16" PINE	S.76°18'30"W.	69.06'
P.K. & DISK #3943-WOOD UTIL. POLE	N.22°21'47"W.	102.73'
P.K. & DISK #3943-WOOD POWER POLE	N.40°49'40"E.	63.00'
P.K. & DISK #LB3943 1/4 CORNER	S.00°17'18"W.	2653.49'

SURVEYORS CERTIFICATE: I certify the monument and accessories indicated above were field located on UPDATE JANUARY 3, 19 95.

*[Signature]* PLS 4260  
SIGNATURE

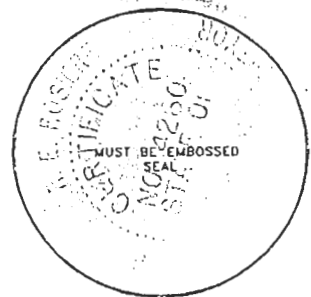
1/30/95  
DATE

CHARLOTTE COUNTY SURVEY DEPT.  
FIRM OR AGENCY

7000 FLORIDA STREET  
ADDRESS

PUNTA GORDA, FLA. 33950  
CITY STATE

511



Completeness checked by: *[Signature]*

Accepted and filed: 3-1-95 Date

B.L.M. - I.D. 06313205 D.N.R. USE ONLY

SEND TO:

Department of Natural Resources  
Bureau of Survey and Mapping  
3900 Commonwealth Boulevard  
Mail Station 105  
Tallahassee, Florida 32399

DNR 53-001(16)  
REV. 7/16/92  
PAGE 2 OF 2