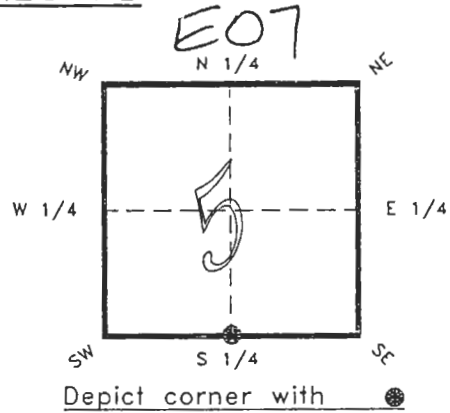


4120E07

FLORIDA DEPARTMENT OF ENVIRONMENTAL PROTECTION  
CERTIFIED CORNER RECORD

CORNER DESCRIPTION:

S. 1/4 corner of Section 5,  
Twp 41 S., Rge 20 E.,  
Tallahassee Base Meridian,  
CHARLOTTE County(s), Florida.



MONUMENTATION DESCRIPTION:

Describe original monument and accessories, or subsequent restoration. Give sources of information. (If no attempt was made to search for the original monument and accessories, this information is not necessary.)

Description of corner evidence found:

CONCRETE MONUMENT ( 4"x4" ) LB #3943

State method(s) to determine corner location (lost corners only):

RECEIVED

JAN 31 1995

SURVEY & MAPPING

HORIZONTAL POSITION INFORMATION ( if determined ):

Latitude 26°55'51.65087"N Longitude 82°19'45.30394"W  
Y(Northing) 287803.213 m X(Easting) 167302.117 m Zone FLW  
Convergence -0°08'56.850" Scale factor 0.99995437

Coordinate determination (circle one): Field traverse  GPS

Horizontal datum (circle one): NAD27 NAD83(1986)  NAD83(1990) other (explain)

Order of accuracy as defined in "Standards and Specifications for Geodetic Control Networks" published by the Federal Geodetic Control Committee (circle one):  
1st,  2nd, 3rd, class 7

or Minimum Technical Standards (Chapter 21HH-6, F.A.C.) ratio of closure for field data (example 1:10,000), . This does not specify an order of accuracy.

Control point(s) used for survey: CHARLOTTE COUNTY HORIZONTAL CONTROL NETWORK INCLUDES HAVOLINE 2, PLACIDA 2, W260, PUNTAPORT, & FLGPS 58 AS B ORDER STATIONS.

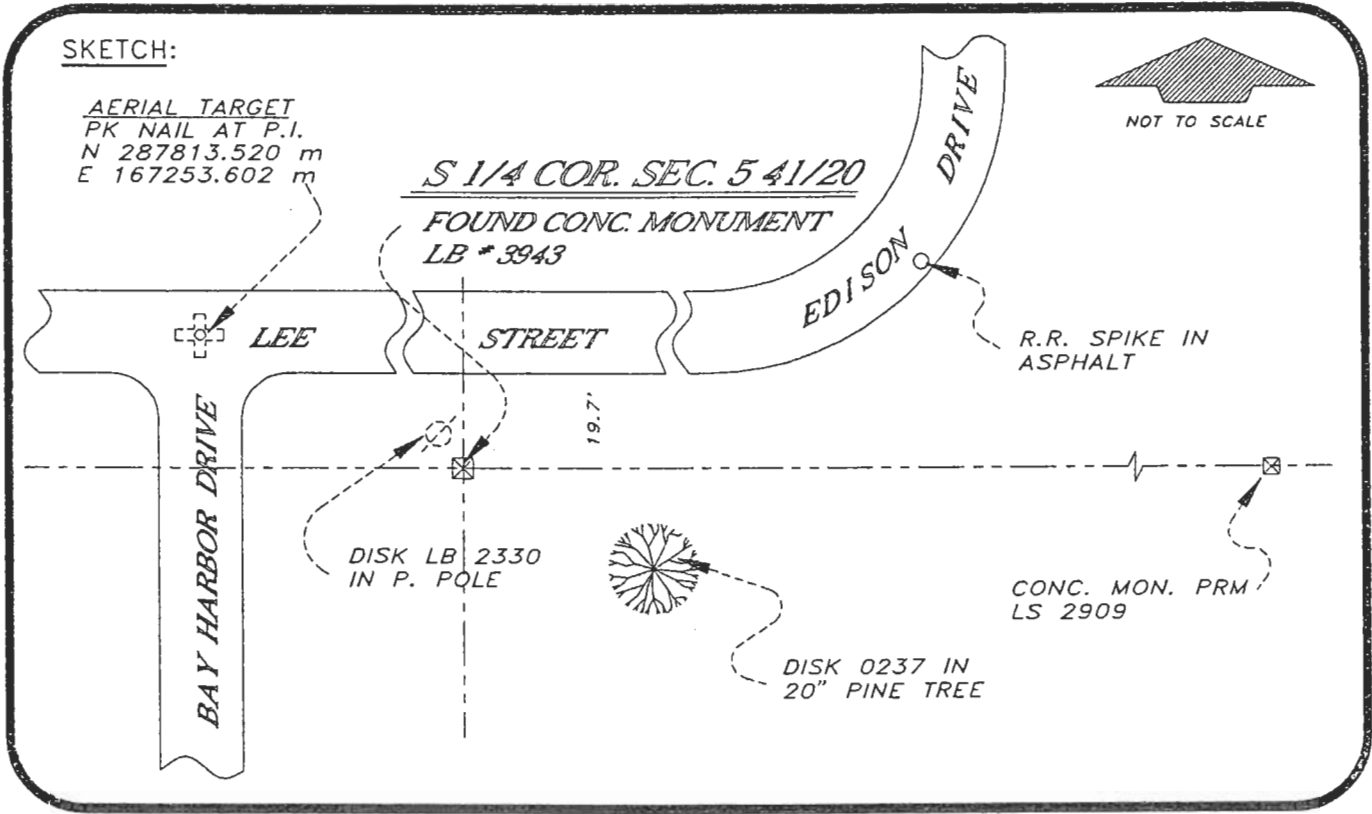
Comments:

REFER: BAY HARBOR EST. SUBD. PB 15 PG. 26  
GULFAIRE SUBD. PB. 7 PG. 16

050930

4120E07

DOC. #



BASIS OF BEARING SOLAR OBSERVATION REFER: FB 281/51  
SET SURVEY MARKER POST 3.0' S'LY

REFERENCE MEASUREMENTS

Description	Bearing	Distance
R.R. SPIKE IN ASPHALT	N 72°28'17" E	111.92'
CONC. MON. PRM	S 88°50'03" E	241.52'
DISK 0237 IN 20" PINE	S 69°32'14" E	41.59'
PK NAIL AT P.I.	N 78°09'19" W	162.73'
DISK LB 2330 IN P. POLE	N 36°07'29" W	1.60'

SURVEYORS CERTIFICATE: I certify the monument and accessories indicated above were field located on JUNE 30, 19 92.

*R. Rose*  
SIGNATURE

PLS 4260

UPDATE JAN. 3, 1995

1/30/95  
DATE

CHARLOTTE COUNTY SURVEY DEPT.

7000 FLORIDA STREET  
ADDRESS

PUNTA GORDA, FLA. 33950  
CITY STATE



511

Completeness checked by: *B. Smith*  
Accepted and filed: 3-1-95 Date  
B.L.M. - I.D. 08CC0005 D.N.R. USE ONLY

SEND TO:  
Department of Environmental Protection  
Bureau of Survey and Mapping  
3900 Commonwealth Boulevard  
Mail Station 105  
Tallahassee, Florida 32399