

4120E09

DOC. #

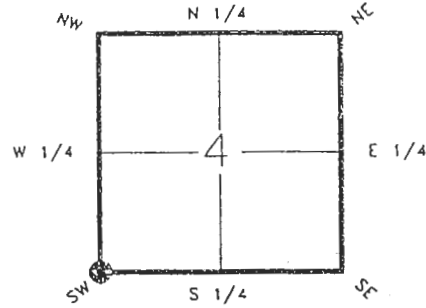
~~0045999~~

FLORIDA DEPARTMENT OF NATURAL RESOURCES
CERTIFIED CORNER RECORD

E-09

CORNER DESCRIPTION:

S.W. corner of Section 4 ,
Twp 41 S. , Rge 20 E. ,
Tallahassee Base Meridian,
CHARLOTTE County(s), Florida.



Depict corner with

MONUMENTATION DESCRIPTION:

Describe original monument and accessories, or subsequent restoration. Give sources of information. (If no attempt was made to search for the original monument and accessories, this information is not necessary.)

Description of corner evidence found:
4'x4' CONCRETE MONUMENT

State method(s) to determine corner location (lost corners only):

HORIZONTAL POSITION INFORMATION (if determined):

Latitude 26°55'51.12240"N Longitude 82°19'16.63031"W
Y(Northing) 287784.915(M) X(Easting) 168093.074(M) Zone FL W
Convergence -0°08'43.860" Scale factor 0.99995374

Coordinate determination (circle one): Field traverse GPS

Horizontal datum (circle one): NAD27 NAD83(1986) NAD83(1990) other (explain)

Order of accuracy as defined in "Standards and Specifications for Geodetic Control Networks" published by the Federal Geodetic Control Committee (circle one):
1st, 2nd, 3rd, class 1

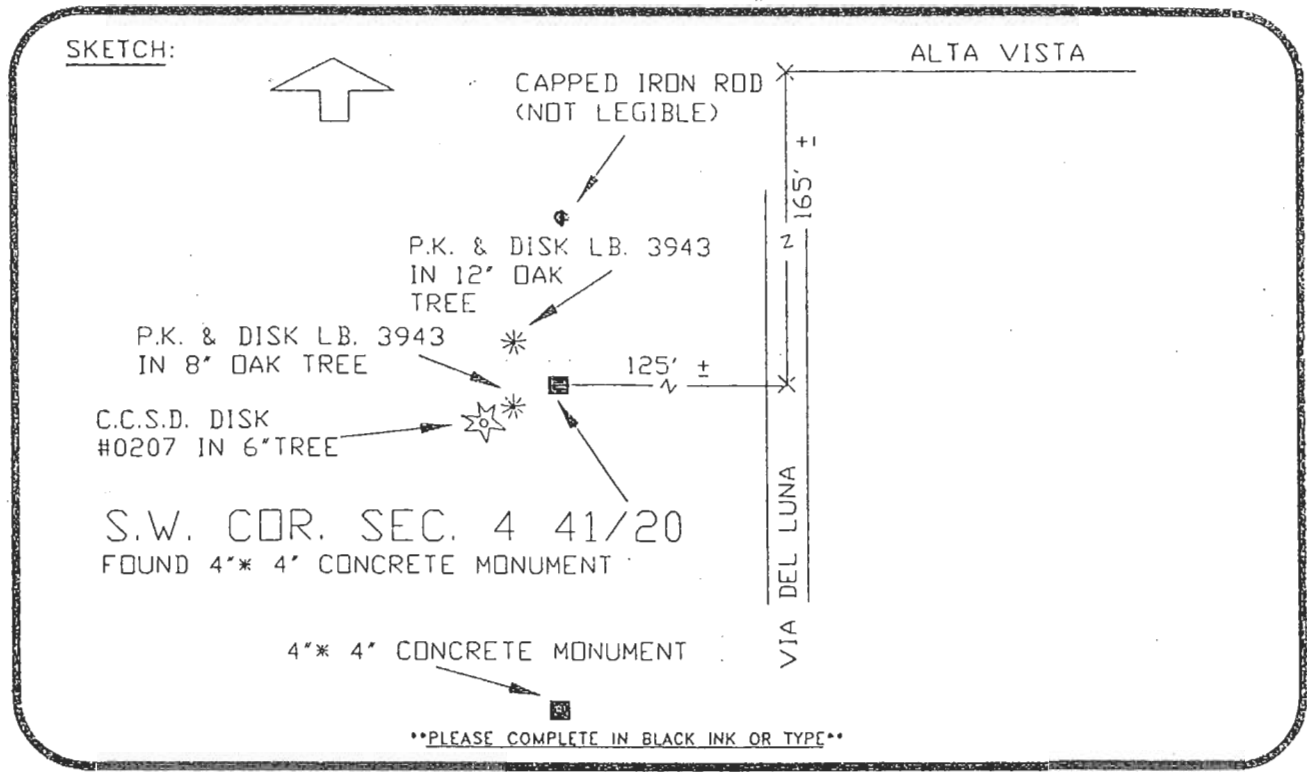
or Minimum Technical Standards (Chapter 21HH-6, F.A.C.) ratio of closure for field data (example 1:10,000), _____ . This does not specify an order of accuracy.

Control point(s) used for survey:

Comments:

DOC. #

0045992



SET SURVEY MARKER POST 3.0' W'LY REFER: F.B. 281-28
 All bearings and distances must be from the corner to the witness. Indicate whether corner was found, set, or replaced and show north arrow.
 BASIS OF BEARING SOLAR OBSERVATION
 REFERENCE MEASUREMENTS (at least three vicinity references must be given below even if they appear on the above sketch):

Description	Bearing	Distance (TRUE)
4' * 4' CONCRETE MONUMENT	S.00°18'54"E.	170.44'
C.C.S.D. DISK # 0207 IN 6' TREE	S.61°58'11"W.	40.25'
P.K. & DISK LB 3943 IN 8' OAK TREE	S.63°49'04"W	25.48'
P.K. & DISK LB 3943 IN 12' OAK TREE	N.43°11'39"W.	30.44'
CAPPED IRON ROD (NOT LEGIBLE)	N.01°11'06"E.	87.27'

SURVEYORS CERTIFICATE: I certify the monument and accessories indicated above were field located on MAY 26, 19 92.

[Signature] PLS 4260
 SIGNATURE
July 22, 1993
 DATE
 CHARLOTTE COUNTY SURVEY DEPT.
 FIRM OR AGENCY
 7000 FLORIDA STREET
 ADDRESS
 PUNTA GORDA, FLA. 33950
 CITY STATE



Completeness checked by: [Signature]
 Accepted and filed: 8-93 Date
 B.L.M. - I.D. 08050409 D.N.R. USE ONLY

SEND TO:
 Department of Natural Resources
 Bureau of Survey and Mapping
 3900 Commonwealth Boulevard
 Mail Station 105
 Tallahassee, Florida 32399

DNR 53-001(16)
 REV. 7/16/92
 PAGE 2 OF 2