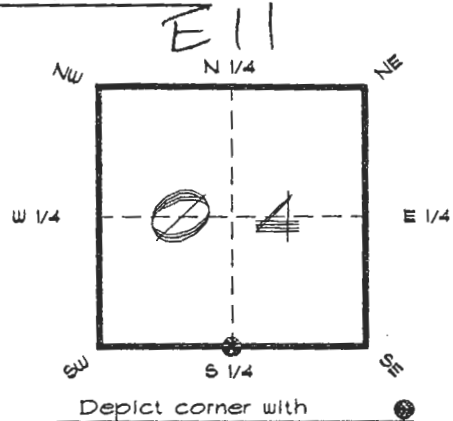


FLORIDA DEPARTMENT OF ENVIRONMENTAL PROTECTION
CERTIFIED CORNER RECORD

CORNER DESCRIPTION:

S. 1/4 corner of Section 04 ,
Twp 41 S. , Rge 20 E. ,
Tallahassee Base Meridian,
CHARLOTTE County(s), Florida.



MONUMENTATION DESCRIPTION:

Describe original monument and accessories, or subsequent restoration. Give sources of information. (If no attempt was made to search for the original monument and accessories, this information is not necessary.)

Description of corner evidence found:

RAILROAD SPIKE, REPLACED WITH CONCRETE MONUMENT IN WELL.

State method(s) to determine corner location (lost corners only):

HORIZONTAL POSITION INFORMATION (if determined):

Latitude 26°55'50.73303" N Longitude 82°18'46.97855" W
Y(Northing) 287770.880 m X(Easting) 168911.026 m Zone FLW
Convergence -0°08'30.428" Scale factor 0.99995310

Coordinate determination (circle one): Field traverse GPS

Horizontal datum (circle one): NAD27 NAD83(1986) NAD83(1990) other (explain)

Order of accuracy as defined in Standards and Specifications for Geodetic Control Networks published by the Federal Geodetic Control Committee (circle one):
1st, 2nd, 3rd, class _____ ,

or Minimum Technical Standards (Chapter 61G17, F.A.C.) ratio of closure for field data (example 1:10,000), _____ . This does not specify an order of accuracy.

Control point(s) used for survey: *CHARLOTTE COUNTY HORIZONTAL CONTROL NETWORK INCLUDES HAYOLINE 2, PLACIDA 2, W260, PUNTPORT, & FLGPS 58 AS B ORDER STATIONS.*

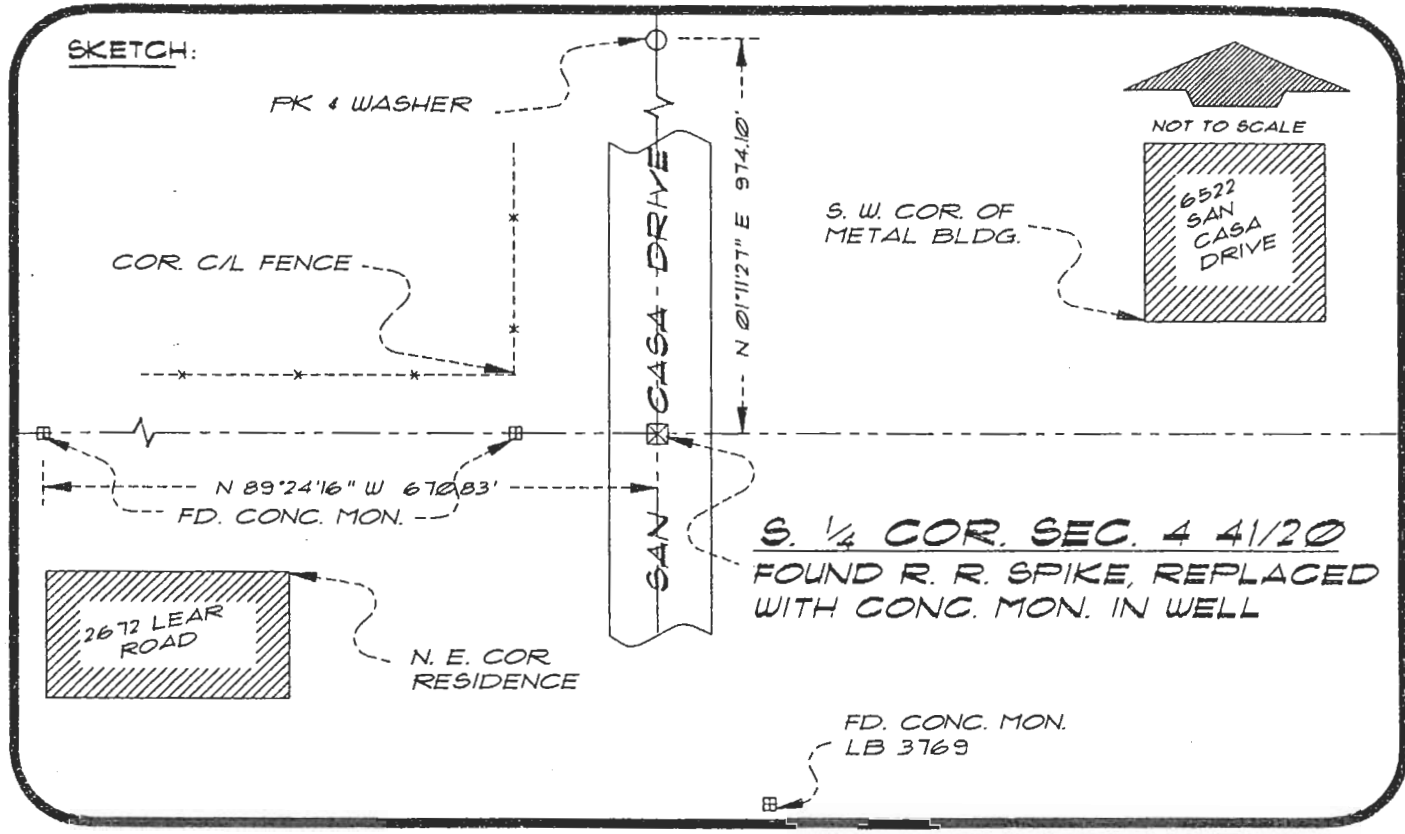
Comments:

RECEIVED

SEP 12 199A

4120E11

DOC. #



BASIS OF BEARING SOLAR OBSERVATION

REFER: FB 281/40

REFERENCE MEASUREMENTS

Description	Bearing	Distance
N. E. COR. RESIDENCE	S 51°23'15" W	81.82'
FD. CONC. MON.	N 89°17'55" W	33.00'
FD. CONC. MON. LB 3769	S 01°26'31" E	1327.83'
S.E. COR. FENCE	N 69°24'53" W	35.69'
S. W. COR. METAL BLDG.	N 77°13'22" E	90.33'

SURVEYORS CERTIFICATE: I certify the monument and accessories indicated above were field located on JUNE 5, 1992

R. P. ROSS PLS 4260
SIGNATURE

September 7, 1994
DATE

CHARLOTTE COUNTY SURVEY DEPT.
FIRM OR AGENCY

1000 FLORIDA STREET
ADDRESS

PUNTA GORDA, FLORIDA 33950
CITY STATE

511



Completeness checked by: B. Linton

Accepted and filed: 10-3-94 Date

BLM. - ID. 09CL0004 D.E.P. USE ONLY

SEND TO:
Department of Environmental Protection
Bureau of Survey and Mapping
3900 Commonwealth Boulevard
Mail Station 105
Tallahassee, Florida 32399