

4120E13

DOC. #

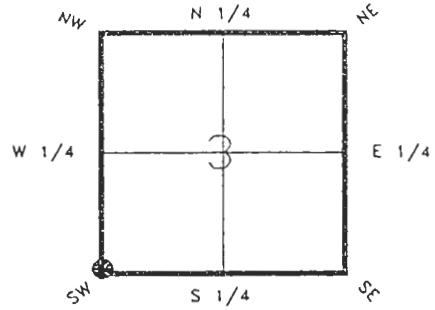
0045997

FLORIDA DEPARTMENT OF NATURAL RESOURCES  
CERTIFIED CORNER RECORD

E-13

CORNER DESCRIPTION:

S.W. corner of Section 3,  
Twp 41 S., Rge 20 E.,  
Tallahassee Base Meridian,  
CHARLOTTE County(s), Florida.



Depict corner with

MONUMENTATION DESCRIPTION:

Describe original monument and accessories, or subsequent restoration. Give sources of information. (If no attempt was made to search for the original monument and accessories, this information is not necessary.)

Description of corner evidence found:

CONCRETE MONUMENT WITH LEAD DISC "REC. 1930"

State method(s) to determine corner location (lost corners only):

HORIZONTAL POSITION INFORMATION ( if determined ):

Latitude 26°55'50.25693"N Longitude 82°18'17.32647"W  
Y(Northing) 287754.230(M) X(Easting) 169728.981(M) Zone FL W  
Convergence -0°08'16.995" Scale factor 0.99995248

Coordinate determination (circle one):

Field traverse  GPS

Horizontal datum (circle one): NAD27 NAD83(1986)  NAD83(1990) other (explain)

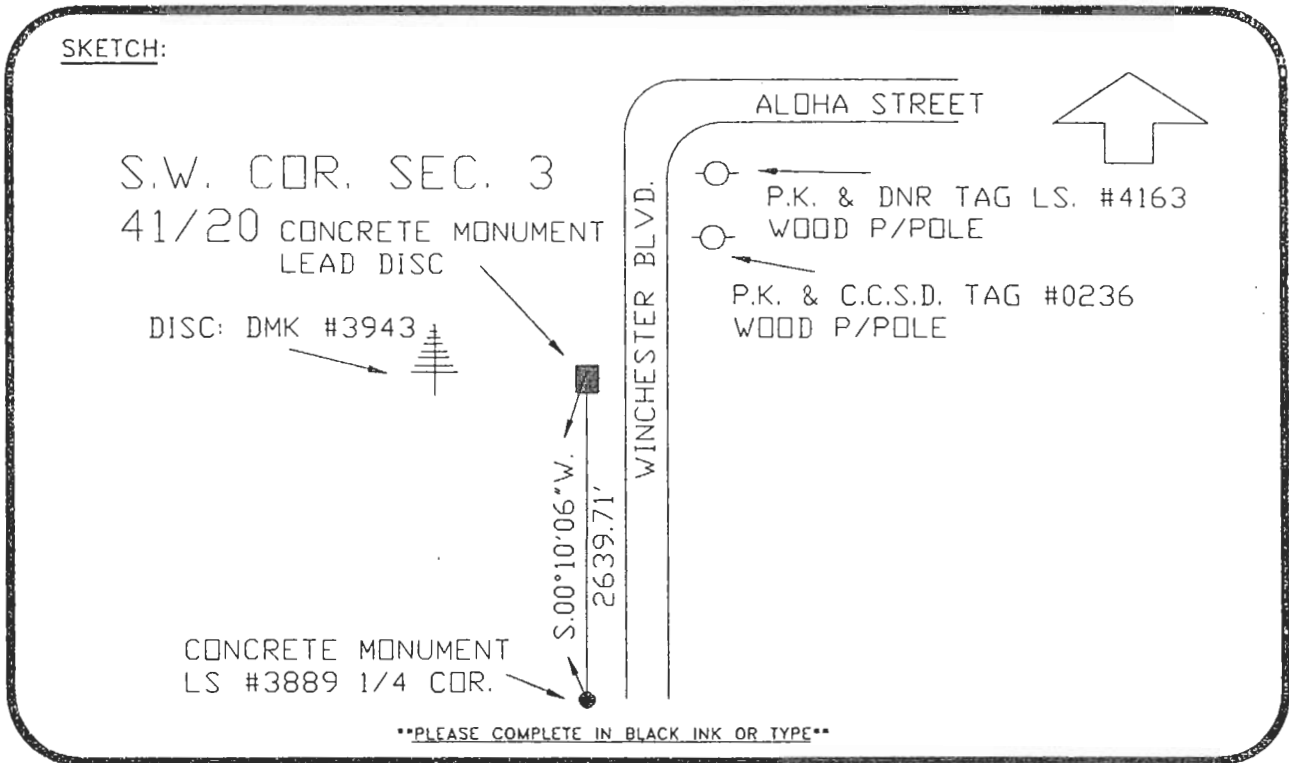
Order of accuracy as defined in "Standards and Specifications for Geodetic Control Networks" published by the Federal Geodetic Control Committee (circle one):

1st  2nd, 3rd, class 1

or Minimum Technical Standards (Chapter 21HH-6, F.A.C.) ratio of closure for field data (example 1:10,000), . This does not specify an order of accuracy.

Control point(s) used for survey:

Comments:



BASIS OF BEARING-FROM SUBDIVISION PLAT REFER: F.B. 281-38  
All bearings and distances must be from the corner to the witness. Indicate whether corner was found, set, or replaced and show north arrow.

REFERENCE MEASUREMENTS ( at least three vicinity references must be given below even if they appear on the above sketch ):

Description	Bearing	Distance
CONCRETE MON. 1/4 COR. LS. #3889	S.00°10'06"W.	2639.71'
P.K. & DISC DMK #3943 IN 16" PINE	S.82°05'58"W.	70.07'
P.K. & DNR REF. TAG #LS 4163 IN P/POLE	N.18°31'41"E.	103.23'
P.K. & C.C.S.D. TAG #0236 IN P/POLE	N.24°47'19"E.	74.96'

SURVEYORS CERTIFICATE: I certify the monument and accessories indicated above were field located on JUNE 3, 1992.

[Signature] PLS 4260  
SIGNATURE  
July 22, 1993  
DATE  
CHARLOTTE COUNTY SURVEY DEPT.  
FIRM OR AGENCY  
7000 FLORIDA STREET  
ADDRESS  
PUNTA GORDA, FLA. 33950  
CITY STATE



SEND TO:

Department of Natural Resources  
Bureau of Survey and Mapping  
3900 Commonwealth Boulevard  
Mail Station 105  
Tallahassee, Florida 32399

DNR 53-001(16)  
REV. 7/16/92  
PAGE 2 OF 2

Completeness checked by: GRG  
Accepted and filed: 8-93  
Date  
B.L.M. - I.D. 09040310 D.N.R. USE ONLY