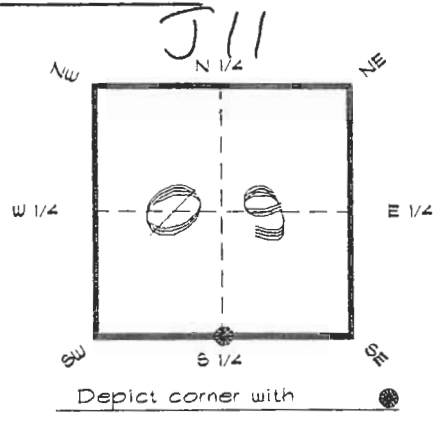


4120J11

FLORIDA DEPARTMENT OF ENVIRONMENTAL PROTECTION  
CERTIFIED CORNER RECORD

CORNER DESCRIPTION:

S. 1/4 corner of Section 09,  
Twp 41 S., Rge 20 E.,  
Tallahassee Base Meridian,  
CHARLOTTE County(s), Florida.



MONUMENTATION DESCRIPTION:

Describe original monument and accessories, or subsequent restoration. Give sources of information. (If no attempt was made to search for the original monument and accessories, this information is not necessary.)

Description of corner evidence found:  
4"x4" CONCRETE MONUMENT UNDER POST

RECEIVED  
JAN 31 1995  
SURVEY & MAPPING

State method(s) to determine corner location (lost corners only):

HORIZONTAL POSITION INFORMATION ( if determined ):

Latitude 26°54'58.30220" N Longitude 82°18'46.96439" W  
Y(Northing) 286157.222 m X(Easting) 168907.424 m Zone FLW  
Convergence -0°08'30.166" Scale factor 0.99995311

Coordinate determination (circle one): Field traverse (GPS)

Horizontal datum (circle one): NAD27 NAD83(1986) (NAD83(1990)) other (explain)

Order of accuracy as defined in Standards and Specifications for Geodetic Control Networks published by the Federal Geodetic Control Committee (circle one): 1st, 2nd, 3rd, class 1

or Minimum Technical Standards (Chapter 6IG17, F.A.C.) ratio of closure for field data (example 1:10,000), . This does not specify an order of accuracy.

Control point(s) used for survey: CHARLOTTE COUNTY HORIZONTAL CONTROL NETWORK INCLUDES HAYOLINE 2, PLACIDA 2, W260, PUNTPORT, 4 FLGPS 58 AS B ORDER STATIONS.

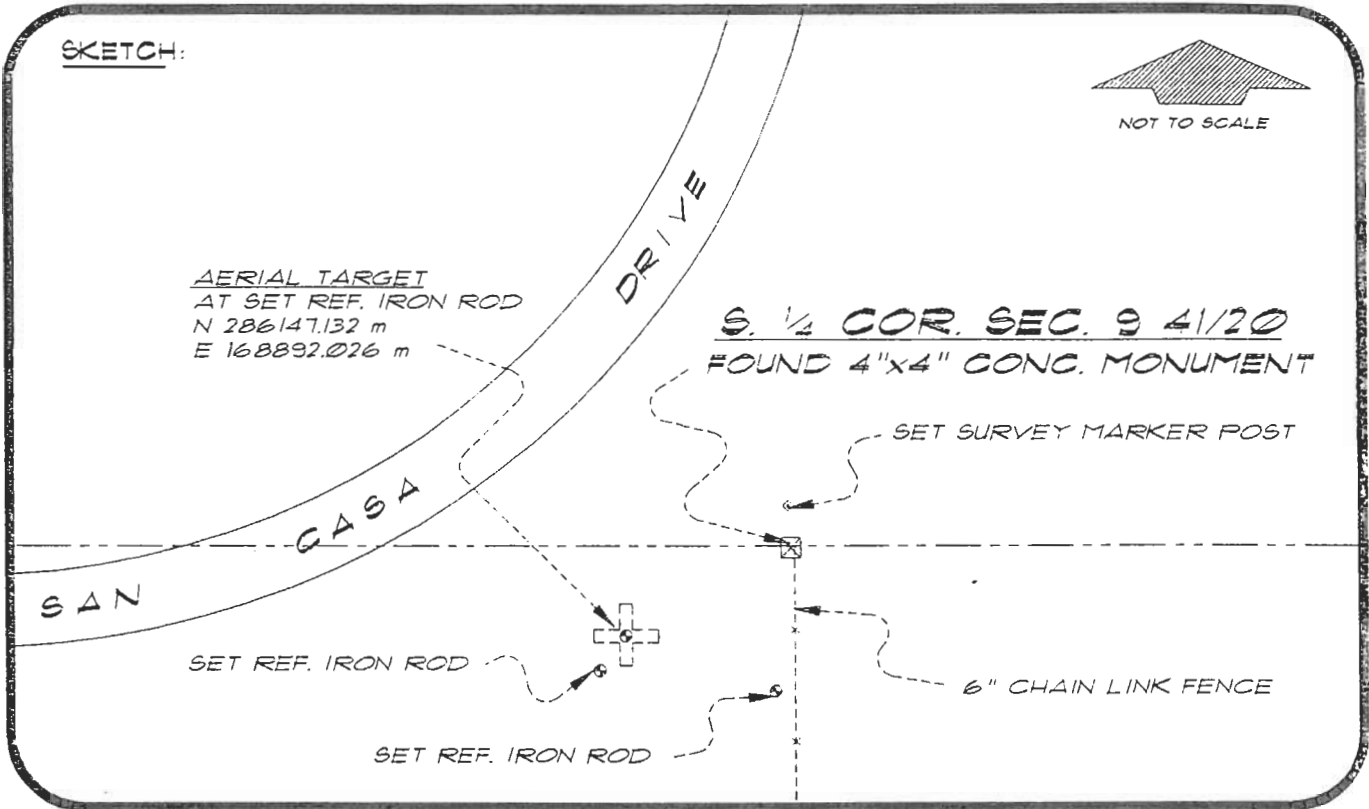
Comments:

4120J11

DOC. #

050934

SKETCH:



BASIS OF BEARING SOLAR OBSERVATION  
SET SURVEY MARKER POST N'LY 2.8'

REFER: FB 281/63

REFERENCE MEASUREMENTS

<u>Description</u>	<u>Bearing</u>	<u>Distance</u>
SET REF. IRON ROD	S 53°50'04" W	75.69'
SET REF. IRON ROD	S 03°24'38" W	49.25'
AERIAL TARGET	S 56°37'17" W	60.40'

SURVEYORS CERTIFICATE: I certify the monument and accessories indicated above were field located on AUGUST 31, 1994

*R. Ross*  
SIGNATURE

FLS 4260

UPDATED 1/24/95

1/30/95  
DATE

CHARLOTTE COUNTY SURVEY DEPT.  
FIRM OR AGENCY

7000 FLORIDA STREET  
ADDRESS

PUNTA GORDA, FLORIDA 33950  
CITY STATE



511

Completeness checked by: B. Linton  
 Accepted and filed: 3-1-95 Date  
 BLM. - ID. 16CL0009 DEF. USE ONLY

SEND TO:

Department of Environmental Protection  
Bureau of Survey and Mapping  
3900 Commonwealth Boulevard  
Mail Station 105  
Tallahassee, Florida 32399