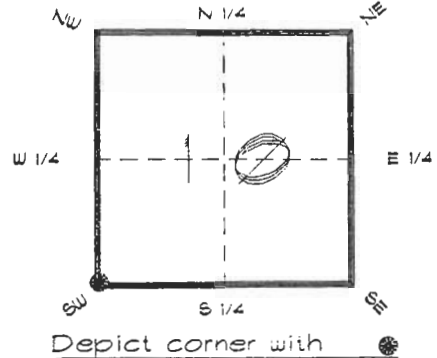


# FLORIDA DEPARTMENT OF ENVIRONMENTAL PROTECTION CERTIFIED CORNER RECORD

J13

CORNER DESCRIPTION:

S. W. corner of Section 10 ,  
Twp 41 S , Rge 20 E. ,  
Tallahassee Base Meridian,  
CHARLOTTE County(s), Florida.



MONUMENTATION DESCRIPTION:

Describe original monument and accessories, or subsequent restoration. Give sources of information. (If no attempt was made to search for the original monument and accessories, this information is not necessary.)

Description of corner evidence found:

**CONCRETE MONUMENT**

State method(s) to determine corner location (lost corners only):

**RECEIVED**  
JAN 31 1995  
SURVEY & MAPPING

HORIZONTAL POSITION INFORMATION ( if determined ):

Latitude 26°54'57.97401" N Longitude 82°18'17.61807" W  
Y(Northing) 286145.144 m X(Easting) 169717.060 m Zone FL W  
Convergence -0°08'16.879" Scale factor 0.99995249

Coordinate determination (circle one): Field traverse  **GPS**

Horizontal datum (circle one): NAD27 NAD83(1986) **NAD83(1990)** other (explain)

Order of accuracy as defined in "Standards and Specifications for Geodetic Control Networks" published by the Federal Geodetic Control Committee (circle one):  
1st, **2nd**, 3rd, class 1 ,

or Minimum Technical Standards (Chapter 21HH-6, F.A.C.) ratio of closure for field data (example 1:10,000), \_\_\_\_\_ . This does not specify an order of accuracy.

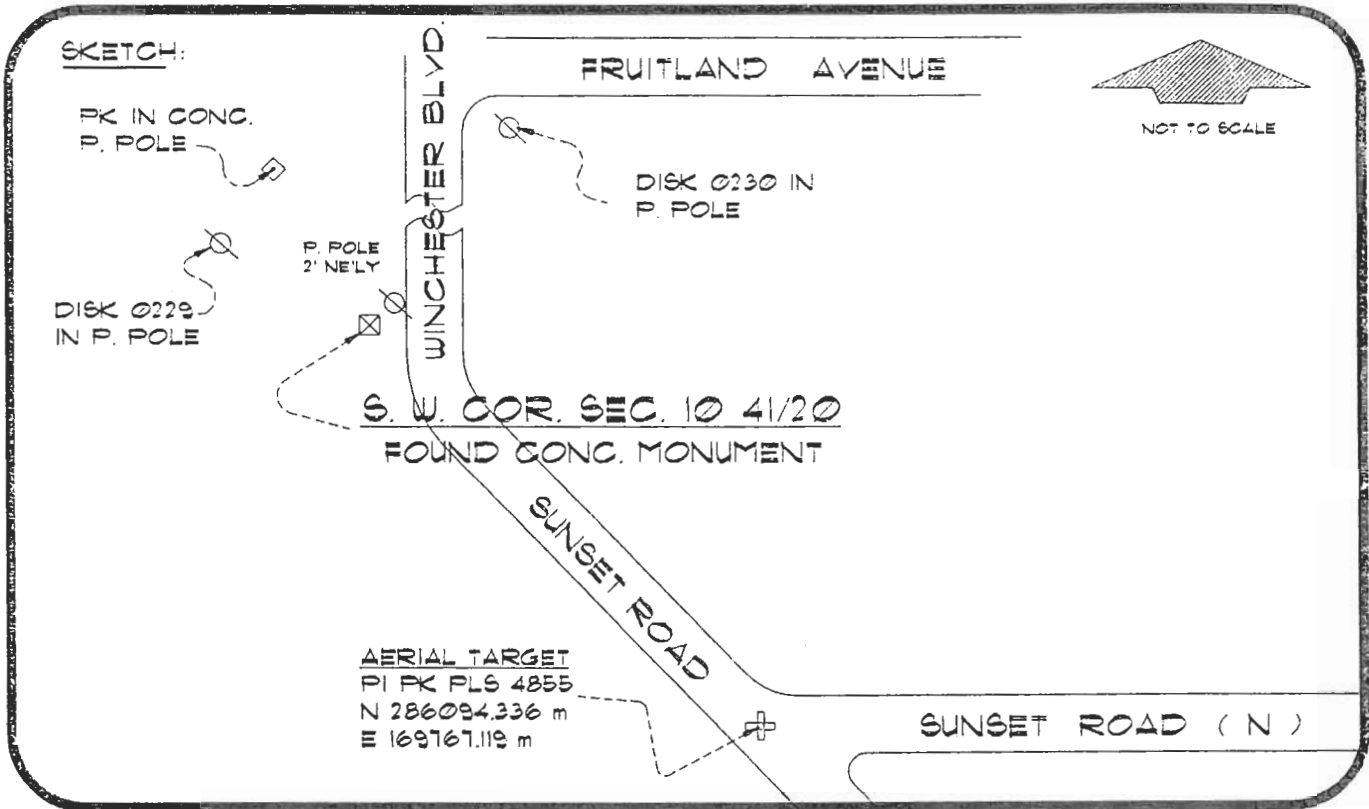
Control point(s) used for survey: CHARLOTTE COUNTY HORIZONTAL CONTROL NETWORK INCLUDES HAYOLINE 2, PLACIDA 2, W260, PUNTPORT, & FLGPS 58 AS B ORDER STATIONS.

Comments:

4120J13

DOC. #

050935



BASIS OF BEARING FROM PLAT DATA  
SET SURVEY MARKER POST 3.0' W'LY

REFER: FB 281/32

REFERENCE MEASUREMENTS

Description	Bearing	Distance
DISK 0229 IN P. POLE	N 63°02'11" W	53.35'
PK NAIL IN CONC. P. POLE	N 29°28'01" W	75.02'
DISK 0230 IN P. POLE	N 10°24'52" E	181.24'

BASIS OF BEARING SOLAR OBSERVATION

AERIAL TARGET                      S 44°42'46" E                      234.02'

SURVEYORS CERTIFICATE: I certify the monument and accessories indicated above were field located on JANUARY 9, 1995

R. Rose                      PLS 4260  
SIGNATURE

1/30/95  
DATE

CHARLOTTE COUNTY SURVEY DEPT.  
FIRM OR AGENCY

7000 FLORIDA STREET  
ADDRESS

PUNTA GORDA, FLA. 33950  
CITY                      STATE                      ZIP

511



Completeness checked by: B. Linton

Accepted and filed: 3-1-95  
Date

BLM - ID. 16091015                      DNR. USE ONLY

SEND TO:  
Department of Environmental Protection  
Bureau of Survey and Mapping  
3900 Commonwealth Boulevard  
Mail Station 105  
Tallahassee, Florida 32399