

4120J21

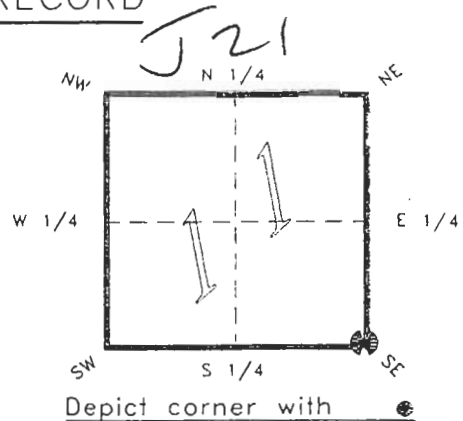
DOC. #

050937

FLORIDA DEPARTMENT OF NATURAL RESOURCES
CERTIFIED CORNER RECORD

CORNER DESCRIPTION:

S.E. corner of Section 11 ,
Twp 41 S. , Rge 20 E. ,
Tallahassee Base Meridian,
CHARLOTTE County(s), Florida.



MONUMENTATION DESCRIPTION:

Describe original monument and accessories, or subsequent restoration. Give sources of information. (If no attempt was made to search for the original monument and accessories, this information is not necessary.)

Description of corner evidence found:

SET CONCRETE MONUMENT BY SUBDIVISION PLAT DATA FROM EXISTING MONUMENTATION.

State method(s) to determine corner location (lost corners only):

SURVEY & MAPPING

JAN 31 1995

RECEIVED

HORIZONTAL POSITION INFORMATION (if determined):

Latitude 26°54'57.13366" Longitude 82°16'19.78202"
Y(Northing) 286111.870 m X(Easting) 172968.079 m Zone FL.W
Convergence -0°07'23.532" Scale factor 0.99995019

Coordinate determination (circle one): Field traverse GPS

Horizontal datum (circle one): NAD27 NAD83(1986) NAD83(1990) other (explain)

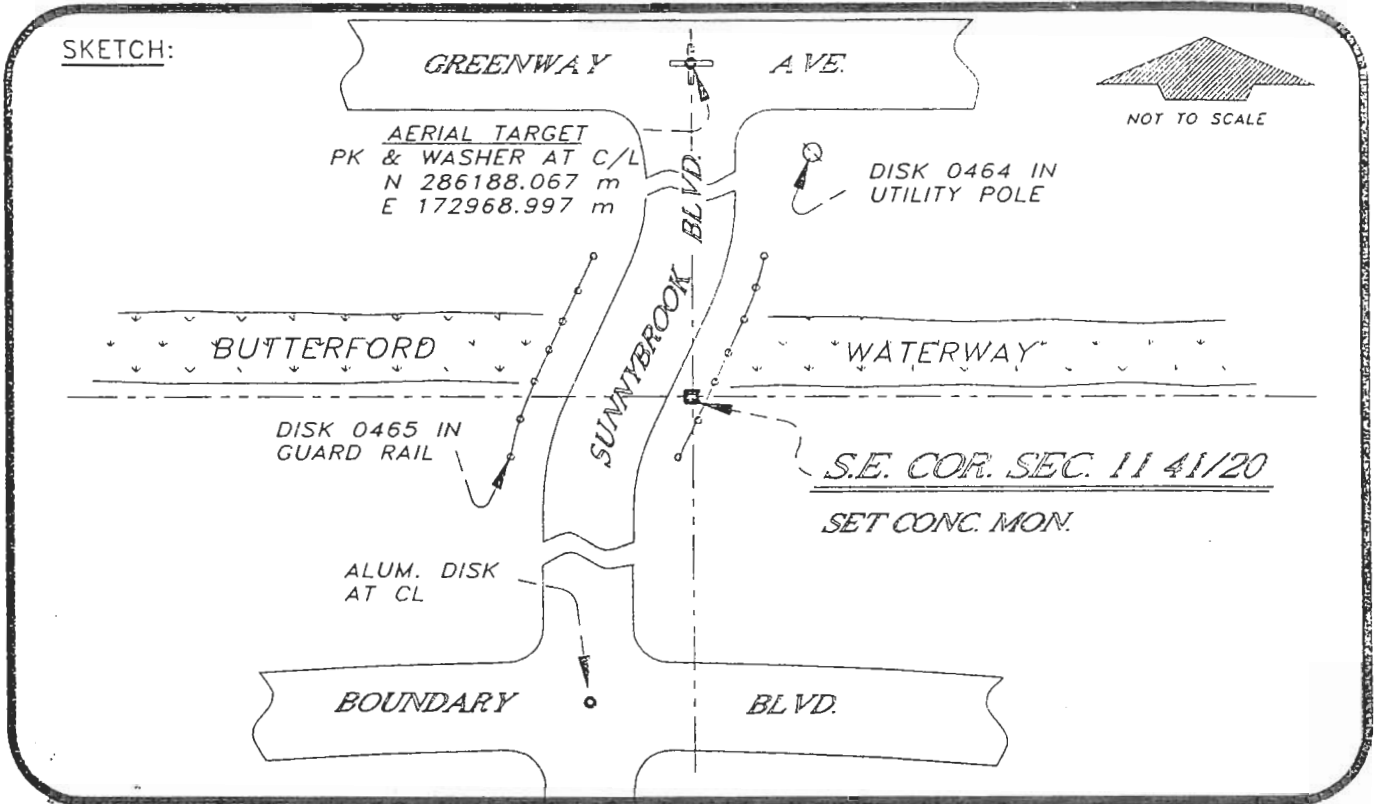
Order of accuracy as defined in "Standards and Specifications for Geodetic Control Networks" published by the Federal Geodetic Control Committee (circle one):
1st, 2nd, 3rd, class 1 ,

or Minimum Technical Standards (Chapter 21HH-6, F.A.C.) ratio of closure for field data (example 1:10,000), _____ . This does not specify an order of accuracy.

Control point(s) used for survey: CHARLOTTE COUNTY HORIZONTAL CONTROL NETWORK INCLUDES HAVOLINE 2, PLACIDA 2, W260, PUNTAPORT, & FLGPS 58 AS B ORDER STATIONS.

Comments:

REFER TO PORT CHARLOTTE SUBDIVISION, SECTION 64
PB. 5 PG. 78



BASIS OF BEARING FROM PLAT SEE COMMENTS

All bearings and distances must be from the corner to the witness. Indicate whether corner was found, set, or replaced and show north arrow.

SET SURVEY MARKER POST 3.0' E'LY REFER FB 281/60

REFERENCE MEASUREMENTS (at least three vicinity references must be given below even if they appear on the above sketch):

| Description | Bearing | Distance |
|---------------------------|-----------------|----------|
| ALUM. DISK "PCP" AT CL | S 10°12'22" W | 285.24 |
| DISK 0464 IN UTILITY POLE | N 09°59'37" E | 228.21' |
| DISK 0465 IN GUARD RAIL | S 75°41'07" W | 49.72' |
| PK & WASHER AT CL | N 00°30'22" E | 250.02' |
| (SOLAR OBSERVATION | N 00°34'00" E) | |

SURVEYORS CERTIFICATE: I certify the monument and accessories indicated above were field located on NOVEMBER 30 19 92

update 1/17/95

[Signature] PLS 4260
 SIGNATURE
1/30/95
 DATE
 CHARLOTTE COUNTY SURVEY DEPT.
 FIRM OR AGENCY
 7000 FLORIDA STREET
 ADDRESS
 PUNTA GORDA, FLA. 33950
 CITY STATE



511

Completeness checked by: *B. Smith*
 Accepted and filed: 3-1-95
 Date
 B.L.M. - I.D. 1411213 D.N.R. USE ONLY

SEND TO:
 Department of Natural Resources
 Bureau of Survey and Mapping
 3900 Commonwealth Boulevard
 Mail Station 105
 Tallahassee, Florida 32399