

4120N09

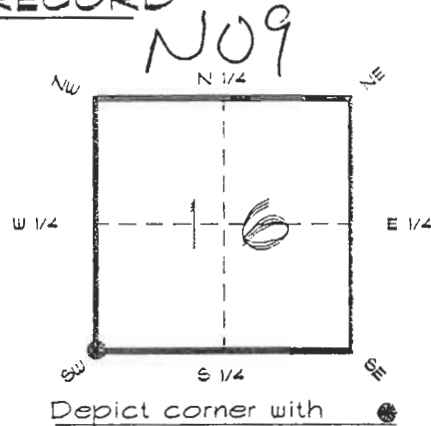
DOC. #

050938

FLORIDA DEPARTMENT OF ENVIRONMENTAL PROTECTION  
CERTIFIED CORNER RECORD

CORNER DESCRIPTION:

S. W. corner of Section 16  
Twp 41 S., Rge 20 E.  
Tallahassee Base Meridian,  
CHARLOTTE County(s), Florida.



MONUMENTATION DESCRIPTION:

Describe original monument and accessories, or subsequent restoration. Give sources of information. (If no attempt was made to search for the original monument and accessories, this information is not necessary.)

Description of corner evidence found:

3/4" IRON PIPE, REPLACED WITH CONCRETE MONUMENT

State method(s) to determine corner location (lost corners only):

HORIZONTAL POSITION INFORMATION ( if determined ):

Latitude 26°54'05.60189" N Longitude 82°19'17.03537" W  
Y(Northing) 284537.352 m X(Easting) 168073.653 m Zone FL. W  
Convergence -0°08'43.515" Scale factor 0.99995376

Coordinate determination (circle one): Field traverse GPS

Horizontal datum (circle one): NAD27 NAD83(1986) NAD83(1990) other (explain)

Order of accuracy as defined in "Standards and Specifications for Geodetic Control Networks" published by the Federal Geodetic Control Committee (circle one): 1st, 2nd, 3rd, class \_\_\_\_\_

or Minimum Technical Standards (Chapter 21HH-6, F.A.C.) ratio of closure for field data (example 1:10,000), \_\_\_\_\_. This does not specify an order of accuracy.

Control point(s) used for survey: CHARLOTTE COUNTY HORIZONTAL CONTROL NETWORK INCLUDES HAYOLINE 2, PLACIDA 2, W260, PUNTPORT, & FLGPS 58 AS B ORDER STATIONS.

Comments:

RECEIVED

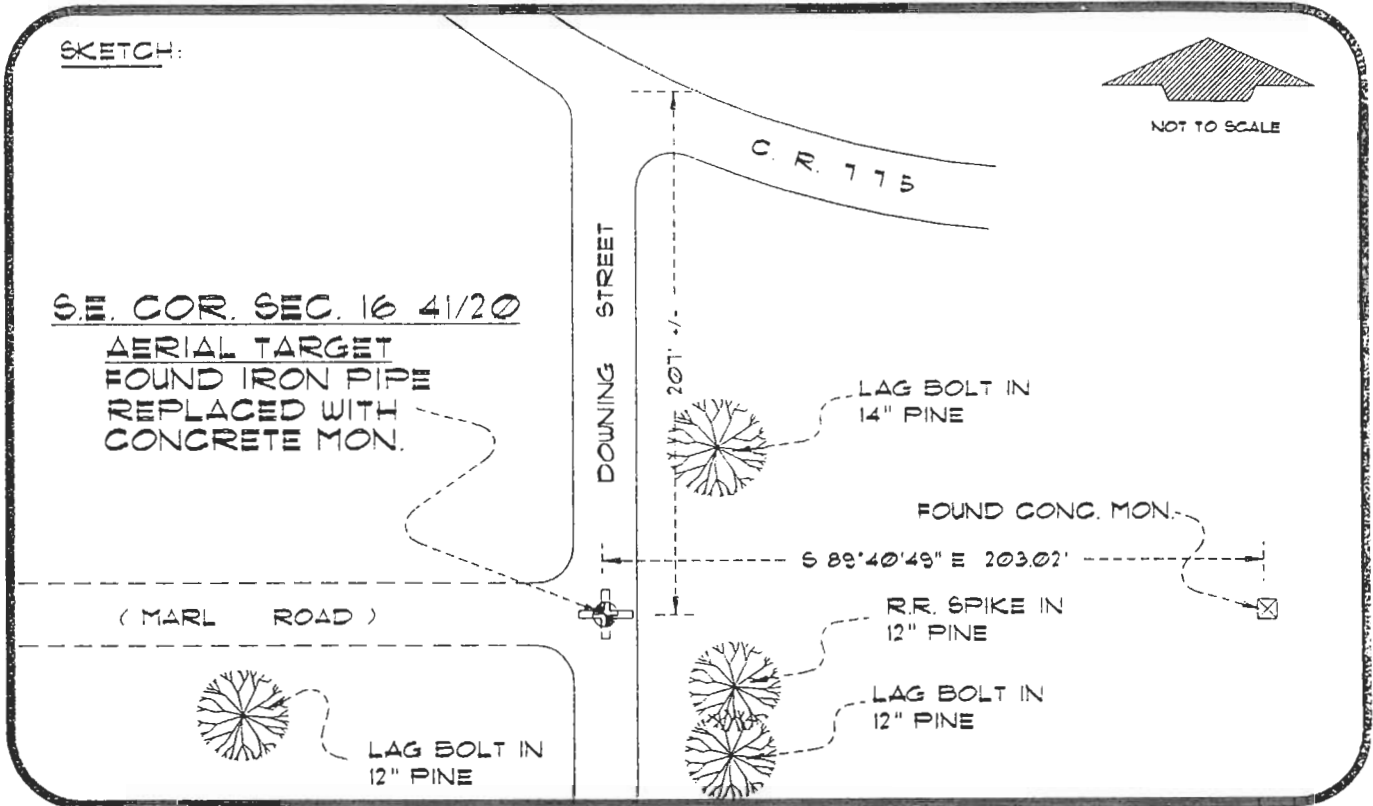
JAN 31 1995

BY & MAPPING

050938

4120N09

DOC. #



BASIS OF BEARING SOLAR OBSERVATION

REFER: FB 281/30

REFERENCE MEASUREMENTS

Description	Bearing	Distance
LAG BOLT IN 12" PINE	S 79°02'06" W	73.48'
LAG BOLT IN 12" PINE	S 32°52'14" E	40.55'
R.R. SPIKE IN 12" PINE	S 63°16'04" E	26.56'
LAG BOLT IN 14" PINE	N 25°42'09" E	41.36'

SURVEYORS CERTIFICATE: I certify the monument and accessories indicated above were field located on DECEMBER 27, 1994

*R. R. Ross*

PLS 4260

SIGNATURE

1/30/95

DATE

CHARLOTTE COUNTY SURVEY DEPT.

FIRM OR AGENCY

1000 FLORIDA STREET

ADDRESS

PUNTA GORDA, FLA. 33950

CITY

STATE



SEND TO:

Department of Environmental Protection  
Bureau of Survey and Mapping  
3900 Commonwealth Boulevard  
Mail Station 105  
Tallahassee, Florida 32399

Completeness checked by: *B. O. ...*

Accepted and filed: *3-1-95*

Date

BLM - ID. 20171621

DNR USE ONLY