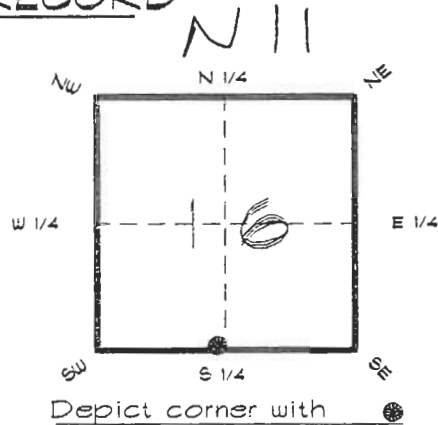


4120N11

# FLORIDA DEPARTMENT OF ENVIRONMENTAL PROTECTION CERTIFIED CORNER RECORD

CORNER DESCRIPTION:

S 1/4 corner of Section 16 ,  
Twp 41 S. , Rge 20 E. ,  
Tallahassee Base Meridian,  
CHARLOTTE County(s), Florida.



MONUMENTATION DESCRIPTION:

Describe original monument and accessories, or subsequent restoration. Give sources of information. (If no attempt was made to search for the original monument and accessories, this information is not necessary.)

Description of corner evidence found:

**3"x3" CONCRETE MONUMENT WITH TOP BROKEN**

State method(s) to determine corner location (lost corners only):

**RECEIVED**

JAN 31 1995

SURVEY & MAPPING

HORIZONTAL POSITION INFORMATION ( if determined ):

Latitude 26°54'05.44660" N Longitude 82°18'47.85213" W  
Y(Northing) 284530.555 m X(Easting) 168878.906 m Zone FL. W  
Convergence -0.08'30.310" Scale factor 0.99995313

Coordinate determination (circle one): Field traverse  **GPS**

Horizontal datum (circle one): NAD27 NAD83(1986) **NAD83(1990)** other (explain)

Order of accuracy as defined in "Standards and Specifications for Geodetic Control Networks" published by the Federal Geodetic Control Committee (circle one):

1st, **2nd**, 3rd, class 1 ,

or Minimum Technical Standards (Chapter 21HH-6, F.A.C.) ratio of closure for field data (example 1:10,000), \_\_\_\_\_ . This does not specify an order of accuracy.

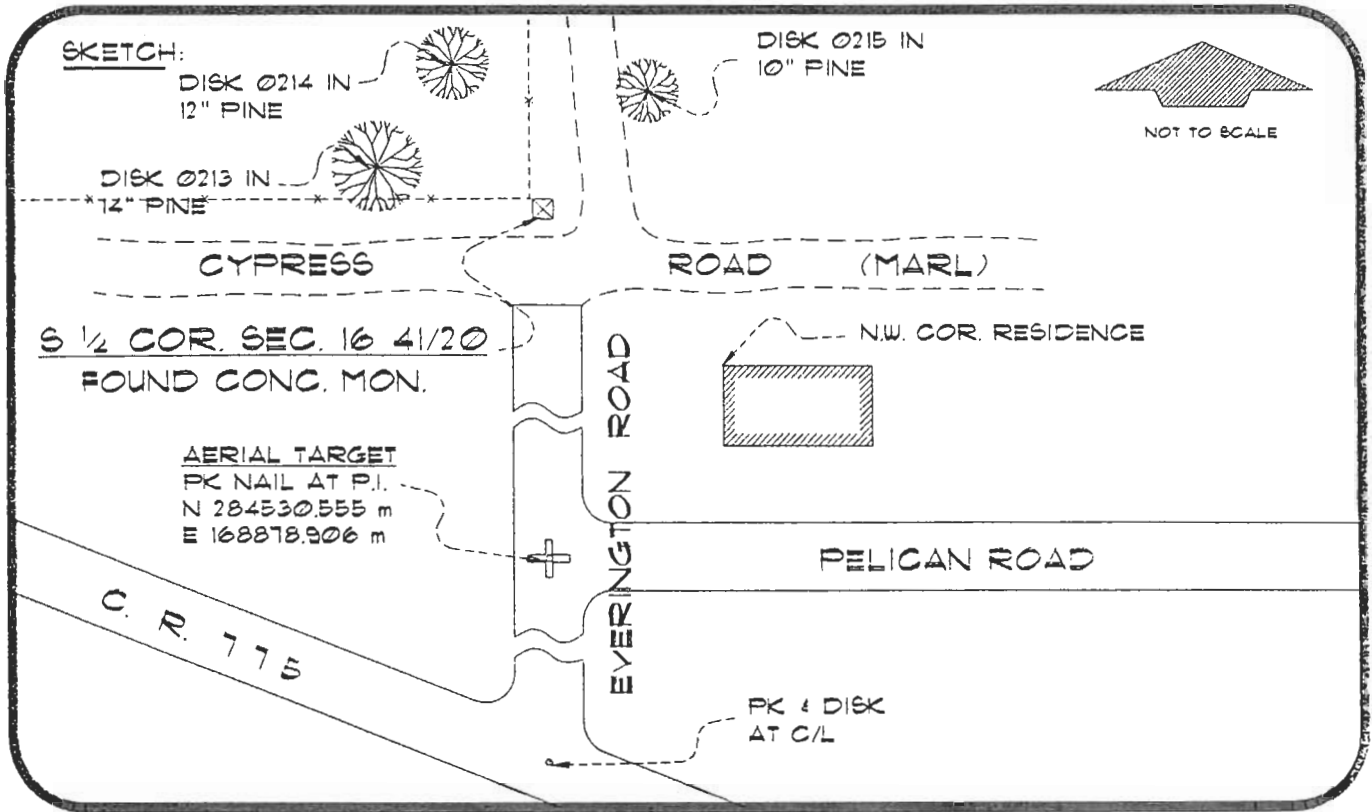
Control point(s) used for survey: CHARLOTTE COUNTY HORIZONTAL CONTROL NETWORK INCLUDES HAYOLINE 2, PLACIDA 2, W260, PUNTPORT, & FLGPS 58 AS B ORDER STATIONS.

Comments:

4120N11

DOC. #

050939



BASIS OF BEARING: SOLAR OBSERVATION REFER: FS 298/58

REFERENCE MEASUREMENTS

Description	Bearing	Distance
DISK 0213 IN 14" PINE	N 81°04'04" W	66.60'
DISK 0214 IN 12" PINE	N 32°24'09" W	73.64'
DISK 0215 IN 10" PINE	N 16°18'26" E	58.23'
N. W. COR. RESIDENCE	S 42°08'14" E	81.61'
NAIL & DISK AT C/L	S 00°06'36" E	720.89'
AERIAL TARGET	S 00°06'36" E	266.71'

SURVEYORS CERTIFICATE: I certify the monument and accessories indicated above were field located on JULY 2, 1992

*R. P. Ross*

PLS 4260

UPDATE JAN. 3, 1995

SIGNATURE

1/30/95

DATE

CHARLOTTE COUNTY SURVEY DEPT.

FIRM OR AGENCY

1000 FLORIDA STREET

ADDRESS

PUNTA GORDA FLA. 33950

CITY

STATE



511

Completeness checked by: *B. J. Jent*

Accepted and filed: 3-1-95 Date

BLM. - ID. 21CL0016 DNR USE ONLY

SEND TO:

Department of Environmental Protection  
 Bureau of Survey and Mapping  
 3900 Commonwealth Boulevard  
 Mail Station 105  
 Tallahassee, Florida 32399