

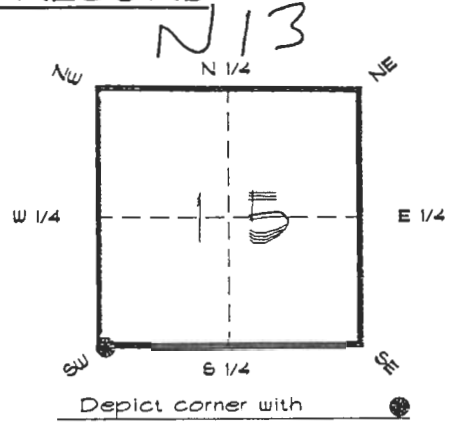
4120N13

DOC. # 111 0049891

FLORIDA DEPARTMENT OF ENVIRONMENTAL PROTECTION
CERTIFIED CORNER RECORD

CORNER DESCRIPTION:

S. W. corner of Section 15 ,
Twp 41 S. , Rge 20 E. ,
Tallahassee Base Meridian,
CHARLOTTE County(s), Florida.



MONUMENTATION DESCRIPTION:

Describe original monument and accessories, or subsequent restoration. Give sources of information. (If no attempt was made to search for the original monument and accessories, this information is not necessary.)

Description of corner evidence found:

4" SHELL MONUMENT FOUND 4/4/92 AND REPLACED WITH CONCRETE MONUMENT. POSITION OF CORNER WAS DETERMINED BY GPS OBSERVATION ON 10/9/92 REFER: CERT. COR. RECORD # 46010. FOUND DESTROYED BY CONSTRUCTION ON 9/7/94 FOUND IRON ROD 0.3' W'LY. RESET CONCRETE MONUMENT BY TIES. COORDINATES UPDATED TO NGS(GPS-560) ADJUSTMENT.

HORIZONTAL POSITION INFORMATION (if determined):

Latitude 26°54'05.37857" N Longitude 82°18'17.97649" W
Y(Northing) 284526.449 m X(Easting) 169703.271 m Zone FLW
Convergence -0°08'16.792" Scale factor 0.99995250

Coordinate determination (circle one):

Field traverse

(GPS)

Horizontal datum (circle one): NAD27 NAD83(1986) (NAD83(1990)) other (explain)

Order of accuracy as defined in Standards and Specifications for Geodetic Control Networks published by the Federal Geodetic Control Committee (circle one):

1st, 2nd, (3rd) class 1

or Minimum Technical Standards (Chapter 61G17, F.A.C.) ratio of closure for field data (example 1:10,000), _____ . This does not specify an order of accuracy.

Control point(s) used for survey: CHARLOTTE COUNTY HORIZONTAL CONTROL NETWORK INCLUDES HAVOLINE 2, FLACIDA 2, W260, PUNTPORT, & FLGPS 58 AS B ORDER STATIONS.

Comments:

RECEIVED

OCT 25 1994

SURVEY & MAPPING

RECEIVED

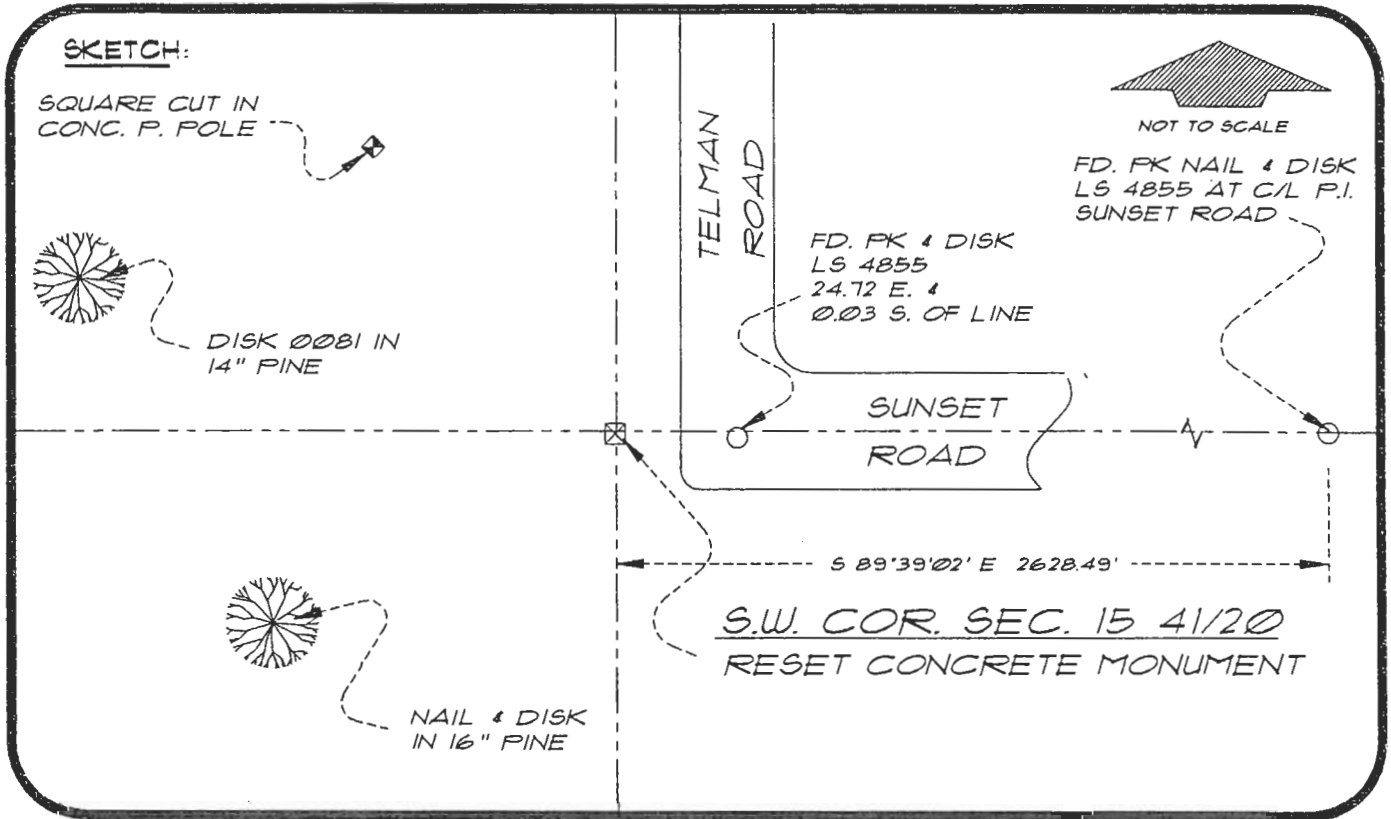
SEP 19 1994

SURVEY & MAPPING

4120N13

DOC. #

0049891



BASIS OF BEARING SOLAR OBSERVATION SET SURVEY MARKER POST 3.0' N'LY

REFER: FB 281/64

REFERENCE MEASUREMENTS

Description	Bearing	Distance
FD. NAIL & DISK IN 16" PINE	S 66°07'36" W	96.58'
SQUARE CUT IN CONC. P. POLE	N 34°57'10" W	84.83'
DISK 0081 IN 14" PINE	N 75°05'40" W	131.05'

SURVEYORS CERTIFICATE: I certify the monument and accessories indicated above were field located on SEPTEMBER 7, 1994

R. Ross PLS 4260
SIGNATURE

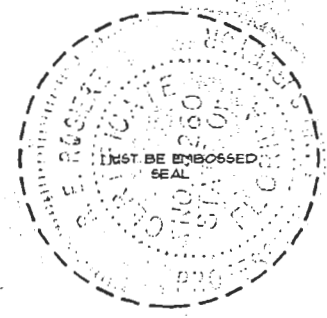
September 15, 1994
DATE

CHARLOTTE COUNTY SURVEY DEPT.
FIRM OR AGENCY

7000 FLORIDA STREET
ADDRESS

PUNTA GORDA, FLORIDA 33950
CITY STATE

511



Completeness checked by: B. Lintz

Accepted and filed: 11-1-94 Date

BLM. - ID. 21161522 DEP. USE ONLY

SEND TO:
Department of Environmental Protection
Bureau of Survey and Mapping
3900 Commonwealth Boulevard
Mail Station 105
Tallahassee, Florida 32399