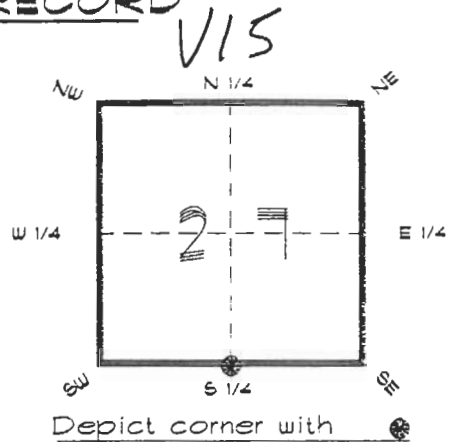


FLORIDA DEPARTMENT OF ENVIRONMENTAL PROTECTION  
CERTIFIED CORNER RECORD

CORNER DESCRIPTION:

S. 1/4 corner of Section 27,  
Twp 41 S., Rge 20 E.,  
Tallahassee Base Meridian,  
CHARLOTTE County(s), Florida.



MONUMENTATION DESCRIPTION:

Describe original monument and accessories, or subsequent restoration. Give sources of information. (If no attempt was made to search for the original monument and accessories, this information is not necessary.)

Description of corner evidence found:

5" ROUND SHELL MONUMENT WITH LEAD DISK

State method(s) to determine corner location (lost corners only):

HORIZONTAL POSITION INFORMATION ( if determined ):

Latitude 26°52'19.90392" N Longitude 82°17'49.71188" W  
Y(Northing) 281278.433 m X(Easting) 170475.574 m Zone FL. W.  
Convergence -0°08'03.515" Scale factor 0.99995193

Coordinate determination (circle one): Field traverse GPS

Horizontal datum (circle one): NAD27 NAD83(1986) NAD83(1990) other (explain)

Order of accuracy as defined in "Standards and Specifications for Geodetic Control Networks" published by the Federal Geodetic Control Committee (circle one):  
1st, 2nd, 3rd, class \_\_\_\_\_

or Minimum Technical Standards (Chapter 21HH-6, F.A.C.) ratio of closure for field data (example 1:10,000), \_\_\_\_\_ . This does not specify an order of accuracy.

Control point(s) used for survey: CHARLOTTE COUNTY HORIZONTAL CONTROL NETWORK  
INCLUDES HAYOLINE 2, PLACIDA 2, W260, PUNTPORT, & FLGPS 58 AS B ORDER STATIONS.

Comments:



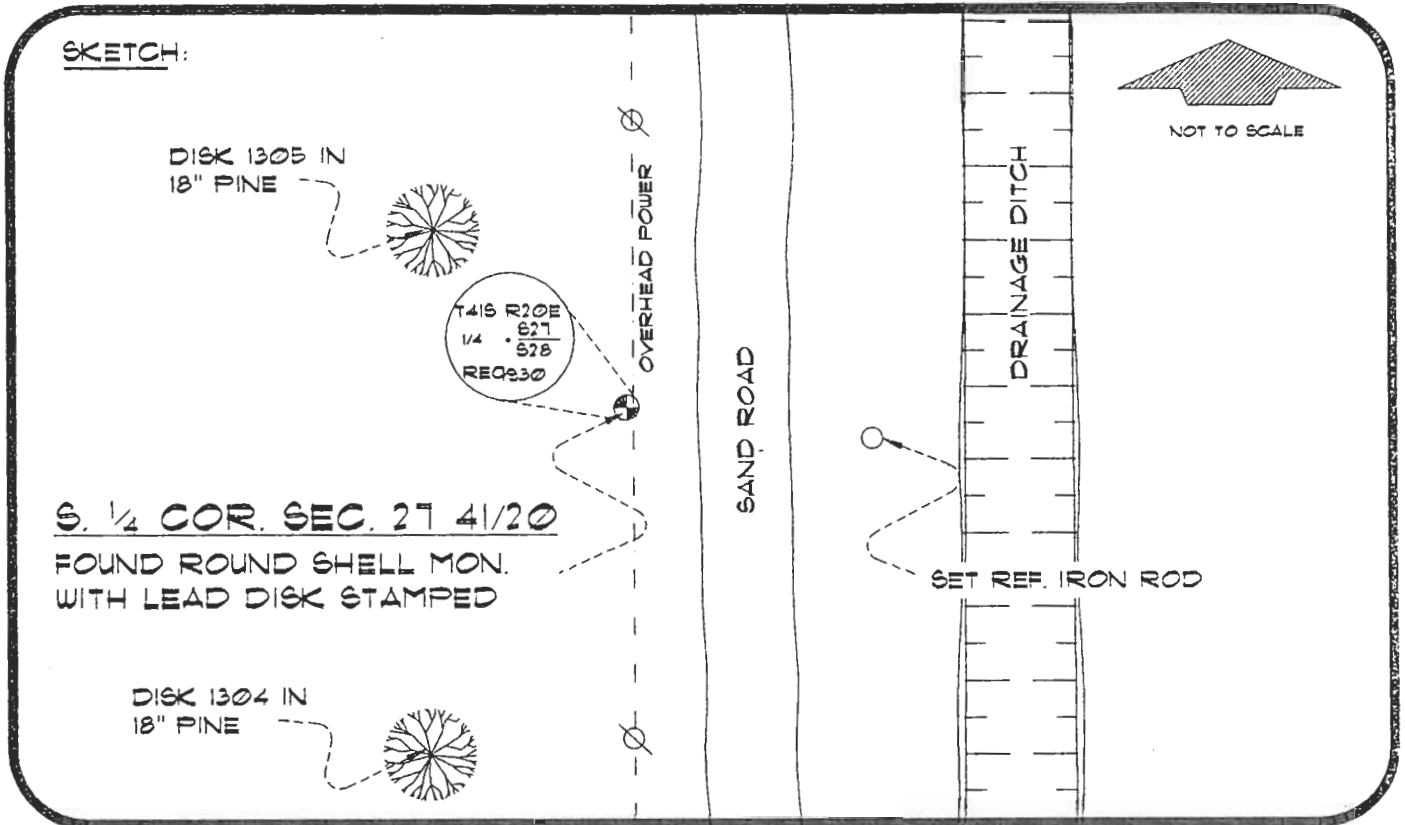
APR 14 1995

SURVEY & MAPPING

051525

4120V15

DOC. #



BASIS OF SOLAR OBSERVATION

REFER: FB 281/66

REFERENCE MEASUREMENTS

Description	Bearing	Distance
DISK 1305 IN 18" PINE	N 57°50'30" W	28.21'
SET REF. IRON ROD	S 82°40'56" E	18.10'
DISK 1304 IN 18" PINE	S 28°15'42" W	55.54'

SURVEYORS CERTIFICATE: I certify the monument and accessories indicated above were field located on MARCH 22, 1995

*R. Rose*

PLS 4260

SIGNATURE

April 11, 1995

DATE

CHARLOTTE COUNTY SURVEY DEPT.

FIRM OR AGENCY

1000 FLORIDA STREET

ADDRESS

PUNTA GORDA, FLA. 33950

CITY

STATE

475  
PLAUDA



Completeness checked by: *B. F. ...*

Accepted and filed: *3-17-95*

BLM. - ID. 34CL0027 Date \_\_\_\_\_

DEP. USE ONLY

SEND TO:

Department of Environmental Protection  
Bureau of Survey and Mapping  
3900 Commonwealth Boulevard  
Mail Station 105  
Tallahassee, Florida 32399