

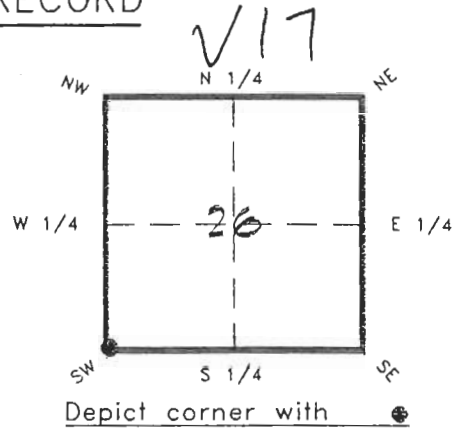
4120V17

DOC. # 050941

FLORIDA DEPARTMENT OF NATURAL RESOURCES
CERTIFIED CORNER RECORD

CORNER DESCRIPTION:

SW. corner of Section 26 ,
Twp 41 S. , Rge 20 E. ,
Tallahassee Base Meridian,
CHARLOTTE County(s), Florida.



MONUMENTATION DESCRIPTION:

Describe original monument and accessories, or subsequent restoration. Give sources of information. (If no attempt was made to search for the original monument and accessories, this information is not necessary.)

Description of corner evidence found:

4" ROUND CONCRETE MONUMENT W/ALUM. DISC. 0.3' BELOW CONCRETE IN P.V.C.

State method(s) to determine corner location (lost corners only):

HORIZONTAL POSITION INFORMATION (if determined):

Latitude 26°52'19.0920"N. Longitude 82°17'19.39884"W.

Y(Northing) 281251512(M) X(Easting) 171312.172(M) Zone FL W

Convergence -0°07'49.810" Scale factor 0.99995133

Coordinate determination (circle one): Field traverse GPS

Horizontal datum (circle one): NAD27 NAD83(1986) NAD83(1990) other (explain)

Order of accuracy as defined in "Standards and Specifications for Geodetic Control Networks" published by the Federal Geodetic Control Committee (circle one):
1st, 2nd, 3rd, class _____

or Minimum Technical Standards (Chapter 21HH-6, F.A.C.) ratio of closure for field data (example 1:10,000), _____ . This does not specify an order of accuracy.

Control point(s) used for survey:

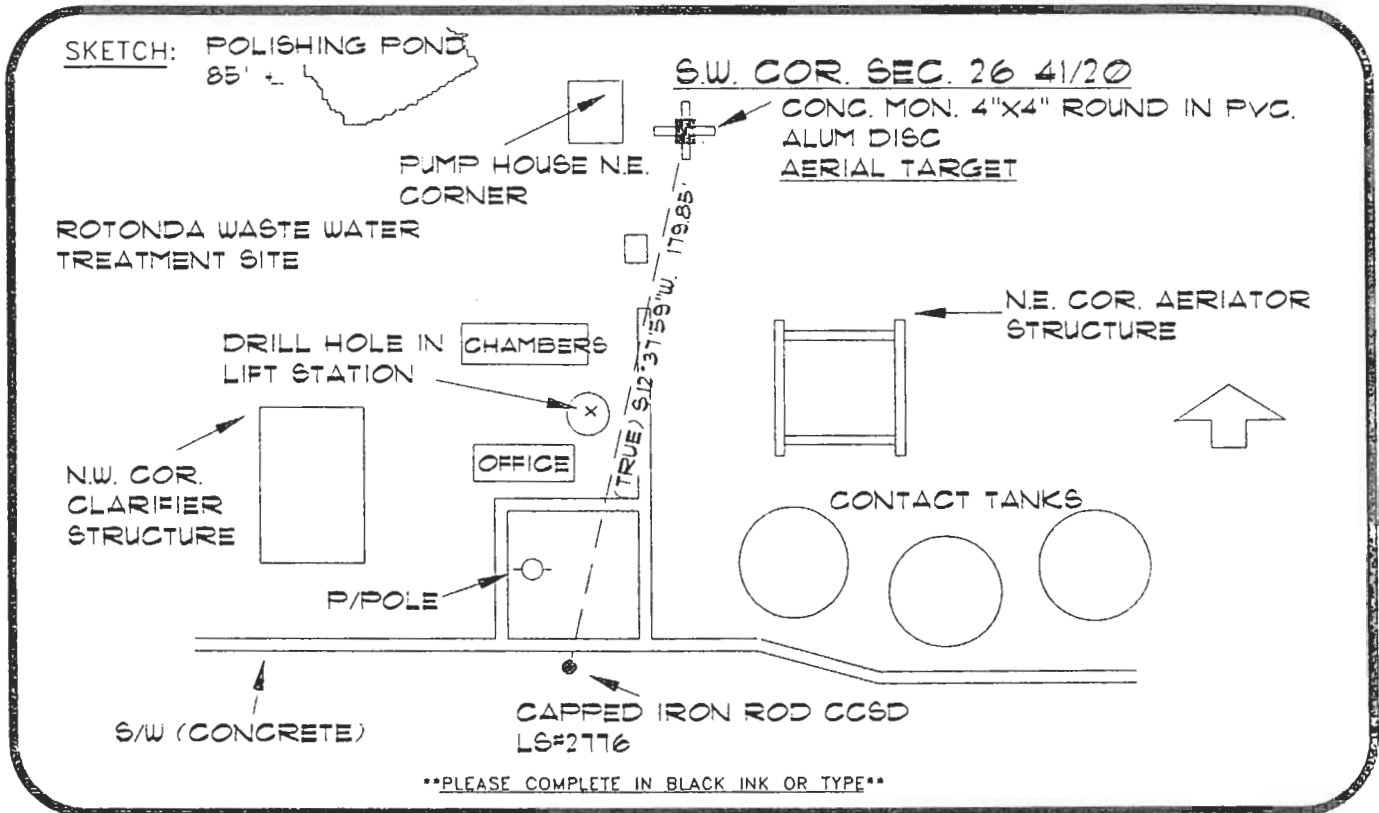
Comments:

JAN 31 1995

4120V17

DOC. #

050941



PLEASE COMPLETE IN BLACK INK OR TYPE

BASIS OF BEARING-SOLAR OBSERVATION REF: F.S. 281-56

All bearings and distances must be from the corner to the witness. Indicate whether corner was found, set, or replaced and show north arrow.

REFERENCE MEASUREMENTS (at least three vicinity references must be given below even if they appear on the above sketch):

Description	Bearing	Distance
N.E. COR. PUMP HOUSE (CB)	N.50°09'31"W.	26.51'
N.W. COR. CLARIFIER	S.57°18'59"W.	166.62'
CHISLED "X" TOP LIFT STATION	S.19°31'44"W.	98.07'
N.E. COR. AERIATOR (CB)	S.50°02'09"E.	93.57'

SURVEYORS CERTIFICATE: I certify the monument and accessories indicated above were field located on JULY 7, 19 92.

UPDATED JAN. 3, 1995

[Signature] PLS 4260

SIGNATURE

1/30/95

DATE

CHARLOTTE COUNTY SURVEY DEPT.

FIRM OF AGENCY

7000 FLORIDA STREET

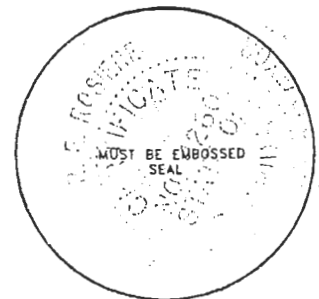
ADDRESS

PUNTA GORDA, FLA. 33950

CITY

STATE

475
PLACIDA



Completeness checked by: [Signature]
 Accepted and filed: 3-1-95 Date
 B.L.M. - I.D. 34272635 D.N.R. USE ONLY

SEND TO:

Department of Natural Resources
Bureau of Survey and Mapping
3900 Commonwealth Boulevard
Mail Station 105
Tallahassee, Florida 32399

DNR 53-001(16)
REV. 7/16/92
PAGE 2 OF 2