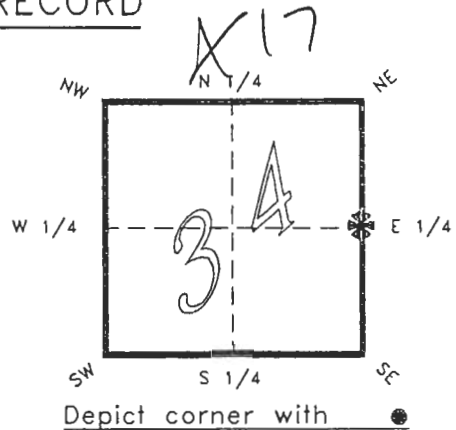


4120X17

FLORIDA DEPARTMENT OF NATURAL RESOURCES  
CERTIFIED CORNER RECORD

CORNER DESCRIPTION:

E 1/4 corner of Section 34 ,  
Twp 41 S. , Rge 20 E. ,  
Tallahassee Base Meridian,  
CHARLOTTE County(s), Florida.

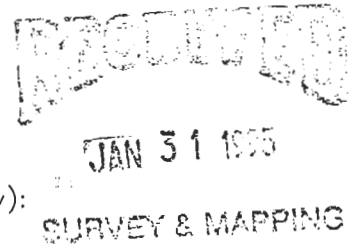


MONUMENTATION DESCRIPTION:

Describe original monument and accessories, or subsequent restoration. Give sources of information. (If no attempt was made to search for the original monument and accessories, this information is not necessary.)

Description of corner evidence found:  
5/8" IRON ROD (NO CAP)

State method(s) to determine corner location (lost corners only):



HORIZONTAL POSITION INFORMATION ( if determined ):

Latitude 26°51'52.57262"N Longitude 82°17'19.10450"W  
Y(Northing) 280435.316 X(Easting) 171318.438 Zone FL.W  
Convergence -0°07'49.558" Scale factor 0.99995133

Coordinate determination (circle one): Field traverse  GPS

Horizontal datum (circle one): NAD27 NAD83(1986)  NAD83(1990) other (explain)

Order of accuracy as defined in "Standards and Specifications for Geodetic Control Networks" published by the Federal Geodetic Control Committee (circle one):  
1st,  2nd, 3rd, class 1 ,

or Minimum Technical Standards (Chapter 21HH-6, F.A.C.) ratio of closure for field data (example 1:10,000), \_\_\_\_\_ . This does not specify an order of accuracy.

Control point(s) used for survey: CHARLOTTE COUNTY HORIZONTAL CONTROL NETWORK INCLUDES HAVOLINE 2, PLACIDA 2, W260, PUNTAPOINT, & FLGPS 58 AS B ORDER STATIONS.

Comments:

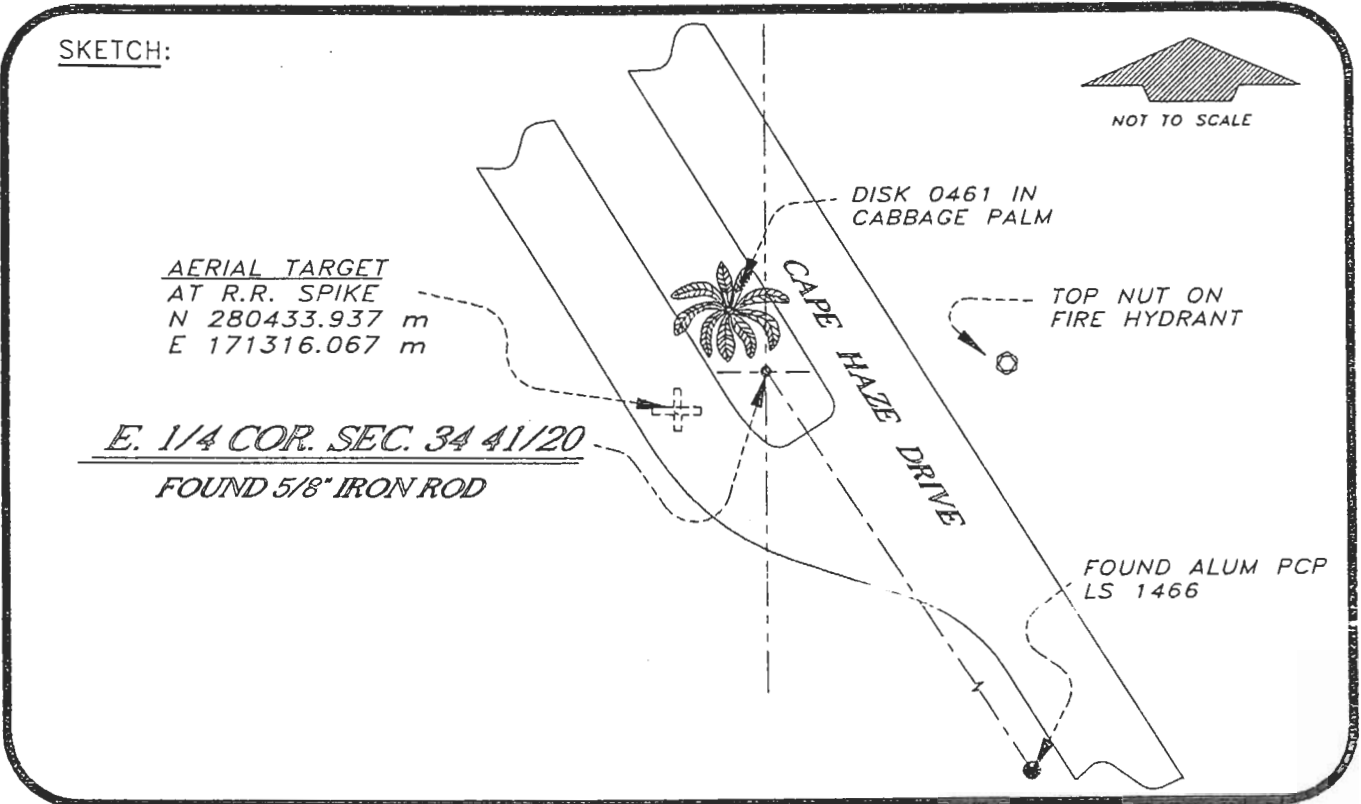
REFER: PLAT BOOK 15 PAGE 59G

4120X17

DOC. #

050943

SKETCH:



NOT TO SCALE

BASIS OF BEARING FROM PLAT DATA REFER FB 281/59

All bearings and distances must be from the corner to the witness. Indicate whether corner was found, set, or replaced and show north arrow.

SET SURVEY MARKER POST 3.0' N'LY  
REFERENCE MEASUREMENTS ( at least three vicinity references must be given below even if they appear on the above sketch ):

Description	Bearing	Distance
CIR ALUM. PCP LS 1466	S 28°52'56" E	341.40'
DISK 0461 IN CABBAGE PALM	N 29°16'04" W	9.44'
TOP NUT FIRE HYDRANT	N 88°09'26" E	39.60'
AERIAL TARGET	S 59°34'04" W	9.00'
( SOLAR OBSERVATION S 59°41'37" W )		

SURVEYORS CERTIFICATE: I certify the monument and accessories indicated above were field located on NOVEMBER 2, 19 93.

UPDATE JAN. 3. 1995

[Signature] PLS 4260  
 SIGNATURE  
1/30/95 DATE  
 CHARLOTTE COUNTY SURVEY DEPT.  
 FIRM OR AGENCY  
 7000 FLORIDA STREET  
 ADDRESS  
 PUNTA GORDA, FLA. 33950  
 CITY STATE

475



Completeness checked by: [Signature]  
 Accepted and filed: 3-1-95  
 B.L.M. - I.D. 3400CL35 Date  
 D.N.R. USE ONLY

SEND TO:  
 Department of Natural Resources  
 Bureau of Survey and Mapping  
 3900 Commonwealth Boulevard  
 Mail Station 105  
 Tallahassee, Florida 32399  
 DNR 53-001(16)  
 REV. 7/16/92  
 PAGE 2 OF 2