


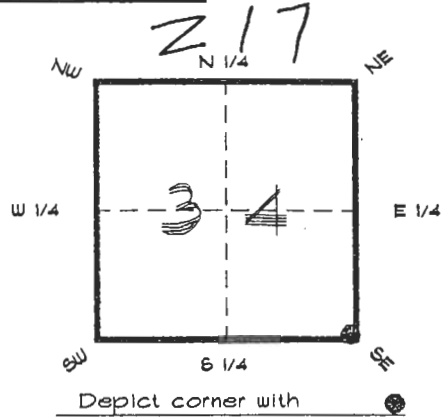
4120Z17

DOC. #  0049744

FLORIDA DEPARTMENT OF ENVIRONMENTAL PROTECTION
CERTIFIED CORNER RECORD

CORNER DESCRIPTION:

S. E. corner of Section 34,
Twp 41 S., Rge 20 E.,
Tallahassee Base Meridian,
CHARLOTTE County(s), Florida.



MONUMENTATION DESCRIPTION:

Describe original monument and accessories, or subsequent restoration. Give sources of information. (If no attempt was made to search for the original monument and accessories, this information is not necessary.)

Description of corner evidence found:

R.R. SPIKE ON SURFACE, 3" ROUND SHELL CONCRETE MONUMENT WITH LEAD PLUG "REC 1930" BELOW, REPLACED WITH CONCRETE MONUMENT IN ACCESS WELL.

State method(s) to determine corner location (lost corners only):

HORIZONTAL POSITION INFORMATION (if determined):

Latitude 26°51'26.05189" N Longitude 82°17'18.80323" W
Y(Northing) 279619.080 m X(Easting) 171324.896 m Zone FLW
Convergence -0°07'49.302" Scale factor 0.99995132

Coordinate determination (circle one): Field traverse GPS

Horizontal datum (circle one): NAD27 NAD83(1986) NAD83(1990) other (explain)

Order of accuracy as defined in Standards and Specifications for Geodetic Control Networks published by the Federal Geodetic Control Committee (circle one): 1st, 2nd, 3rd, class _____

or Minimum Technical Standards (Chapter 6IG17, F.A.C.) ratio of closure for field data (example 1:10,000), _____. This does not specify an order of accuracy.

Control point(s) used for survey: *CHARLOTTE COUNTY HORIZONTAL CONTROL NETWORK INCLUDES HAVOLINE 2, PLACIDA 2, W260, PUNTPORT, 4 FLGPS 58 AS B ORDER STATIONS.*

Comments:

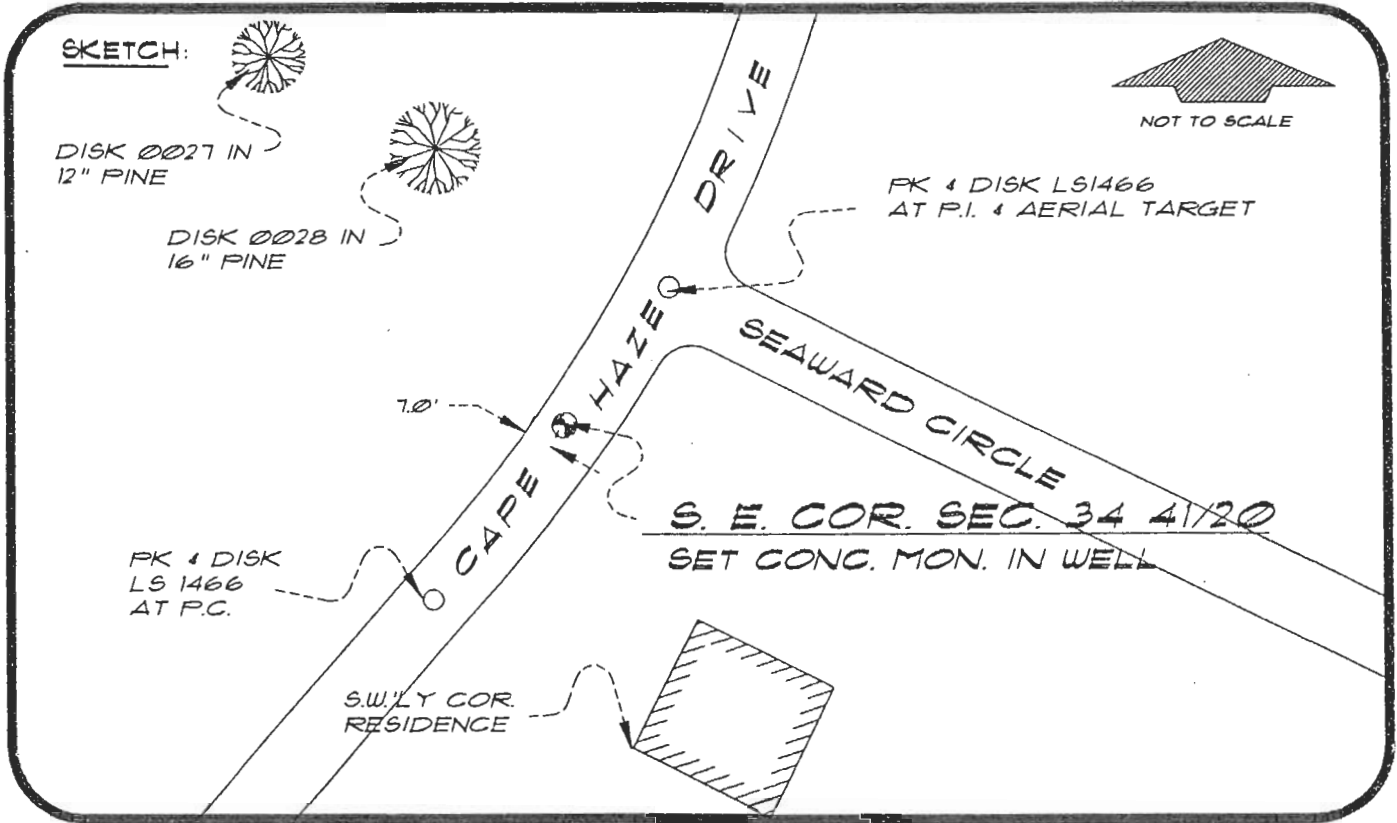
RECEIVED

SEP 12 1994

0049744

4120Z17

DOC. #



BASIS OF BEARING SOLAR OBSERVATION REFER: FB 281/09

REFERENCE MEASUREMENTS

Description	Bearing	Distance
DISK LS 1466 AT P.C.	S 31°40'35" W	60.29'
DISK LS 1466 AT P.I.	N 28°23'40" E	42.35'
DISK 0027 IN 12" PINE	N 24°51'57" W	163.00'
DISK 0028 IN 16" PINE	N 14°11'30" W	126.89'
S.W.'LY COR. RESIDENCE	S 08°17'35" E	98.96'

SURVEYORS CERTIFICATE: I certify the monument and accessories indicated above were field located on MARCH 27, 1994.

R. P. ROSS

PLS 4260

SIGNATURE

September 7, 1994

DATE

CHARLOTTE COUNTY SURVEY DEPT.

FIRM OR AGENCY

7000 FLORIDA STREET

ADDRESS

PUNTA GORDA, FLORIDA 33950

CITY

STATE

475



Completeness checked by: B. J. [Signature]

Accepted and filed: 10-3-1994 Date

BLM. - ID. 03343502 D.E.P. USE ONLY

SEND TO:

Department of Environmental Protection
Bureau of Survey and Mapping
3900 Commonwealth Boulevard
Mail Station 105
Tallahassee, Florida 32399