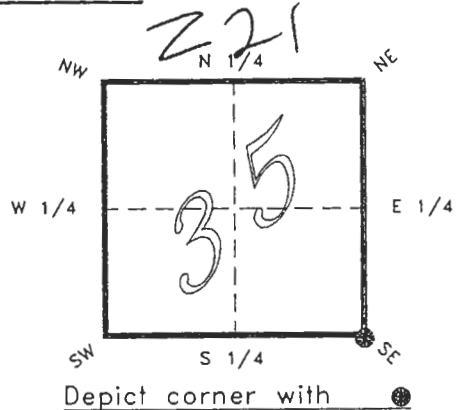


4120Z21

FLORIDA DEPARTMENT OF ENVIRONMENTAL PROTECTION
CERTIFIED CORNER RECORD

CORNER DESCRIPTION:

S.E. corner of Section 35,
Twp 41 S., Rge 20 E.,
Tallahassee Base Meridian,
CHARLOTTE County(s), Florida.



MONUMENTATION DESCRIPTION:

Describe original monument and accessories, or subsequent restoration. Give sources of information. (If no attempt was made to search for the original monument and accessories, this information is not necessary.)

Description of corner evidence found:

ROUND CONCRETE MONUMENT (SHELL) WITH LEAD DISK
STAMPED WITH SECTIONS, TWP. & RGE. DATED 1930 JAN 31 1995

State method(s) to determine corner location (lost corners only):

RECEIVED

SURVEY & MAPPING

HORIZONTAL POSITION INFORMATION (if determined):

Latitude 26°51'26.32899" N Longitude 82°16'20.05821" W
Y(Northing) 279624.023 m X(Easting) 172946.519 m Zone FLW
Convergence -0°07'22.764" Scale factor 0.99995021

Coordinate determination (circle one): Field traverse GPS

Horizontal datum (circle one): NAD27 NAD83(1986) NAD83(1990) other (explain)

Order of accuracy as defined in "Standards and Specifications for Geodetic Control Networks" published by the Federal Geodetic Control Committee (circle one):
1st, 2nd, 3rd, class 1

or Minimum Technical Standards (Chapter 21HH-6, F.A.C.) ratio of closure for field data (example 1:10,000), . This does not specify an order of accuracy.

Control point(s) used for survey: CHARLOTTE COUNTY HORIZONTAL CONTROL NETWORK INCLUDES HAVOLINE 2, PLACIDA 2, W260, PUNTAPOINT, & FLGPS 58 AS B ORDER STATIONS.

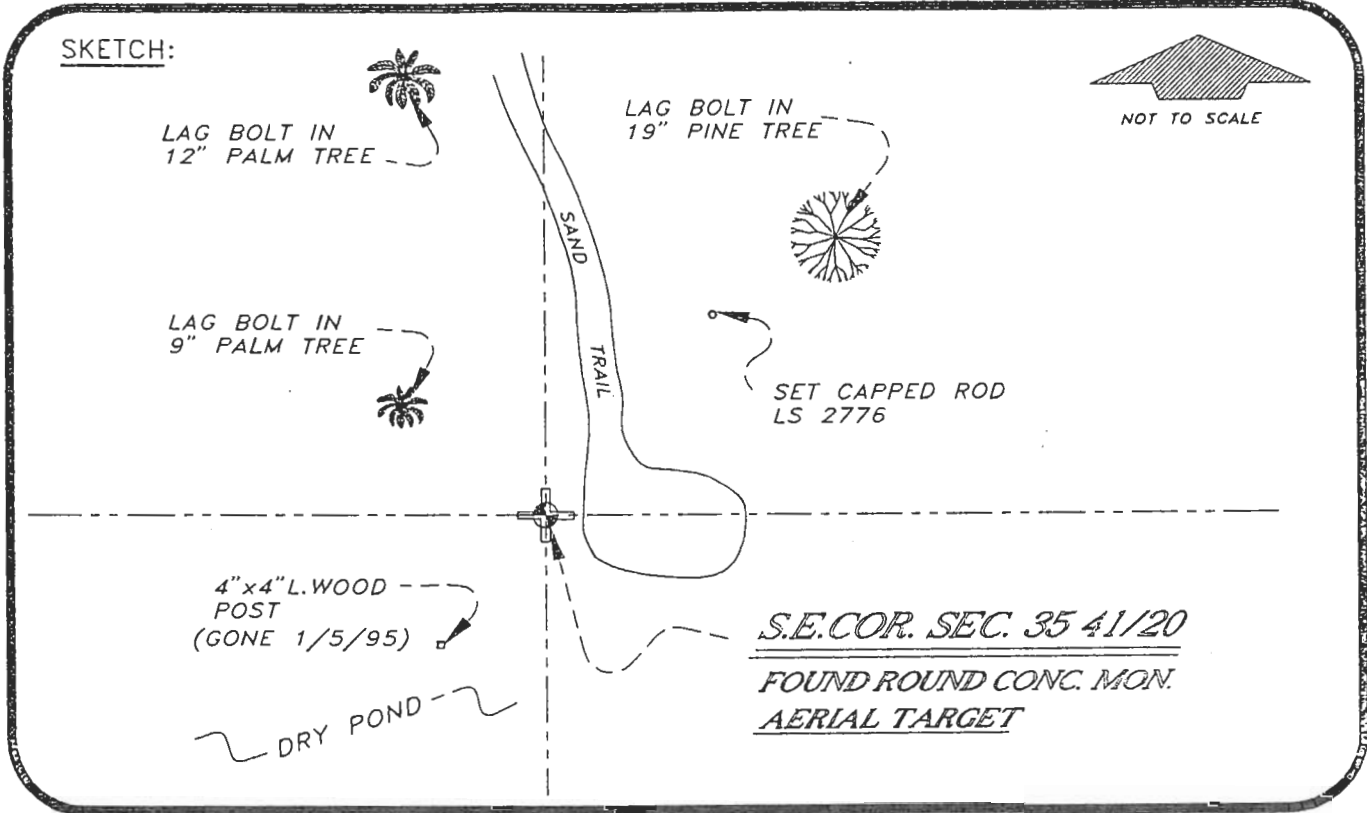
Comments:

050944

4120Z21

DOC. #

SKETCH:



BASIS OF BEARING SOLAR OBSERVATION REFER: FB 281/37
 SET SURVEY MARKER POSTS N'LY & E'LY 3.0'

REFERENCE MEASUREMENTS

Description	Bearing	Distance
LAG BOLT IN 12" PALM TREE	N 11°43'34" W	283.97'
LAG BOLT IN 9" PALM TREE	N 53°40'12" W	59.34'
LAG BOLT IN 19' PINE TREE	N 47°21'29" E	215.35'
4"x4" L.WOOD POST	S 31°52'16" W	66.74'
CAPPED ROD LS 2776	N 41°37'06" E	142.55'

SURVEYORS CERTIFICATE: I certify the monument and accessories indicated above were field located on JUNE 3, 19 92.

R. Rose
 SIGNATURE

PLS 4260

UPDATED JAN. 5, 1995

1/30/95

DATE

CHARLOTTE COUNTY SURVEY DEPT.

FIRM OR AGENCY

7000 FLORIDA STREET

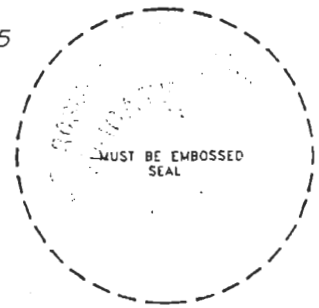
ADDRESS

PUNTA GORDA, FLA. 33950

CITY

STATE

475



Completeness checked by: *B. Smith*
 Accepted and filed: 3-1-95
 B.L.M. - I.D. 02353601 Date
 D.N.R. USE ONLY

SEND TO:

Department of Environmental Protection
 Bureau of Survey and Mapping
 3900 Commonwealth Boulevard
 Mail Station 105
 Tallahassee, Florida 32399