

4121A13

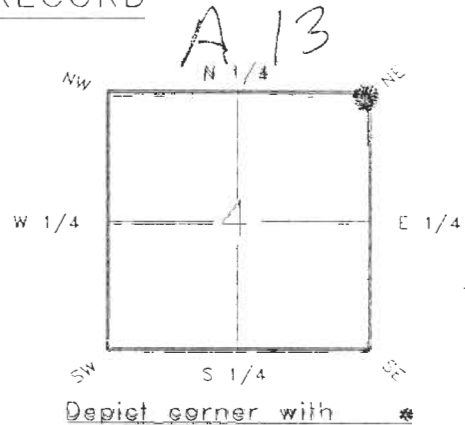
DOC. #

0046989

FLORIDA DEPARTMENT OF NATURAL RESOURCES  
CERTIFIED CORNER RECORD

CORNER DESCRIPTION:

NE corner of Section 4,  
Twp 41 S, Rge 21 E,  
Tallahassee Base Meridian,  
CHARLOTTE County(s), Florida.



MONUMENTATION DESCRIPTION:

Describe original monument and accessories, or subsequent restoration. Give sources of information. (If no attempt was made to search for the original monument and accessories, this information is not necessary.)

3"X 3" LIGHTERWOOD POST, REPLACED WITH CHARLOTTE COUNTY SURVEY DEPT.  
4"X 4" CONCRETE MONUMENT (APPROPRIATE SEC.N.'S. STAMPED)

Description of corner evidence found:

State method(s) to determine corner location (lost corners only):

HORIZONTAL POSITION INFORMATION ( if determined ):

Latitude 26°56'42.54313" N Longitude 82°12'24.34630" W

Y(Northing) 289343.742 m X(Easting) 179469.009 m Zone FLW

Convergence -0°05'37.292" Scale factor 0.99994638

Coordinate determination (circle one): Field traverse  GPS

Horizontal datum (circle one): NAD27  NAD83(1986)  NAD83(1990)  other (explain)

Order of accuracy as defined in "Standards and Specifications for Geodetic Control Networks" published by the Federal Geodetic Control Committee (circle one):  
1st,  2nd,  3rd, class 1

or Minimum Technical Standards (Chapter 21HH-6, F.A.C.) ratio of closure for field data (example 1:10,000), \_\_\_\_\_ . This does not specify an order of accuracy.

Control point(s) used for survey:

Comments:

REFER: D.N.R. CERTIFIED CORNER RECORD #0033341

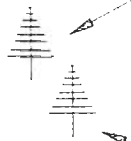
0048889

4121A13

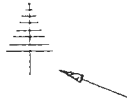
DOC. #

SKETCH:

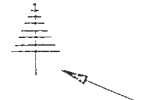
P.K. NAIL IN 8' PINE STUMP



P.K. NAIL IN 10' PINE STUMP



P.K. NAIL IN 6' PINE STUMP



MANGROVE AREA

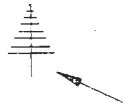


N.E. CORNER SECTION 4

41/21

4" X 4" CHARLOTTE COUNTY SURVEY DEPARTMENT CONCRETE MONUMENT

2 1/4" IRON PIPE



P.K. NAIL IN 16' PINE STUMP



\*\*PLEASE COMPLETE IN BLACK INK OR TYPE\*\*

BASIS OF BEARING-SOLAR OBSERVATION REFER: F.B. 274-24  
All bearings and distances must be from the corner to the witness. Indicate whether corner was found, set, or replaced and show north arrow.

SET SURVEY MARKER POST 3.0' LY

REFERENCE MEASUREMENTS ( at least three vicinity references must be given below even if they appear on the above sketch ):

Description	Bearing	Distance
FND. P.K. NAIL IN TOP 8' PINE STUMP	N.30°04'49"W.	71.98'
SET P.K. NAIL IN TOP 10" PINE STUMP	N.26°58'52"W.	49.97'
FND. P.K. NAIL IN TOP 6" PINE STUMP	N.66°17'38"E.	91.91'
SET P.K. NAIL IN TOP 16" PINE STUMP	S.19°58'58"W.	59.26'
FND. 2 1/4" IRON PIPE	S.11°28'06"W.	5.85'

SURVEYORS CERTIFICATE: I certify the monument and accessories indicated above were field located on May 19, 19 93.

[Signature] PLS 4260  
SIGNATURE

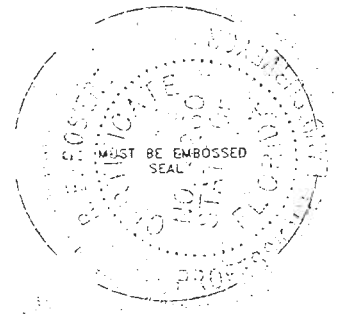
10/27/93  
DATE

CHARLOTTE COUNTY SURVEY DEPT.  
FIRM OR AGENCY

7000 FLORIDA STREET  
ADDRESS

PUNTA GORDA, FLA. 33950  
CITY STATE

510



Completeness checked by: B. Linton  
 Accepted and filed: 12-1-93 Date  
 B.L.M. - I.D. 04333403 D.N.R. USE ONLY

SEND TO:

Department of Natural Resources  
Bureau of Survey and Mapping  
3900 Commonwealth Boulevard  
Mail Station 105  
Tallahassee, Florida 32399

DNR 53-001(16)  
REV. 7/16/92  
PAGE 2 OF 2