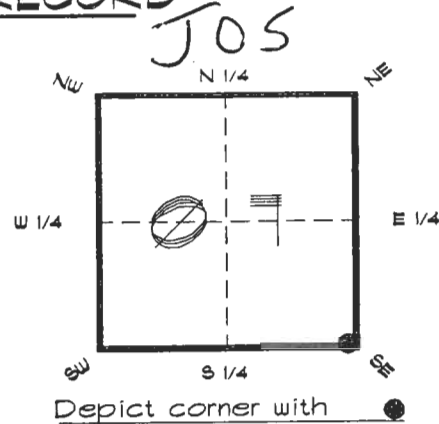


FLORIDA DEPARTMENT OF ENVIRONMENTAL PROTECTION
CERTIFIED CORNER RECORD

CORNER DESCRIPTION:

S. E. corner of Section 07 ,
Twp 41 S. , Rge 21 E. ,
Tallahassee Base Meridian,
CHARLOTTE County(s), Florida.



MONUMENTATION DESCRIPTION:

Describe original monument and accessories, or subsequent restoration. Give sources of information. (If no attempt was made to search for the original monument and accessories, this information is not necessary.)

Description of corner evidence found:

1 1/2" IRON PIPE ON SURFACE

State method(s) to determine corner location (lost corners only):

HORIZONTAL POSITION INFORMATION (if determined):

Latitude 26°54'57.30929" N Longitude 82°14'21.76924" W

Y(Northing) 286110.696 m X(Easting) 176224.042 m Zone FL. W.

Convergence -0°06'30.110" Scale factor 0.99994815

Coordinate determination (circle one): Field traverse GPS

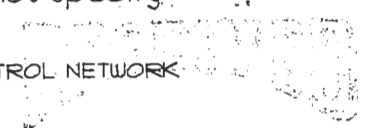
Horizontal datum (circle one): NAD27 NAD83(1986) NAD83(1990) other (explain)

Order of accuracy as defined in "Standards and Specifications for Geodetic Control Networks" published by the Federal Geodetic Control Committee (circle one):
1st, 2nd, 3rd class _____

or Minimum Technical Standards (Chapter 21HH-6, F.A.C.) ratio of closure for field data (example 1:10,000), _____, This does not specify an order of accuracy.

Control point(s) used for survey: CHARLOTTE COUNTY HORIZONTAL CONTROL NETWORK INCLUDES HAYOLINE 2, PLACIDA 2, W260, PUNTPORT, 4 FLGPS 58 AS B ORDER STATIONS.

Comments:



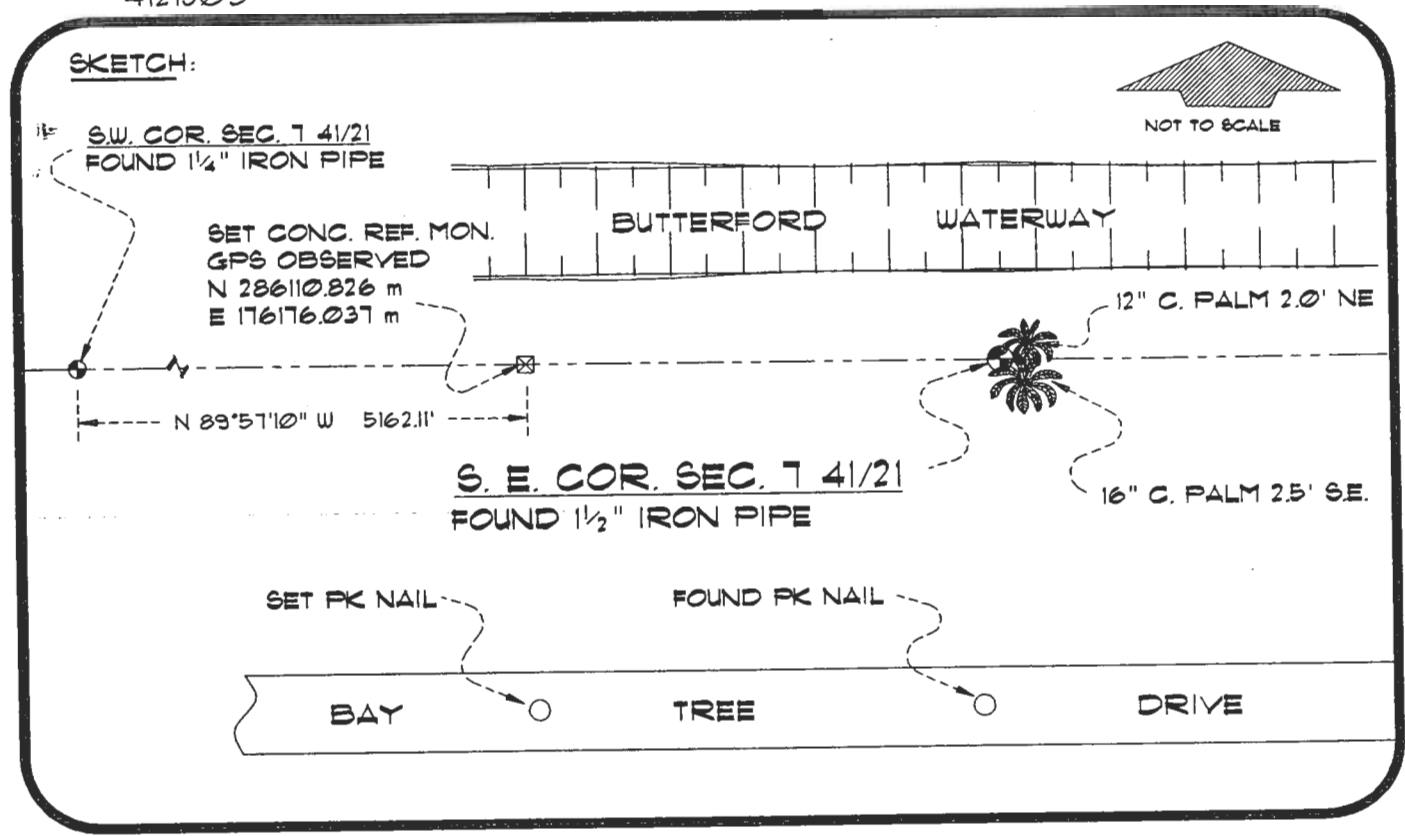
DEC 27 1994

SURVEY & MAPPING

0050495

4121J05

DOC. #



BASIS OF BEARING GPS OBSERVATION
SET SURVEY MARKER POST 1.4' N'LY
REFERENCE MEASUREMENTS

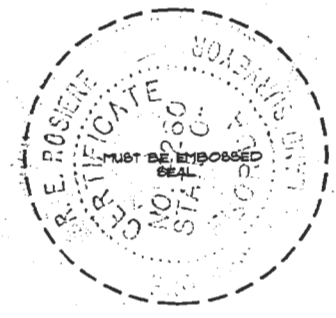
REFER: FB 284/22
 FB 274/05

Description	Bearing	Distance
FOUND FK NAIL	S 02°53'10" W	154.98'
SET FK NAIL	S 45°33'00" W	220.82'
SET REF. CONC. MON.	N 89°57'10" W	157.51'

SURVEYORS CERTIFICATE: I certify the monument and accessories indicated above were field located on SEPTEMBER 29, 1994

R. Rose PLS 4260
 SIGNATURE
December 29, 1994
 DATE
 CHARLOTTE COUNTY SURVEY DEPT.
 FIRM OR AGENCY
 1000 FLORIDA STREET
 ADDRESS
 PUNTA GORDA, FLA. 33950
 CITY STATE

510



Completeness checked by: B. Lante
 Accepted and filed: 01-25 Date
 BLM. - ID. 18070817 DNR. USE ONLY

SEND TO:
 Department of Environmental Protection
 Bureau of Survey and Mapping
 3900 Commonwealth Boulevard
 Mail Station 105
 Tallahassee, Florida 32399