

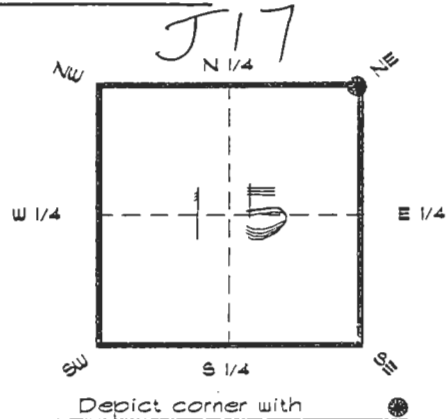


4121J17

FLORIDA DEPARTMENT OF ENVIRONMENTAL PROTECTION
CERTIFIED CORNER RECORD

CORNER DESCRIPTION:

N.E. corner of Section 15 ,
Twp 41 S. , Rge 21 E. ,
Tallahassee Base Meridian,
CHARLOTTE County(s), Florida.



MONUMENTATION DESCRIPTION:

Describe original monument and accessories, or subsequent restoration. Give sources of information. (If no attempt was made to search for the original monument and accessories, this information is not necessary.)

Description of corner evidence found:

SHELL CONCRETE MONUMENT IN DECOMPOSED CONDITION AND L'WOOD POST Ø.7' E'LY, REPLACED WITH CONCRETE MONUMENT.

State method(s) to determine corner location (lost corners only):

HORIZONTAL POSITION INFORMATION (if determined):

Latitude 26°54'58.10959" N Longitude 82°11.26.863" W
Y(Northing) 286127.100 m X(Easting) 181066.377 m Zone FLW
Convergence -0°05'10.661" Scale factor 0.99994560

Coordinate determination (circle one): Field traverse GPS

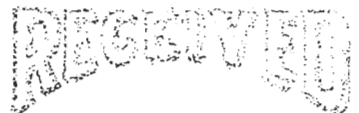
Horizontal datum (circle one): NAD27 NAD83(1986) NAD83(1990) other (explain)

Order of accuracy as defined in Standards and Specifications for Geodetic Control Networks published by the Federal Geodetic Control Committee (circle one):
1st, 2nd, 3rd, class _____

or Minimum Technical Standards (Chapter 6IG17, F.A.C.) ratio of closure for field data (example 1:10,000), _____ . This does not specify an order of accuracy.

Control point(s) used for survey: CHARLOTTE COUNTY HORIZONTAL CONTROL NETWORK INCLUDES HAVOLINE 2, FLACIDA 2, W260, PUNTPORT, & FLGPS 58 AS B ORDER STATIONS.

Comments:

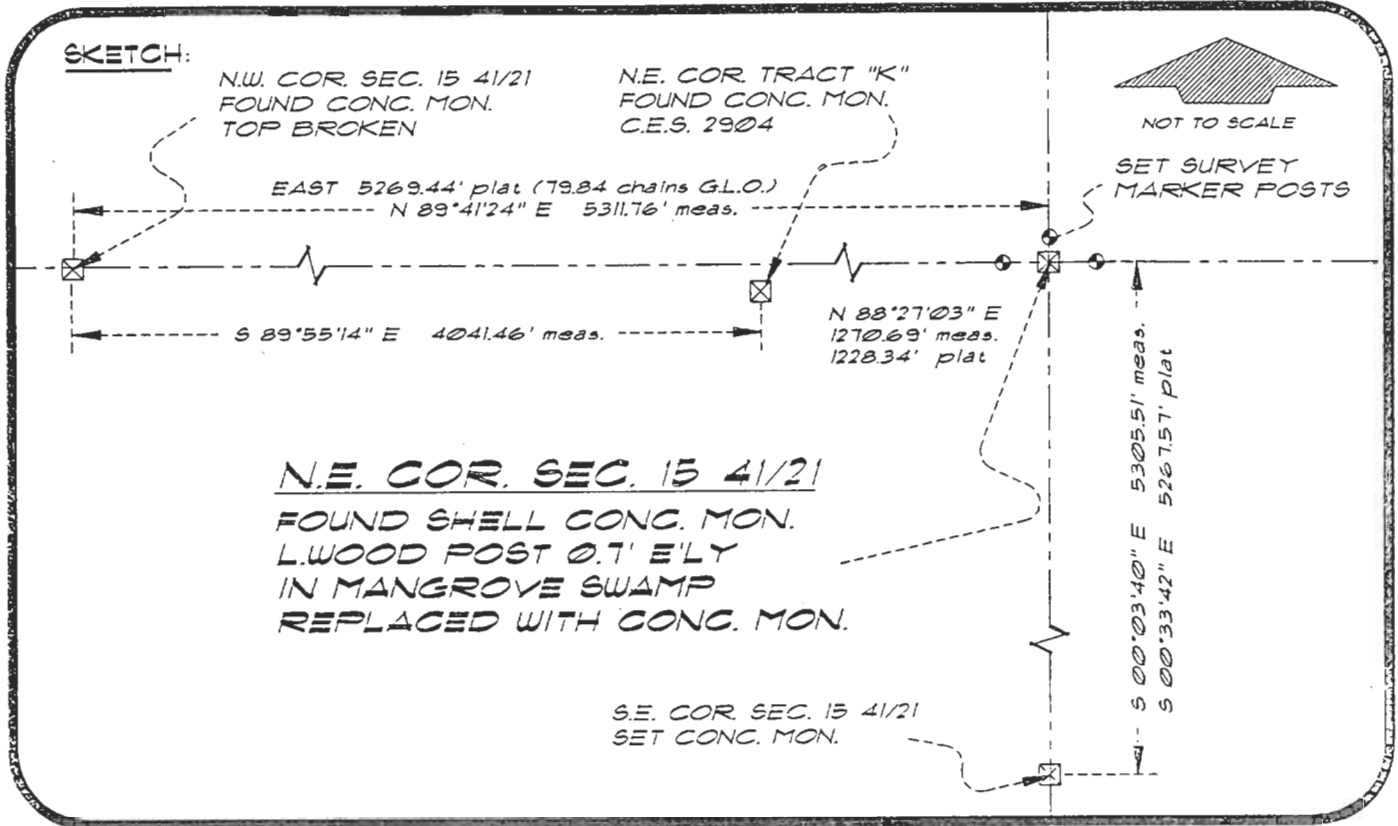


JUN 23 1001

4121J17

DOC. #

0048817



BASIS OF BEARING GPS OBSERVATION REFER: FB 274/19
plat REFERS TO FORT CHARLOTE SUBDIVISION, SEC. 23
PLAT BOOK 9 PAGE 21

REFERENCE MEASUREMENTS

Description	Bearing	Distance
SET SURVEY MARKER POST	NORTH (mag)	5.0'
SET SURVEY MARKER POST	WEST (mag)	10.0'
SET SURVEY MARKER POST	EAST (mag)	10.0'

SURVEYORS CERTIFICATE: I certify the monument and accessories indicated above were field located on DECEMBER 16, 1992

R. P. ROSS PLS 4260
SIGNATURE

June 21, 1994
DATE

CHARLOTTE COUNTY SURVEY DEPT.
FIRM OR AGENCY

1000 FLORIDA STREET
ADDRESS

PUNTA GORDA, FLORIDA 33950
CITY STATE

510



Completeness checked by: B. Hinton

Accepted and filed: 7-1-94 Date

BLM. - ID. 15101114 D.E.P. USE ONLY

SEND TO:

Department of Environmental Protection
Bureau of Survey and Mapping
3900 Commonwealth Boulevard
Mail Station 105
Tallahassee, Florida 32399