

4121N09 2-2000

DOC. #

059841

FLORIDA DEPARTMENT OF ENVIRONMENTAL PROTECTION
CERTIFIED CORNER RECORD

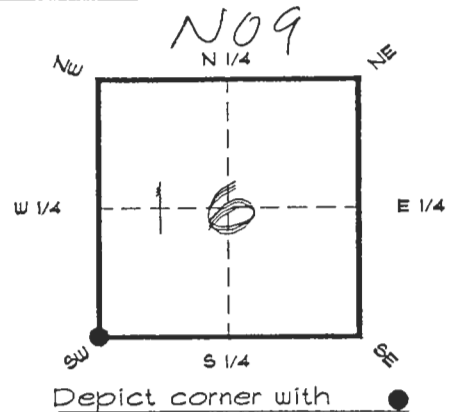
CORNER DESCRIPTION:

S.W. corner of Section 16

Twp 41 S., Rge 21 E.

Tallahassee Base Meridian,

CHARLOTTE County(s), Florida.



MONUMENTATION DESCRIPTION:

Describe original monument and accessories, or subsequent restoration. Give sources of information. (If no attempt was made to search for the original monument and accessories, this information is not necessary.)

Description of corner evidence found:

SET CONCRETE MONUMENT BY PROPORTION. FOUND CONCRETE BROKEN AND HORIZONTAL FROM WHICH POSITION COULD NOT BE DETERMINED.

State method(s) to determine corner location (lost corners only):

HORIZONTAL POSITION INFORMATION (if determined):

Latitude 26°54'04.78804" N Longitude 82°13'23.19640" W

Y(Northing) 284491.313 m X(Easting) 177837.206 m Zone FLW.

Convergence -0°06'03.412" Scale factor 0.99994724

Coordinate determination (circle one): Field traverse . GPS

Horizontal datum (circle one): NAD27 NAD83(1986) NAD83(1990) other (explain)

Order of accuracy as defined in 'Standards and Specifications for Geodetic Control Networks' published by the Federal Geodetic Control Committee (circle one):

1st, 2nd, 3rd class 1

or Minimum Technical Standards (Chapter 21HH-6, F.A.C.) ratio of closure for field data (example 1:10,000), . This does not specify an order of accuracy.

Control point(s) used for survey: CHARLOTTE COUNTY HORIZONTAL CONTROL NETWORK INCLUDES HAYOLINE 2, PLACIDA 2, W260, FUNTPORT, 4 FLGPS 58 AS B ORDER STATIONS.

Comments:

RECEIVED

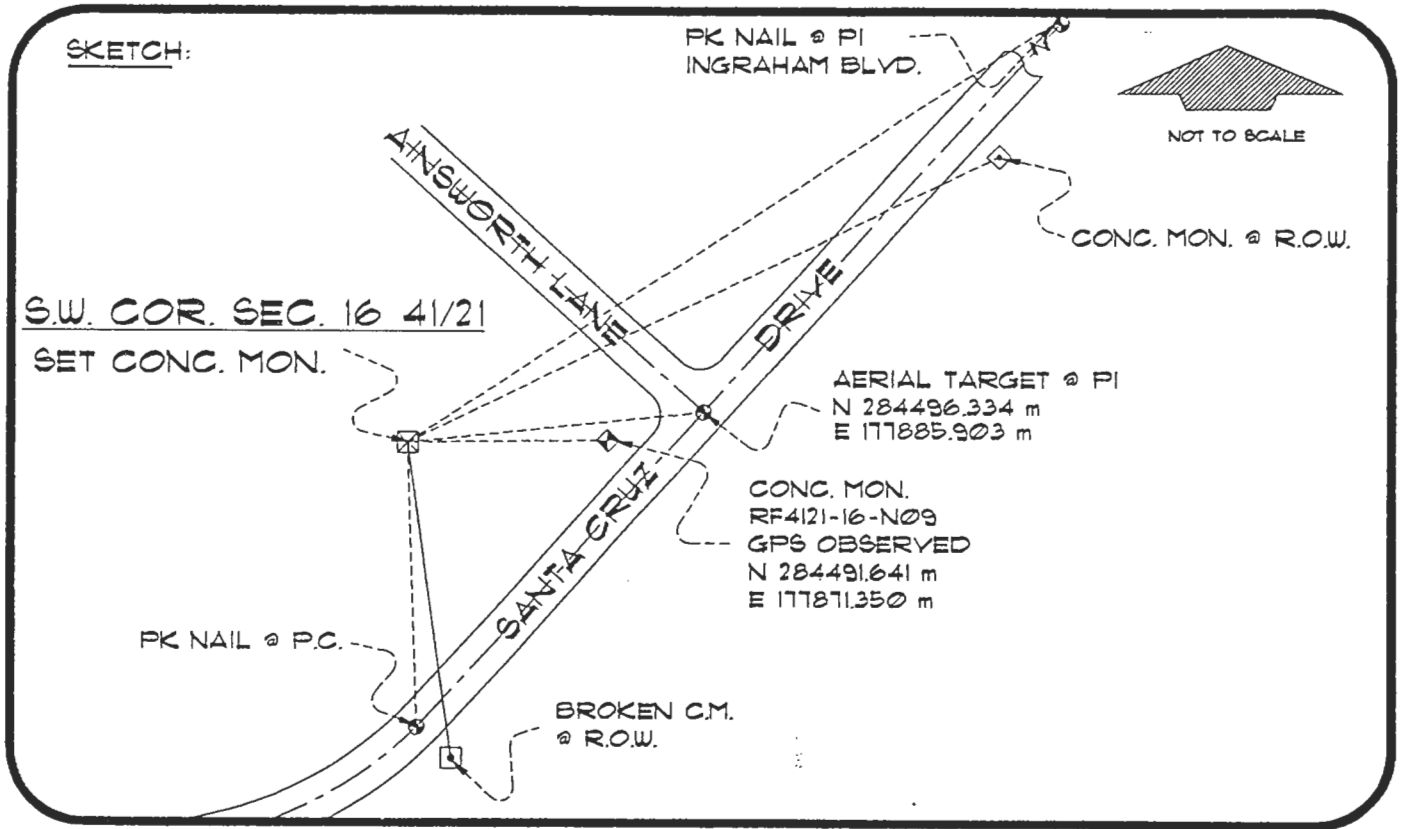
JUN 3 1997

SURVEY & MAPPING

059841

4121N09

DOC. #



BASIS OF BEARING SOLAR OBSERVATION REFER: FB 274/58

REFERENCE MEASUREMENTS

Description	Bearing	Distance
PK NAIL @ AERIAL TARGET	N 84°00'46" E	160.63'
PK NAIL @ P.C.	S 01°50'27" E	154.65'
BROKEN C.M. @ R.O.W.	S 07°49'38" E	172.93'
CONC. MON. @ R.O.W.	N 63°58'33" E	354.94'
PK NAIL @ PI INGRAHAM	N 55°23'08" E	466.91'
RF 4121-16-N09	N 89°20'55" E	112.04'

SURVEYORS CERTIFICATE: I certify the monument and accessories indicated above were field located on NOVEMBER 18, 1996

R. Rose

PLS 4260

SIGNATURE

DECEMBER 9, 1996

DATE

CHARLOTTE COUNTY SURVEY DEPT.

FIRM OR AGENCY

1000 FLORIDA STREET

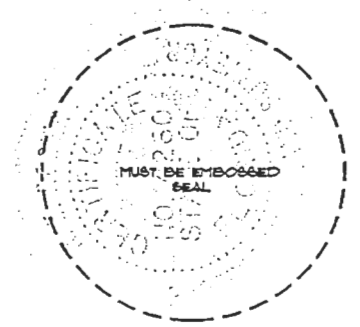
ADDRESS

PUNTA GORDA, FLA. 33950

CITY

STATE

510
EL JOBEAN



Completeness checked by: *[Signature]*

Accepted and filed: 7-1-97 Date

BLM. - ID. 20171621 D.E.P. USE ONLY

SEND TO:

Department of Environmental Protection
Bureau of Survey and Mapping
3900 Commonwealth Boulevard
Mail Station 105
Tallahassee, Florida 32399